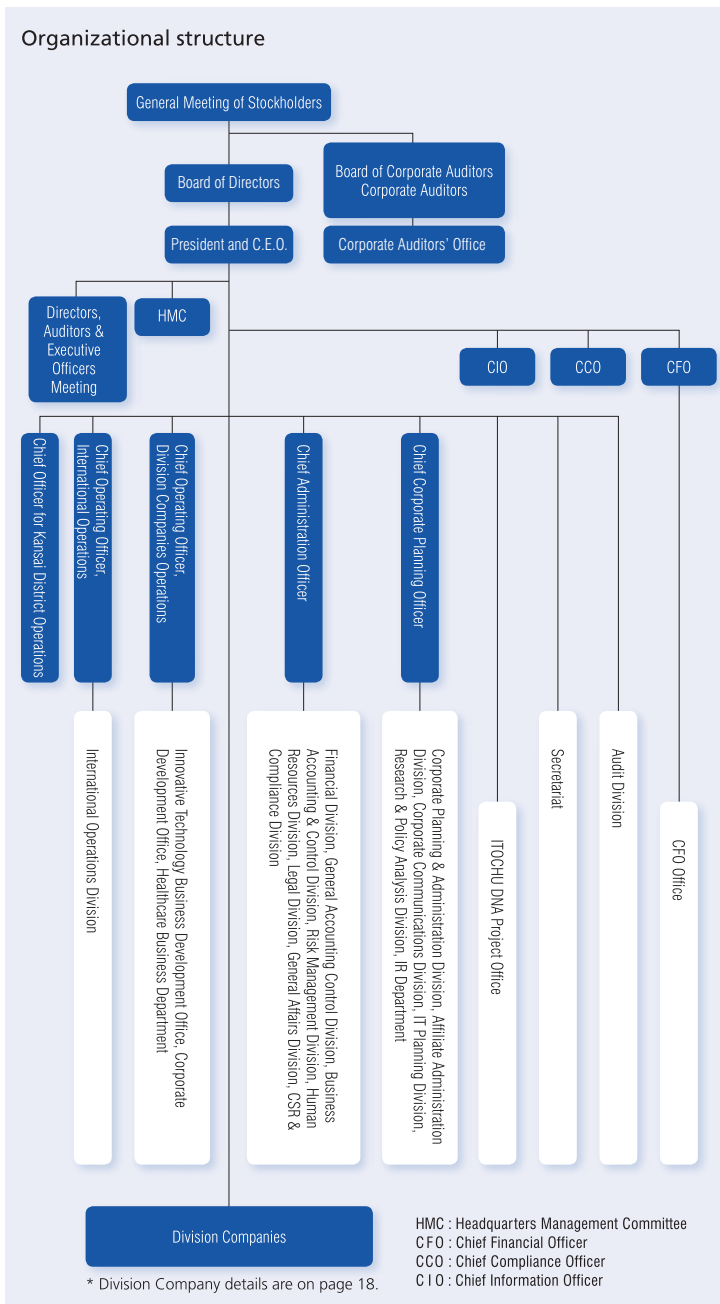
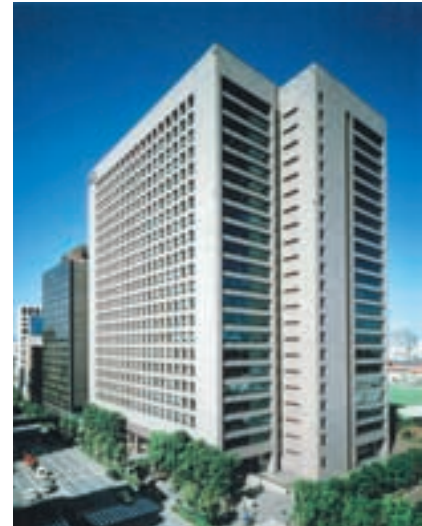


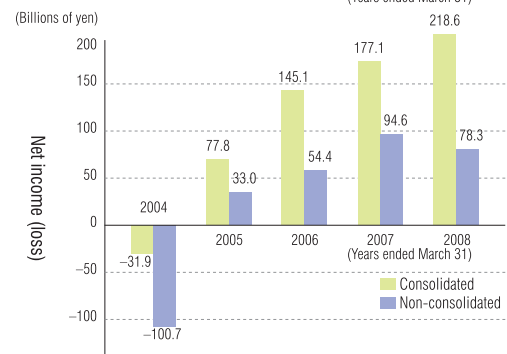
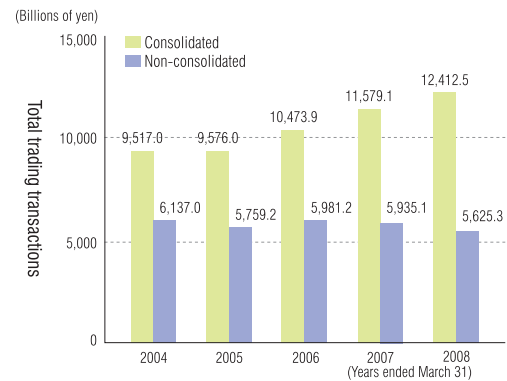
Corporate Profile

Corporate Name: ITOCHU Corporation
 Founded: 1858
 Incorporated: December 1, 1949
 Location of headquarters
 Tokyo headquarters: 5-1, Kita-Aoyama 2-chome, Minato-ku, Tokyo 107-8077, Japan
 Osaka headquarters: 1-3, Kyutaromachi 4-chome, Chuo-ku, Osaka 541-8577, Japan
 President & CEO: Eizo Kobayashi
 Capital: ¥202,241 million
 Number of offices in Japan: 17
 Number of offices overseas: 136
 (North America: 8 offices, Latin America: 15 offices, Europe: 19 offices, Africa: 8 offices, Middle East: 19 offices, CIS: 9 offices, China: 18 offices, Asia: 34 offices, Oceania: 6 offices)
 Number of employees: Consolidated: 48,657* / Non-consolidated: 4,107
 (as of March 31, 2008)

* The number of consolidated employees is based on actual working employees excluding temporary staff.

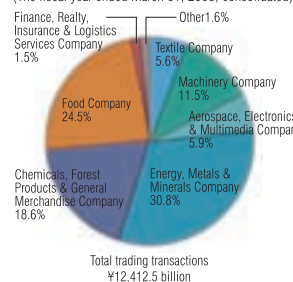


Financial overview



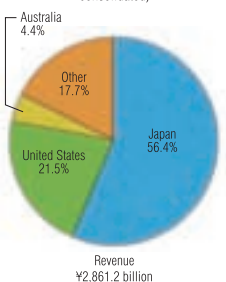
Total trading transactions by Division Company

(The fiscal year ended March 31, 2008, consolidated)



Revenue by region

(The fiscal year ended March 31, 2008, consolidated)



Notes:

- The financial data of ITOCHU Corporation are presented in accordance with U.S. GAAP.
- "Total trading transactions" is presented in accordance with Japanese accounting practice, and consists of sales with respect to transactions in which the companies act as principal and the total amount of transactions in which the companies act as an agent.
- "Revenue" is attributed to countries based on the locations of the assets.

(as of April 1, 2008)