

# Business Outline of the ITOCHU Group

The businesses of the ITOCHU Group comprehensively encompass upstream raw materials business areas through to downstream retail business areas, enabling it to provide a wide variety of goods and services that support people's everyday lives. In order to advance businesses worldwide, we make the fullest use of our capabilities as a general trading company. In other words, we trade, invest in businesses, and add value to these businesses through their overall coordination.

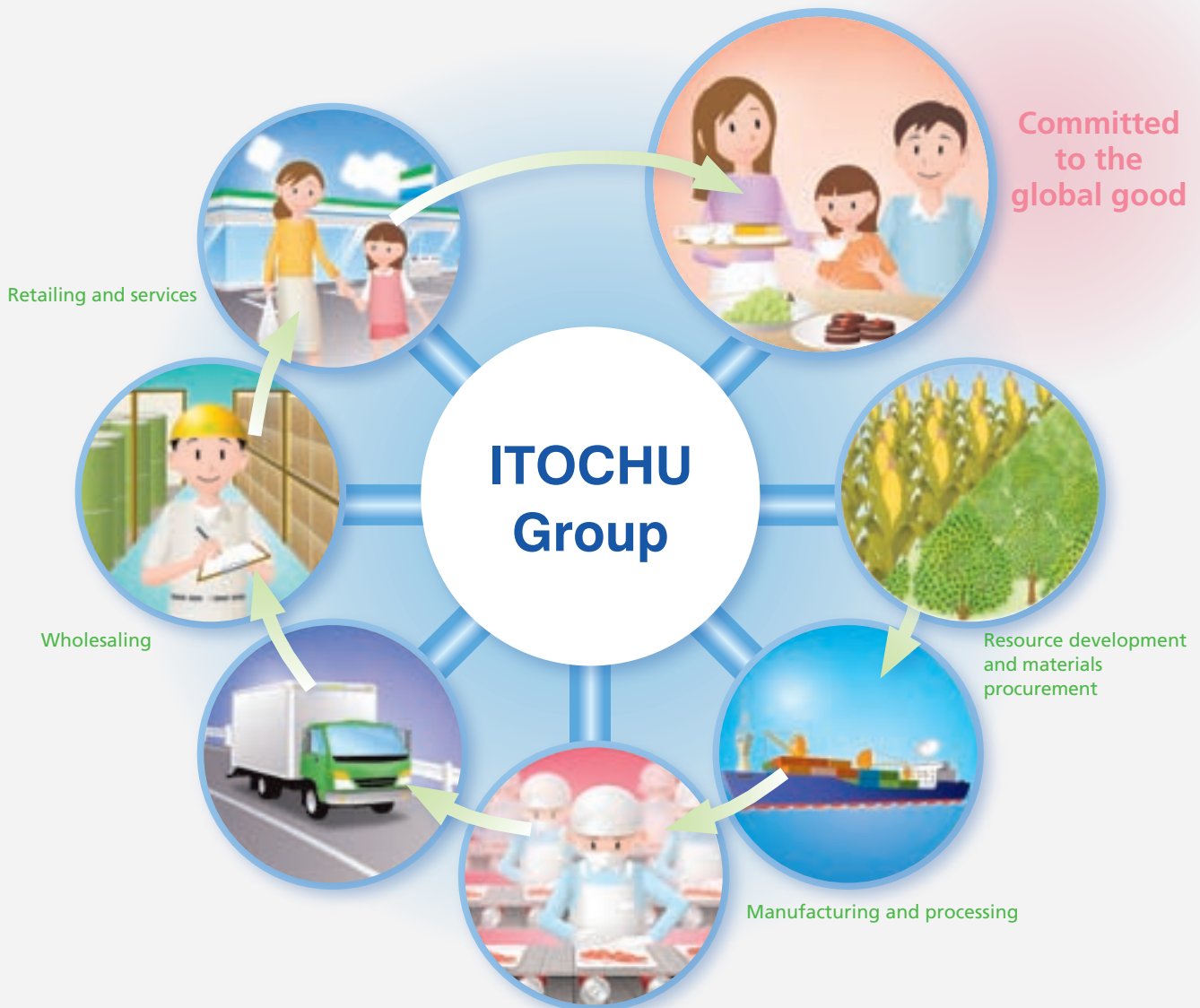
Further, a feature of the ITOCHU Group is its well-balanced business portfolio, which covers a broad range of industries and business areas.

## Trading

Trading is our core capability. It is to find in-demand, quality goods and services worldwide, purchase them, add value to them, and deliver them to places where they are in demand. Delivering quality goods and services to those who need them helps enrich everyone's life physically and spiritually and realizes our *Committed to the global good* corporate credo.

## Business investment

As well as trading, the ITOCHU Group develops businesses across a wide area by investing in or acquiring companies in key business areas and participating in their management. Those initiatives include upstream raw materials and natural resources development, midstream manufacturing and processing, and downstream retailing. By drawing on our diverse capabilities and deploying personnel, capital, and expertise to develop businesses, we strengthen group corporate management and build sound value chains linking upstream through to downstream businesses.

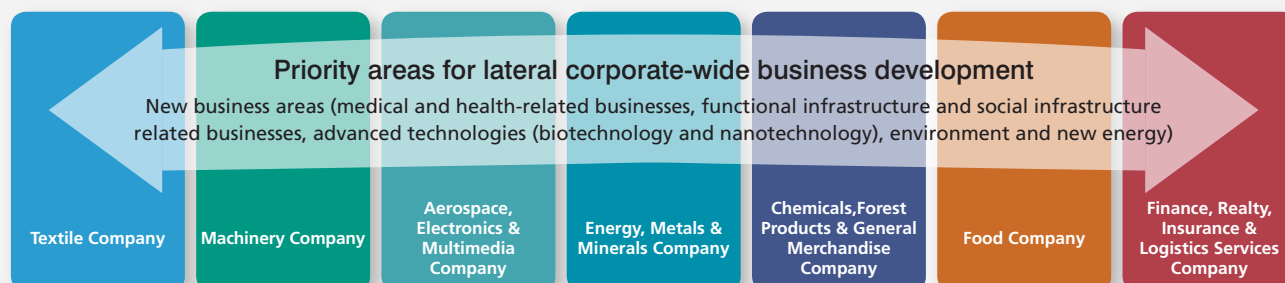


## The distinctive features and roles of Division Companies

ITOCHU Corporation uses a Division Company system in which each Division Company is responsible for corporate management in its business area. The resulting fast, flexible decision making enables us to operate businesses that cater to demand in a wide range of industries and business areas.

Also, ITOCHU Corporation develops lateral corporate-wide

businesses that concentrate the collective strength of Division Companies. Our medium-term management plan positions the lateral development of new corporate-wide businesses as a priority strategy in efforts to adopt a more aggressive approach to corporate management. Accordingly, we are developing businesses laterally to create synergies.



### Overview of Division Companies

Summary of businesses	Major products and services	Major group companies	Report page
<p><b>Textile Company</b></p> <p>The Division Company globally develops businesses that range from raw materials to apparel and fashion goods. Not limited to the garment business area, its activities cover a broad spectrum of consumer-related businesses, including food and living. While the Textile Company expands brand businesses, which is one of its core businesses, to overseas market, it also promotes further development of advanced technologies and focuses on new sales channels in the retail business area such as television and Internet shopping. By taking on the challenges of creating new business models, the Company aims to gain stable earnings and continuous growth.</p>	Textile raw materials, industrial textiles, textiles, apparel, fashion goods, branded products and services such as apparel, food, and living	<ul style="list-style-type: none"> <li>• ITOCHU FASHION SYSTEM Co., Ltd.</li> <li>• ROY-NE CO., LTD.</li> <li>• JOI'X CORPORATION</li> <li>• ITOCHU TEXTILE (CHINA) CO., LTD.</li> <li>• Prominent Apparel Ltd.</li> </ul>	P19
<p><b>Machinery Company</b></p> <p>With a mission to contribute to the development of local communities and international society, the Machinery Company develops infrastructure overseas as well as investing in businesses and trading in areas that include automobiles, ships, construction machinery, and industrial machinery. Also, the Division Company develops environment-friendly businesses, including trading in equipment related to water resources and the environment and the development of businesses related to renewable and alternative energy sources.</p>	Gas, oil, and petrochemical plants, ships, automobiles, railway rolling stock, power generation equipment, construction machinery, textile machinery, industrial machinery, medical equipment, electronic devices and equipment, equipment related to water resources and the environment	<ul style="list-style-type: none"> <li>• ITOCHU Plantech Inc.</li> <li>• ITOCHU Automobile Corporation</li> <li>• ITOCHU Sanki Corporation</li> <li>• MCL Group Limited</li> <li>• ITOCHU Automobile America Inc.</li> <li>• Century Leasing System, Inc.</li> </ul>	P21
<p><b>Aerospace, Electronics &amp; Multimedia Company</b></p> <p>The Division Company's IT &amp; Business Solutions Division and Media Business Division help improve the convenience and efficiency of everyday life mainly through investment in businesses in the areas of IT-related services, media content, and mobile telecommunication equipment and services. The Aerospace &amp; Electronic Systems Division engages in trading in such areas as the sale and leasing of aircraft and the sale of aerospace and security equipment.</p>	Programming supply and entertainment business, mobile telecommunication equipment and services, IT services and related equipment, systems and related equipment for computers and information processing, e-business, aerospace equipment, equipment related to security and electronic systems	<ul style="list-style-type: none"> <li>• ITOCHU Aviation Co., Ltd.</li> <li>• ITOCHU Techno-Solutions Corporation</li> <li>• Excite Japan Co., Ltd.</li> <li>• ITC NETWORKS CORPORATION</li> <li>• NANO Media Inc.</li> <li>• SPACE SHOWER NETWORKS INC.</li> </ul>	P23
<p><b>Energy, Metals &amp; Minerals Company</b></p> <p>Centered on business investment and trading, this Division Company is involved in the development and stable supply of mineral resources and energy, natural resource recycling business, and the development of new energy that minimizes the environmental burden. The Division Company provides stable supplies of mineral resources and energy to Japan and other countries and contributes to the economic development of resource-producing countries and the creation of a recycling society through resource recycling.</p>	Crude oil, petroleum products, LPG, LNG, nuclear fuel, iron ore, coal, aluminum, steel scrap, steel products, DME, solar cell related products	<ul style="list-style-type: none"> <li>• ITOCHU Metals Corporation</li> <li>• ITOCHU Petroleum Japan Ltd.</li> <li>• ITOCHU Minerals &amp; Energy of Australia Pty Ltd</li> <li>• ITOCHU Oil Exploration (Azerbaijan) Inc.</li> <li>• Marubeni-Itochu Steel Inc.</li> <li>• ITOCHU ENEX CO., LTD.</li> </ul>	P25
<p><b>Chemicals, Forest Products &amp; General Merchandise Company</b></p> <p>The Division Company comprises the Forest Products &amp; General Merchandise Division, which handles lumber, housing materials, paper, pulp, afforestation, natural rubber, tires, glass, cement, and other materials, and the Chemicals Division, which deals in organic and inorganic chemicals, plastics, and other chemical products. With businesses catering to a broad range of customer groups, from upstream industries through to downstream consumers, the Division Company helps make people's everyday lives the world over safe and convenient.</p>	Logs and lumber, building materials, chips, pulp, paper, crude rubber, tires, ceramic products, basic chemicals, fine chemicals, pharmaceutical raw materials, inorganic chemicals, plastics, various consumer products	<ul style="list-style-type: none"> <li>• ITOCHU Kenzai Corp.</li> <li>• ITOCHU Pulp &amp; Paper Corp.</li> <li>• ITOCHU CHEMICAL FRONTIER Corporation</li> <li>• ITOCHU PLASTICS INC.</li> <li>• DAIKEN CORPORATION</li> <li>• TAKIRON Co., Ltd.</li> <li>• C.I. KASEI Co., Ltd.</li> </ul>	P27
<p><b>Food Company</b></p> <p>The Division Company combines trading and business investment in Japan and overseas to develop food value chains that extend from food resource development, production, and processing through to intermediate distribution and retailing. The Food Company's mission is to protect people's lives by providing a stable supply of safe food.</p>	Wheat, barley, flour, rice, starch, vegetable oil, soybeans, corn, soybean oil, rapeseed oil, sugar, sweeteners, isomerized sugar syrup, dairy products, coffee, liquor, cacao, fruit juice, beverages, marine products, livestock products, fruit and vegetables, frozen vegetables, frozen seafood, commercial-use ingredients, processed food, confectionery, frozen food, canned food, pet food	<ul style="list-style-type: none"> <li>• ITOCHU SHOKUJIN Co., Ltd.</li> <li>• NIPPON ACCESS, INC.</li> <li>• Japan Foods Co., Ltd.</li> <li>• Fuji Oil Co., Ltd.</li> <li>• FamilyMart Co., Ltd.</li> <li>• YOSHINOYA HOLDINGS</li> <li>• Yayoi Foods Co., Ltd.</li> </ul>	P29
<p><b>Finance, Realty, Insurance &amp; Logistics Services Company</b></p> <p>The Financial &amp; Insurance Services Division advances business in the areas of corporate financial solutions, which use financing techniques; insurance and reinsurance agent businesses; and underwriting. The Construction &amp; Realty Division is engaged in the development of housing, logistics facilities, commercial facilities, and office facilities that uses real estate securitization methods (real estate funds) and undertakes housing-related businesses such as condominium businesses. The Logistics Services Division is responsible for logistics inside and outside the ITOCHU Group. In particular, the Division is developing integrated logistics value chains overseas.</p>	Foreign exchange, credit card business, fund (securitization) business, insurance agent business and insurance broker business, real estate securitization business, housing-related business, international general logistics	<ul style="list-style-type: none"> <li>• ITOCHU Finance Corporation</li> <li>• ITOCHU Property Development, Ltd.</li> <li>• ITOCHU Urban Community Ltd.</li> <li>• CENTURY 21 REAL ESTATE OF JAPAN LTD.</li> <li>• i-LOGISTICS CORP</li> <li>• Orient Corporation</li> </ul>	P31