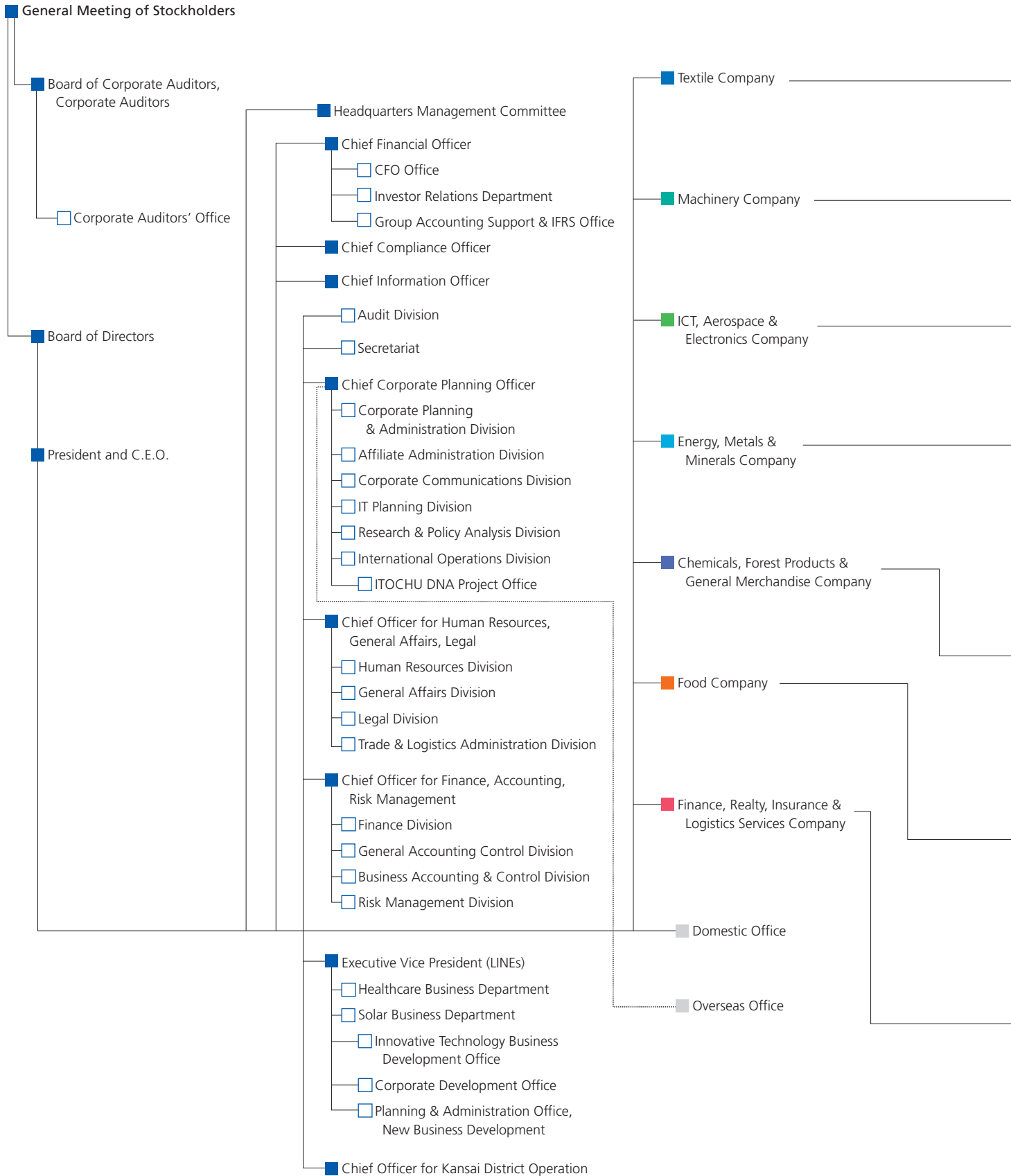
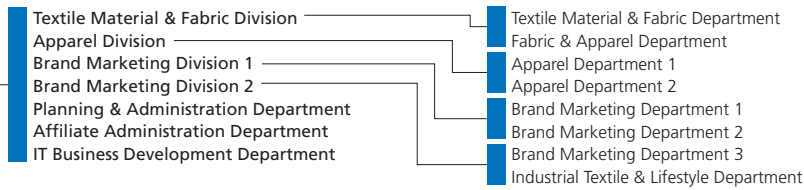


As of July 1, 2010

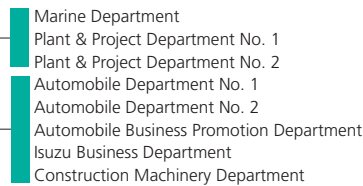
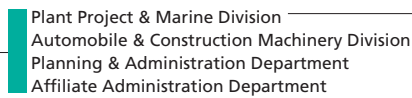
Operational Structure



In addition to the above organization, the Group Management Committee (GMC) was established to heighten the overall value of the ITOCHU Group.



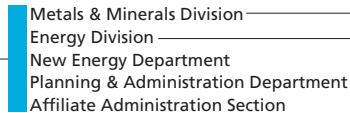
Number of Employees	
Consolidated	11,608
Non-consolidated	392
Number of Subsidiaries and Associates	
Domestic	25
Overseas	14



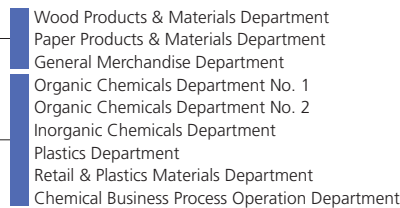
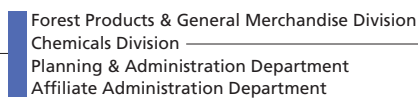
Number of Employees	
Consolidated	8,050
Non-consolidated	408
Number of Subsidiaries and Associates	
Domestic	12
Overseas	38



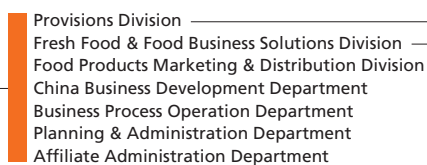
Number of Employees	
Consolidated	11,889
Non-consolidated	210
Number of Subsidiaries and Associates	
Domestic	29
Overseas	13



Number of Employees	
Consolidated	4,262
Non-consolidated	259
Number of Subsidiaries and Associates	
Domestic	14
Overseas	16



Number of Employees	
Consolidated	9,404
Non-consolidated	296
Number of Subsidiaries and Associates	
Domestic	23
Overseas	49



Number of Employees	
Consolidated	7,256
Non-consolidated	385
Number of Subsidiaries and Associates	
Domestic	25
Overseas	28



Number of Employees	
Consolidated	3,873
Non-consolidated	278
Number of Subsidiaries and Associates	
Domestic	27
Overseas	20

Others	
Number of Employees	
Consolidated	6,037
Non-consolidated	2,031

Number of Subsidiaries and Associates	
Domestic	15
Overseas	65

Total	
Number of Employees	
Consolidated	62,379
Non-consolidated	4,259

Number of Subsidiaries and Associates	
Domestic	170
Overseas	243

\* The numbers of employees, subsidiaries, and associates are as of March 31, 2010.

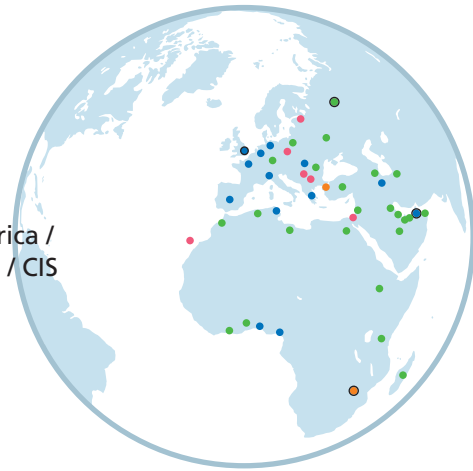
\* The number of consolidated employees is based on actual working employees excluding temporary staff.

\* Others of the number of non-consolidated employees includes a total of 1,269 employees; employees temporary relocated to other companies (domestic 635, overseas 296), employees and trainees assigned to overseas posts (338).

\* The criteria to count group companies is changed so that the number of companies directly invested by ITOCHU or its overseas trading subsidiaries are shown above.

As of July 1, 2010

## [ Global Network ]

North America /  
Latin AmericaEurope / Africa /  
Middle East / CIS**North America / Latin America****North America**

ITOCHU International Inc.  
22nd and 23rd Floors, Bank of America  
Plaza, 335 Madison Avenue, New York  
N.Y. 10017, U.S.A.

Telephone : 1-212-818-8000

Facsimile : 1-212-818-8543

- New York, Chicago, San Francisco,  
Los Angeles, Washington, Houston,  
Portland, Vancouver, Mexico City

**Latin America**

ITOCHU BRASIL S.A.

Av. Paulista 37

19 andar, Vila Mariana,

São Paulo CEP 01311-902, BRAZIL

Telephone : 55-11-3170-8501

Facsimile : 55-11-3170-8549

- São Paulo, Rio de Janeiro, Panama, Buenos  
Aires, Bogota, Santiago, Caracas, Quito
- Lima, Havana

**Europe / Africa / Middle East / CIS****Europe**

ITOCHU Europe PLC  
The International Press Center,  
76 Shoe Lane, London EC4A 3PJ, U.K.  
Telephone : 44-20-7827-0822  
Facsimile : 44-20-7583-1847

- London, Düsseldorf, Hamburg, Paris,  
Milano, Madrid, Athens, Budapest, Tunis
- Alger, Casablanca, Praha, Bucharest,  
Warszawa

**Africa**

ITOCHU Corporation, Johannesburg Branch  
2nd Floor Block No. 9, Fourways Golf Park,  
Roos Street, Fourways, 2055, Johannesburg,  
SOUTH AFRICA

Telephone : 27-11-465-0030

Facsimile : 27-11-465-0635/0604

- Lagos, Douala
- Johannesburg
- Abidjan, Accra, Nairobi, Addis Ababa,  
Tananarive

**Middle East**

ITOCHU MIDDLE EAST FZE  
LOB 12 - Office No. 119 & 121, P.O.Box  
61422, Jebel Ali Free Zone, Dubai, U.A.E.

Telephone : 971-4-302-0000

Facsimile : 971-4-335-5321

- Dubai, Tehran
- Istanbul
- Cairo, Amman, Ankara, Riyadh, Damman,  
Kuwait, Muscat, Doha, Tripoli, Karachi,  
Islamabad, Abu Dhabi

**CIS**

ITOCHU Corporation, Moscow Office  
Savinskaya Office Building, 9th Floor,  
Savinskaya Nab., 15, Moscow, 119435,  
RUSSIAN FEDERATION

Telephone : 7-495-961-1456

Facsimile : 7-495-961-1447/1448

- Moscow, Almaty, Kiev, Ashgabat,  
Tashkent, Baku

**Oceania / China / Asia / Japan****Oceania**

ITOCHU Australia Ltd.  
Level 29, Grosvenor Place, 225 George  
Street, Sydney, N.S.W. 2000, AUSTRALIA  
Telephone : 61-2-9239-1500  
Facsimile : 61-2-9241-3955

- Sydney, Melbourne, Perth, Brisbane,  
Auckland
- Port Moresby

**China**

ITOCHU (China) Holding Co., Ltd.  
Room 501, 5/f. No. 2 Office Building,  
China Central Place, No. 79, Jian Guo  
Road, Chaoyang District, Beijing,  
THE PEOPLE'S REPUBLIC OF CHINA  
(ZIP code: 100025)

Telephone : 86-10-6599-7000

Facsimile : 86-10-6599-7111

- Beijing, Shanghai, Dalian, Tianjin,  
Qingdao, Hong Kong, Guangzhou,  
Shenzhen, Nanjing, Sichuan, Wuhan
- Shenyang, ChangChun

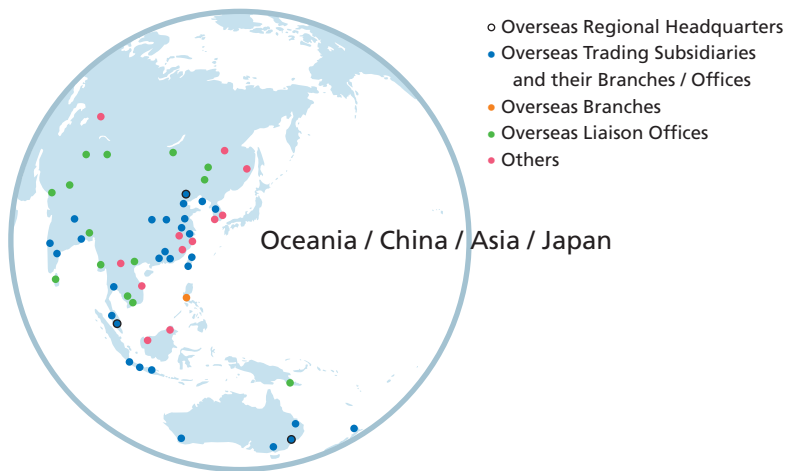
**Asia**

ITOCHU Singapore Pte Ltd.  
9 Raffles Place, #41-01 Republic Plaza,  
SINGAPORE 048619

Telephone : 65-6230-0400

Facsimile : 65-6230-0560

- Singapore, Kuala Lumpur, Jakarta,  
Surabaya, Bandung, Bangkok,  
New Delhi, Mumbai, Kolkata, Chennai,  
Taipei, Kaohsiung, Seoul
- Kuala Lumpur, Manila
- Jakarta, Hanoi, Ho Chi Minh City, Yangon,  
Phnom Penh, Colombo, Dhaka,  
Ulaanbaatar



## Japan

### Headquarters

#### Tokyo

5-1, Kita-Aoyama 2-chome,  
Minato-ku, Tokyo, 107-8077, JAPAN  
Telephone :81-3-3497-2121  
Facsimile :81-3-3497-4141

#### Osaka

1-3, Kyutaro-machi 4-chome,  
Chuo-ku, Osaka, 541-8577, JAPAN  
Telephone :81-6-6241-2121  
Facsimile :81-6-6241-3220

Nagoya, Kyushu, Chugoku, Hokkaido,  
Tohoku, Niigata, Shizuoka, Toyama,  
Kanazawa, Fukui, Shikoku, Naha, Oita

## [ Bank List ]

ITOCHU has financial transactions with the following banks.

### North America

Bank of America, N.A.  
Canadian Imperial Bank of Commerce  
Citibank, N.A.  
Comerica Bank  
JPMorgan Chase Bank  
Wells Fargo Capital Finance

### Central & South America

Grupo Financiero Banamex, S.A. de C.V.  
Helms Bank S.A.

### Europe & Africa

Barclays Bank PLC  
BNP Paribas  
Credit Agricole  
Deutsche Bank  
ING Bank N.V.  
Intesa Sanpaolo S.p.A.  
Investec Bank Limited  
Rabobank Nederland  
The Royal Bank of Scotland plc  
Societe Generale  
The Standard Bank of  
South Africa Limited  
Standard Chartered Bank  
Unicredit

### Middle East

SAMBA Financial Group  
Union National Bank

### Oceania

Australia and New Zealand  
Banking Group Limited  
Westpac Banking Corporation

### Asia

Bangkok Bank Public Company Limited  
Bank of China  
Bank of Communications  
CIMB Thai Public Company Limited  
The Hongkong and Shanghai  
Banking Corporation Limited  
Industrial and Commercial Bank of China  
Kasikornbank Public Company Limited  
Malayan Banking Berhad  
RHB Bank Berhad

### Japan

Mizuho Corporate Bank, Ltd.  
Sumitomo Mitsui Banking Corporation  
The Bank of Tokyo-Mitsubishi UFJ, Ltd.  
Shinsei Bank, Ltd.  
Aozora Bank, Ltd.  
Resona Bank, Limited  
The Sumitomo Trust and Banking Co., Ltd.  
The Chuo Mitsui Trust  
and Banking Company, Limited  
Mizuho Trust & Banking Co., Ltd.  
Mitsubishi UFJ Trust  
and Banking Corporation  
Japan Finance Corporation,  
Japan Bank for International Cooperation  
Development Bank of Japan  
The Norinchukin Bank  
Shinkin Central Bank

# Major Subsidiaries and Associated Companies

As of March 31, 2010

	Name	Voting Shares (%)	Operations	Fiscal Year-End Month	
<b>Textile Company</b>					
<b>Subsidiaries</b>	Domestic	ROY-NE CO., LTD.	99.9	Manufacture and wholesale of woven and knitted products	3
		SANKEI CO., LTD.	90.5	Wholesale of garment materials	2
		MAGASseek Corporation	64.4	Retail web site of fashion apparel by PC and mobile	3
		JAVA HOLDINGS CO., LTD.	65.0	Holding company of retail of ladies' & kids' apparel brand	2
		LEILIAN CO., LTD.	61.1	Retail of women's apparel	12
		ITOCHU MODEPAL CO., LTD.	100.0	Manufacture and wholesale of apparel	3
		UNICO CORPORATION	100.0	Manufacture and wholesale of uniforms	3
		JOI'X CORPORATION	100.0	Sale of men's apparel	7
		BMI HOLDINGS CO., LTD.	100.0	Holding company of brand business	3
		SCABAL JAPAN Co., Ltd.	80.0	Import and sale of SCABAL brand products	3
		ITOCHU FASHION SYSTEM Co., Ltd.	100.0	Comprehensive consulting in the fashion industry	3
		RAIKA CO., LTD.	100.0	Manufacture and wholesale of apparel	3
		ITOCHU HOME FASHION CORPORATION	97.9	Manufacture and wholesale of home furnishings	2
		CI Shopping Service Co., Ltd.	100.0	Sale of everyday items aimed at ITOCHU Group employees and families	3
		CI TEXTILE SERVICE CO., LTD.	100.0	Outsourcing of administrative duties for delivery and accounting	3
	<b>Overseas</b>		ITOCHU Textile Prominent (ASIA) Ltd. (Hong Kong S.A.R., China)*	100.0	Wholesale of materials, yarns, textile, and apparel
		PROMINENT (VIETNAM) CO., LTD. (Vietnam)	100.0	Quality control of textile and apparel	12
		UNIMAX SAIGON CO., LTD. (Vietnam)	80.0	Manufacture of uniforms	12
		ITOCHU TEXTILE (CHINA) CO., LTD. (China)	100.0	Production control and wholesale of textile materials, fabrics, and apparel	12
<b>Associates</b>	Domestic	MARUKO CO., LTD.	26.5	Manufacture and wholesale of lady's underwear, etc.	8
		DESCENTE, LTD.	25.7	Manufacture and wholesale of sportswear, etc.	3
		DEAN & DELUCA JAPAN Co., Ltd.	20.4	Operation of cafeteria chain and other new business	2
		T.KAWABE & CO., LTD.	25.3	Manufacture and sales of handkerchiefs, scarves, and other accessory goods	3
		Watakyu Seimoa Corporation	25.0	Total outsourcing service mainly linen supply for medical & welfare institutions	6
		AYAHA CORPORATION	33.5	Manufacture of tire cords, etc.	3
	Overseas	Thai shikibo co., Ltd. (Thailand)	30.0	Manufacture of cotton yarn	12
		Dalian Yawen Underwear Co., Ltd. (China)	28.0	Manufacture of women's underwear	12
		Paul Smith Group Holdings Limited (U.K.)	40.4	Holding company of Paul Smith Group	6
		Shanshan Group Co., Ltd. (China)	28.0	Holding company of Shanshan Group, operating a textile business, electronic components, etc.	12

\* On February 23, 2010, the name of Prominent Apparel Ltd. was changed to ITOCHU Textile Prominent (ASIA) Ltd.

## Machinery Company

<b>Subsidiaries</b>	Domestic	ITOCHU Plantech Inc.	100.0	Export and import of small-to-medium-scale plant and equipment and domestic environmental and energy solution businesses	3
		IMECS Co., Ltd.	100.0	Ownership and operation of ships, chartering, ship machinery, secondhand ships, and administration management of overseas shipping companies	3
		ITOCHU Automobile Corporation	100.0	Export / import and inter-third trade of car parts	3
		ITOCHU CONSTRUCTION MACHINERY CO., LTD.	100.0	Sales and rental of construction machinery	3
	Overseas	I-Power Investment Inc. (U.S.A.)	100.0	Investment company in the power industry	12
		Tyr Energy Inc. (U.S.A.)	100.0	Power generation business in North America	12
		NAES Corporation (U.S.A.)	100.0	Power plant operation and maintenance services provider for independent power producers and utilities	12
		MCL Group Limited (U.K.)	100.0	Warehousing and financing of motor vehicles	12
		IM AUTOTRADE HOLDING G.m.b.H (Austria)	100.0	Wholesale and inter-third trade of motor vehicles and motorcycles	12
		ITOCHU Automobile America Inc. (U.S.A.)	100.0	Retail, distribution, and trading of motor vehicles	12
	Auto Investment Inc. (U.S.A.)	100.0	Retail of motor vehicles	12	
	PROMAX Automotive, Inc. (U.S.A.)	100.0	Third-party logistics services	12	
	PT. SUZUKI Finance Indonesia (Indonesia)	70.0	Automobile finance company	12	
	VEHICLES MIDDLE EAST FZCO (U.A.E.)	100.0	Trade finance for motor vehicles	12	
	MULTIQUIP INC. (U.S.A.)	100.0	Distribution and manufacturing of light construction equipment and generators	12	

	Name	Voting Shares (%)	Operations	Fiscal Year-End Month
Associates	Domestic	Barracuda & Caratinga Investment Corporation	30.0 Investment in the project for the construction, ownership, and operation of deep sea oil & gas production facilities	12
		Malha Gas Investment Co., Ltd.	30.0 Investment in the project for the construction, ownership, and operation of gas pipelines	3
		YANASE & CO., LTD.	22.0 Sales and repair of automobiles	9
		Isuzu Network Co., Ltd.	25.0 Commercial vehicle life cycle business	3
		Century Tokyo Leasing Corporation*	20.0 Diversified leasing business, various types of financing, and International business	3
	Overseas	American Renewables, LLC (U.S.A.)	49.0 Development company of renewable energy generation facilities	12
		Komatsu Southern Africa (Pty) Ltd. (Republic of South Africa)	20.0 Sales and service of construction machinery	3
		PT Hexindo Adiperkasa Tbk (Indonesia)	22.5 Sales and service of construction machinery	3

\* On April 1, 2009, Century Leasing System, Inc., and Tokyo Leasing Co., Ltd., merged to form Century Tokyo Leasing Corporation.

### ICT, Aerospace & Electronics Company

Subsidiaries	Domestic	ITOCHU Techno-Solutions Corporation	52.6 Sales, maintenance and support of computers and network systems; commissioned software development; information processing services	3
		ITOCHU ELECTRONICS CORP.	100.0 Full service interactive agency or digital marketing company, providing integrated digital marketing technologies and services including web site developments, online advertising, BPO services	3
		Excite Japan Co., Ltd.	59.2 Internet information service	3
		SPACE SHOWER NETWORKS INC.	51.0 Music channel on cable / satellite television	3
		ITC NETWORKS CORPORATION	60.7 Distribution and retail business of mobile phones	3
		NANO Media Inc.	51.3 Content publishing, mobile site operation, and application development	3
		ITOCHU Aviation, Inc.	100.0 Import / export and wholesale of aircraft, aircraft part, and related equipment	3
		ITOCHU Sanki Corporation*	100.0 Import / export and wholesale of industrial machinery	3
Overseas	ITOCHU AirLease B.V. (Netherlands)	100.0 Lease of commercial aircraft	3	
Associates	Domestic	Asurion Japan K.K.	33.3 Mobile insurance agency	12
		JAMCO Corporation	33.3 Maintenance of aircraft and manufacture of aircraft interior	3
		SUNCALL CORPORATION	26.4 Manufacture and sales of optical communication devices, electronic devices, and assembly	3
		MYSTAR ENGINEERING CORP.	20.3 Maintenance & engineering service for mechatronics & facilities	3

\* On April 1, 2010, the name of ITOCHU Sanki Corporation was changed to ITOCHU MACHINE-TECHNOS CORPORATION, through merger with ITOCHU MECHATRONICS CORPORATION.

### Energy, Metals & Minerals Company

Subsidiaries	Domestic	ITOCHU ENEX CO., LTD.	53.6 Wholesale of petroleum products and gas	3
		ITOCHU Metals Corporation	100.0 Import / export and wholesale of non-ferrous / light metals, products, and steel scrap, development of recycle business	3
		ITOCHU Oil Exploration Co., Ltd.	100.0 Exploration and production of oil, gas, and other hydrocarbon resources	3
		ITOCHU Petroleum Japan Ltd.	100.0 Investment to the trading company of crude oil and petroleum products	3
		JB BioEnergy Inc.	100.0 Investment in projects of bioethanol in Brazil	12
	Overseas	ITOCHU Minerals & Energy of Australia Pty Ltd (Australia)	100.0 Investment and sales in projects of iron ore, coal, and bauxite mining, manufacture of alumina and oil exploration	3
		IPC EUROPE LTD. (U.K.)	100.0 International trade of crude oil and petroleum products	12
		ITOCHU Oil Exploration (Azerbaijan) Inc. (Cayman Islands, British West Indies)	100.0 Exploration and production of crude oil and gas	12
	<input type="checkbox"/> Nippon Uranium Resources (Australia) Pty Limited (Australia)	100.0 Investment in uranium project in Namibia	3	
Associates	Domestic	Marubeni-Itochu Steel Inc.	50.0 Import / export and wholesale of steel products	3
		NISSHO Petroleum Gas Corporation	25.0 Wholesale of LPG and petroleum products	3
		Japan Ohanet Oil & Gas Co., Ltd.	35.0 Exploration and production of gas and condensate	12
		Brazil Japan Iron Ore Corporation	47.7 Investment in projects of iron ore in Brazil	3
	Overseas	Chemoil Energy Limited (Hong Kong S.A.R., China)	37.5 International trade of petroleum products	12
	IPC (USA), Inc. (U.S.A.)	50.0 International trade of crude oil and petroleum products	12	

■ : Subsidiary changed from associates in the fiscal year ended March 2010  
 : Newly consolidated subsidiaries in the fiscal year ended March 2010

	Name	Voting Shares (%)	Operations	Fiscal Year-End Month	
<b>Chemicals, Forest Products &amp; General Merchandise Company</b>					
<b>Subsidiaries</b>	Domestic	ITOCHU Kenzai Corp.	87.3	Wholesale of wood products and building materials	3
		Daishin Plywood Co., Ltd.	100.0	Manufacture of plywood	3
		ITOCHU Forestry Corp.*	100.0	Designing and installation of water treatment system, landscape and gardening, and greenery business	3
		ITOCHU Pulp & Paper Corp.	100.0	Wholesale of paper, paper boards, and various materials	3
		ITOCHU Ceratech Corp.	100.0	Manufacture and sale of ceramic raw materials and products	3
		ITOCHU Windows Co., Ltd.	66.0	Manufacture and sale of insulating glass	3
		ITR Corp.	100.0	Wholesale and retail of tires	3
		IFA Co., LTD.	100.0	Wholesale of shoes and bags	3
		ITOCHU CHEMICAL FRONTIER Corporation	100.0	Wholesale of fine chemicals and related raw materials	3
		ITOCHU PLASTICS INC.	100.0	Development and wholesale of plastics and related products	3
		C.I. Kasei Co., Ltd.	97.6	Manufacture of PVC pipe and film and related materials	3
		The Japan Cee-Bee Chemical Co., Ltd.	80.0	Manufacture and processing of metal pretreatment chemicals	3
		VCJ Corporation	80.0	Wholesale of DVD / video and plastic products for retailers	3
		Chemical Logitec Co., Ltd.	100.0	Management of chemical storage warehouses and transportation of chemicals and other cargos	3
		SHOWA ALUMINUM POWDER K.K.	85.1	Manufacture of aluminum paste	12
	Overseas	CIPA Lumber Co. Ltd. (Canada)	100.0	Manufacture of veneer	12
		Pacific Woodtech Corporation (U.S.A.)	100.0	Manufacture of LVL & I-Joist	12
		PrimeSource Building Products, Inc. (U.S.A.)	100.0	Wholesale of building materials	12
		PT. Aneka Bumi Pratama (Indonesia)	100.0	Processing of natural rubber	12
		Stapleton's (Tyre Services) Ltd. (U.K.)	100.0	Wholesale and retail of tires	12
		ITOCHU Plastics Pte., Ltd. (Singapore)	100.0	Wholesale of plastic resins	12
		Plastribution Limited (U.K.)	100.0	Wholesale of synthetic resins	12
		RUBBERNET (ASIA) PTE LTD. (Singapore)	80.0	Sale of crude rubber	12
		ITOCHU Chemicals America Inc. (U.S.A.)	100.0	Wholesale of chemical products and synthetic resins	12
		REMEJE PHARMACEUTICALS (CHINA) CO., LTD. (China)	70.0	Import, export, and wholesale of pharmaceuticals (Rx, OTC), supplements, and other healthcare goods in China	12
		Hangzhou New Huahai Business & Trading Co., Ltd. (China)	85.0	Wholesale of cosmetics and daily goods, and sale of cosmetics, skincare products, toiletry products, and other daily goods	12
<b>Associates</b>	Domestic	Japan Brazil Paper and Pulp Resources Development Co., Ltd.	25.9	Investment in CENIBRA, one of the largest eucalyptus pulp manufacturers in Brazil	3
		DAIKEN CORPORATION	25.1	Manufacture of building materials and construction parts	3
		TAKIRON Co., Ltd.	27.5	Manufacture of flat and corrugated plastic sheets	3
		TOHO EARTHTECH, INC.	34.2	Exploration and production of natural gas and iodine	3
		Ningbo PTA Investment, Co., Ltd	35.0	Investment in manufacture of PTA in China	3
	Overseas	ALBANY PLANTATION FOREST COMPANY OF AUSTRALIA PTY. LIMITED (Australia)	28.4	Plantation of eucalyptus trees for papermaking	3
		DAIKEN NEWZEALAND LIMITED (New Zealand)	49.0	Manufacture of MDF	12
		SOUTH EAST FIBRE EXPORTS PTY. LTD. (Australia)	37.5	Manufacture of woodchip	12
		THAITECH RUBBER CORPORATION LTD. (Thailand)	33.0	Processing of natural rubber	12
		Siam Riso Wood Products Co., Ltd. (Thailand)	27.5	Manufacture of particle board	12
		YOKOHAMA RUSSIA L.L.C. (Russia)	20.0	Wholesale of tires	12
		NARENDRA PLASTIC PVT. LTD. (India)	29.9	Manufacture of plastics bags	3
		SUMIKA POLYMER COMPOUNDS (EUROPE) LTD. (U.K.)	25.0	Sale and manufacture of compound of plastic raw materials	12
		Shanghai Baoling Plastics Co., Ltd. (China)	22.6	Manufacture of plastic products	12
		Shanghai Jinpu Plastic Packaging Material Co., Ltd. (China)	30.0	Manufacture of polypropylene films	12
		Tetra Chemicals (Singapore) Pte. Ltd. (Singapore)	40.0	Sale and manufacture of MTBE (Methyl t-Butyl Ether)	12
		SUMIPEX (THAILAND) CO., LTD. (Thailand)	49.0	Manufacture of PMMA sheet	12
		NCT Holland B.V. (Netherlands)	40.0	Trading and distribution of the plastics materials based on Europe and Middle East	12
		BRUNEI METHANOL COMPANY SDN. BHD. (Brunei)	25.0	Manufacture of methanol in Brunei	12
		TODA AMERICA INC. (U.S.A.)	50.0	Sale and manufacture of cathode materials for Lithium Ion Batteries	3
		TODA ADVANCED MATERIALS INC. (Canada)	50.0	Sale and manufacture of precursor materials for use in Lithium Ion Batteries cathodes	12

\* On April 1, 2010, the name of ITOCHU Forestry Corp. was changed to ITC Green & Water Corp.

	Name	Voting Shares (%)	Operations	Fiscal Year-End Month		
<b>Food Company</b>						
<b>Subsidiaries</b>	Domestic	ITOCHU Feed Mills Co., Ltd.	85.9	Manufacture and wholesale of compound feeds	3	
		ITOCHU Sugar Co., Ltd.	100.0	Manufacture and processing of sugar and by-products	3	
		I-FOODS Co., Ltd.	100.0	Import and wholesale of food materials	3	
		ITOCHU Rice Corporation	89.6	Wholesale of rice	3	
		Japan Nutrition Co., Ltd.	100.0	Manufacture and wholesale of feed and feed additive	3	
		Yayoi Foods Co., Ltd.	93.2	Manufacture of frozen prepared foods	3	
		ITOCHU FRESH Corporation	100.0	Processing and wholesale of fish, meat, and agri-products	3	
		Universal Food Co., Ltd.	98.0	Planning supply-chain management in food service business	3	
		ITOCHU SHOKUHIN Co., Ltd.	51.7	Wholesale and distribution of foods	9	
		NIPPON ACCESS, INC.	69.8	Wholesale and distribution of foods	3	
	Family Corporation Inc.	100.0	Logistics services of frozen, chilled, and dry foods and sundries for convenience store chain, retailers, and food service business	3		
	Overseas	OILSEEDS INTERNATIONAL LTD. (U.S.A.)	100.0	Safflower oil manufacture	7	
<b>Associates</b>	Domestic	Fuji Oil Co., Ltd.	25.7	Integrated manufacturer of cooking oil and soybean protein	3	
		Japan Foods Co., Ltd.	35.0	Production of soft drinks	3	
		SHIBUSHI SILO CO., LTD.	25.0	Harbor transport and warehousing business	3	
		Kumejima Sugar Co., Ltd.	34.8	Production and sales of raw sugar	6	
		Prima Meat Packers, Ltd.	39.7	Production and marketing of meat, ham, sausage, and processed foods	3	
		Yoshinoya Holdings Co., Ltd.	21.0	Operation of Beef Bowl and other restaurant chain	2	
		KI Fresh Access, Inc.	33.5	Distributor of fruits and vegetables	3	
		SHOW-WA Co., Ltd.	20.0	Wholesale of foods	3	
		FamilyMart Co., Ltd.	31.5	Operation of a convenience store chain, using the name FamilyMart, and a franchise system	2	
		Overseas	PALMAJU EDIBLE OIL SDN. BHD. (Malaysia)	30.0	Refining of palm oil	12
		CGB ENTERPRISES, INC. (U.S.A.)	50.0	Handling of grain and operation of barges	5	
		ASAHI BREWERIES ITOCHU (HOLDINGS) LIMITED (Hong Kong S.A.R., China)	40.0	Holding company of Chinese beer manufacturers	12	
		P.T. ANEKA TUNA INDONESIA (Indonesia)	47.0	Production of canned and pouched tuna	12	
		WINNER FOOD PRODUCTS LTD. (Hong Kong S.A.R., China)	26.0	Manufacture and wholesale of processed foods	12	
		TAIWAN DISTRIBUTION CENTER CO., LTD. (Taiwan)	39.4	Wholesale of foods and sundries	12	
		☐ TING HSIN (CAYMAN ISLANDS) HOLDING CORP. (Cayman Islands, British West Indies)	20.0	Holding company of processed foods manufacturers, food services, and retail chain stores in China and Taiwan	12	
	<b>Finance, Realty, Insurance &amp; Logistics Services Company</b>					
	<b>Subsidiaries</b>	Domestic	ITOCHU Finance Corporation	99.1	Loan and other finance-related business	3
			ITOCHU Capital Securities, Ltd.	100.0	Structuring and distribution of investment products	3
		FX PRIME Corporation	55.0	Online foreign exchange brokerage	3	
		ITOCHU Property Development, Ltd.	99.8	Development and sale of housing (apartments, condominiums, and homes)	3	
		ITOCHU HOUSING Co., Ltd.	100.0	Real estate agent and property consultant	3	
		ITOCHU Urban Community Ltd.	100.0	Operation and management of real estate property	3	
		ITOHPIA HOME Co., Ltd.	100.0	Planning and construction of homes	3	
		ITOCHU Orico Insurance Services Co., Ltd.	65.0	Insurance agency	3	
		I&T Risk Solutions Co., Ltd.	62.8	Insurance broking services and risk consulting	3	
		Naigai Travel Service Co., Ltd.	100.0	Travel agency	3	
		ITC Investment Partners Corporation*1	98.5	Asset management business	3	
		AD Investment Management Co., Ltd.	68.9	Asset management company of Advance Residence Investment Corporation	3	
		■ ITOCHU LOGISTICS CORP.*2	99.0	Comprehensive logistics services	3	
		Overseas	ITOCHU Finance (Europe) PLC (U.K.)	100.0	Proprietary financial investment and development of new financial business in Europe	2
		ITOCHU Finance (Asia) Ltd. (Hong Kong S.A.R., China)	100.0	Proprietary financial investment and development of new financial business in Asia	2	
		ITOCHU Financial Services, Inc. (U.S.A.)	100.0	Proprietary financial investment and development of new financial business in North America	12	
		COSMOS SERVICES CO., LTD. (Hong Kong S.A.R., China)	100.0	Consulting and broking of insurance and reinsurance	3	
		COSMOS SERVICES (AMERICA) INC. (U.S.A.)	100.0	Consulting and broking of insurance	12	
		SIAM COSMOS SERVICES CO., LTD. (Thailand)	80.0	Consulting and broking of insurance	12	
		EURASIA LOGISTICS LTD.(Hungary)*3	70.7	Transportation and warehousing	12	
		Beijing Pacific Logistics Co., Ltd. (China)*4	100.0	Logistics business in China	12	
		Guangzhou Global Logistics Corp. (China)	77.7	Warehousing and trucking	12	

\*1 On April 1, 2009, the name of TAKMA Capital Corporation was changed to ITC Investment Partners Corporation.

\*2 On January 1, 2010, the name of i-LOGISTICS CORP. was changed to ITOCHU LOGISTICS CORP.

\*3 On April 1, 2009, the name of EURASIA SPED Kft. was changed to EURASIA LOGISTICS LTD.

\*4 On June 1, 2010, the name of Beijing Pacific Logistics Co., Ltd. was changed to ITOCHU LOGISTICS (CHINA) CO., LTD.

■ : Subsidiary changed from associates in the fiscal year ended March 2010

☐ : Newly consolidated subsidiaries in the fiscal year ended March 2010



	Name	Voting Shares (%)	Operations	Fiscal Year-End Month	
Associates	Domestic	CENTRAL ENGINEERING & CONSTRUCTION Co., Ltd.	50.0	Engineering and ventilation construction	3
		MINAMI AOYAMA Apartment Co., Ltd.	25.0	Leasing and operation of rental residences	3
		CENTURY 21 REAL ESTATE OF JAPAN LTD.	49.7	Headquarters of real estate franchise system	3
		Famima Credit Corporation	32.5	Credit card business	2
		POCKETCARD Co., Ltd.	23.4	Credit card business	2
		Orient Corporation	32.0	Consumer credit, credit card business	3
		Superex Corporation	41.9	Logistics center	3
		eGuarantee, Inc.	31.7	Account Receivables protection services for general corporations and financial institutions	3
	Overseas	P.T. MALIGI PERMATA INDUSTRIAL ESTATE (Indonesia)	50.0	Development, sale, and management of industrial parks	12
		VIETNAM HI-TECH TRANSPORTATION CO., LTD. (Vietnam)	20.0	Port operation and inland transportation in Vietnam	12
	TINGTONG (CAYMAN ISLANDS) HOLDINGS CORP. (Cayman Islands, British West Indies)	50.0	Management of logistics in China	12	

### Headquarters

Subsidiaries	Domestic	Century Medical, Inc.	100.0	Import and sale of medical equipment	3
		Healthcare-Tech Corporation	100.0	Distribution service and wholesale of medical devices and medical products	3
		ACRONET Corp.	100.0	CRO business	3
		Wellness Communications Corporation	100.0	Healthcare administration service	3
		IML Corporation	100.0	CSO business, PET center business	3
		Ecosystem Japan Co., Ltd.	84.7	Sales and installation of photovoltaic systems and eco-sensitive products	3
Overseas		ITOCHU TREASURY CENTRE ASIA PTE. LTD. (Singapore)	100.0	Financial services	3
		ITOCHU TREASURY CENTRE EUROPE PLC (U.K.)	100.0	Financial services	12
		Solar Depot, LLC (U.S.A.)	100.0	Photovoltaic system integrator	12
		SolarNet, LLC (U.S.A.)	85.0	Photovoltaic system integrator	12
Associates	Domestic	GOODMAN Co., Ltd.	36.8	Import, development, manufacturing, and sale of medical equipment	6
		Japan Medical Dynamic Marketing Inc.	30.0	Import, development, manufacturing, and sale of medical equipment	5
		Medical Collective Intelligence Co., Ltd.	41.5	Marketing support for medical and pharmaceutical companies	12
	Overseas	Greenvision Ambiente Photo-Solar S.R.L. (Italy)	43.0	Photovoltaic system integrator	12
	Enolia Solar Systems S.A. (Greece)	40.4	Photovoltaic system integrator	12	
	Scatec Solar AS (Norway)	37.5	Photovoltaic system integrator	12	

### Headquarters, Overseas Trading Subsidiaries and their Subsidiaries

	ITOCHU International Inc. (U.S.A.)	100.0	Wholesale and investment	12
	Telerent Leasing Corporation (U.S.A.)	100.0	Distribution and lease of televisions to hotels and hospitals	12
	Master-Halco, Inc. (U.S.A.)	100.0	Manufacture and distribution of fence materials	12
	Enprotech Corp. (U.S.A.)	100.0	Maintenance and repair of industrial machinery in automotive, steel, and bottling industries	12
	ITOCHU Europe PLC (U.K.)	100.0	Wholesale and investment	12
	ITOCHU Singapore Pte, Ltd. (Singapore)	100.0	Wholesale and investment	3
	ITOCHU Korea LTD. (Korea)	100.0	Wholesale and investment	12
	ITOCHU (Thailand) Ltd. (Thailand)	100.0	Wholesale and investment	3
	ITOCHU Hong Kong Ltd. (Hong Kong S.A.R., China)	100.0	Wholesale and investment	3
	ITOCHU Latin America, S.A. (Panama)	100.0	Wholesale and investment	12
	ITOCHU BRASIL S.A. (Brazil)	100.0	Wholesale and investment	12
	ITOCHU MIDDLE EAST FZE (U.A.E.)	100.0	Wholesale and investment	3
	ITOCHU Australia Ltd. (Australia)	100.0	Wholesale and investment	3
	ITOCHU (China) Holding Co., Ltd. (China)	100.0	Wholesale and investment	12
	Beijing ITOCHU-Huatang Comprehensive Processing Co., Ltd. (China)	90.0	Reprocessing, sorting, packaging, and shipping of products in the apparel, food, and living categories	12
	ITOCHU TAIWAN CORPORATION (Taiwan)	100.0	Wholesale and investment	3

■ : Subsidiary changed from associates in the fiscal year ended March 2010

□ : Newly consolidated subsidiaries in the fiscal year ended March 2010