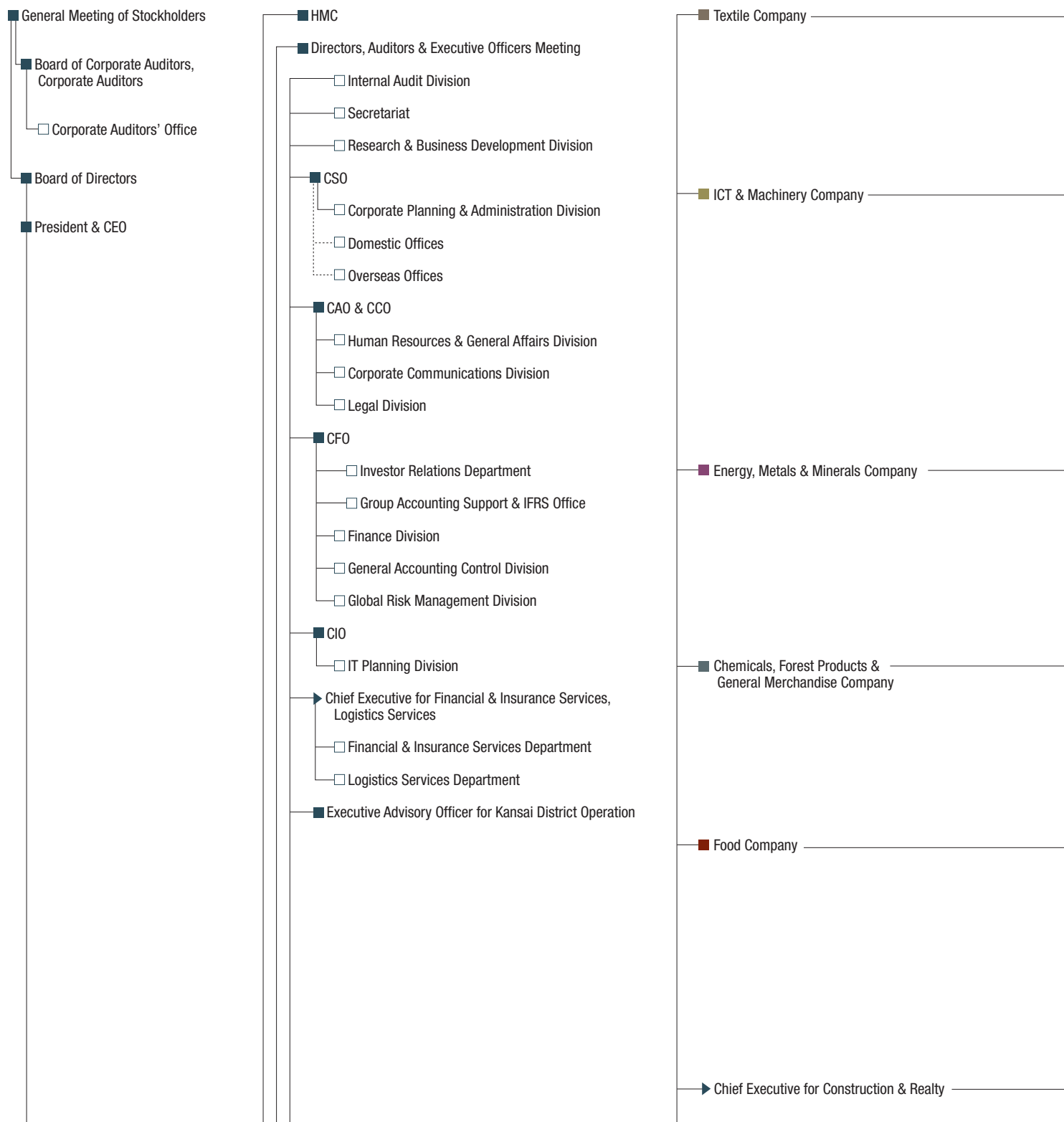


Operational Structure

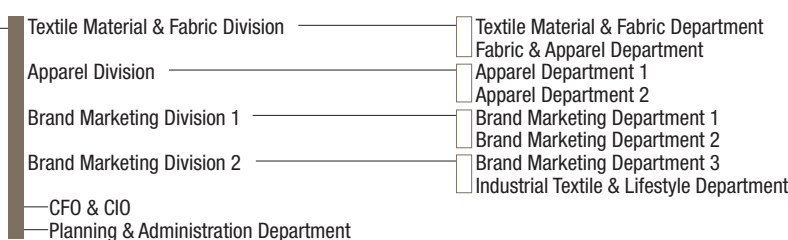
Organizational Structure

(As of July 1, 2011)

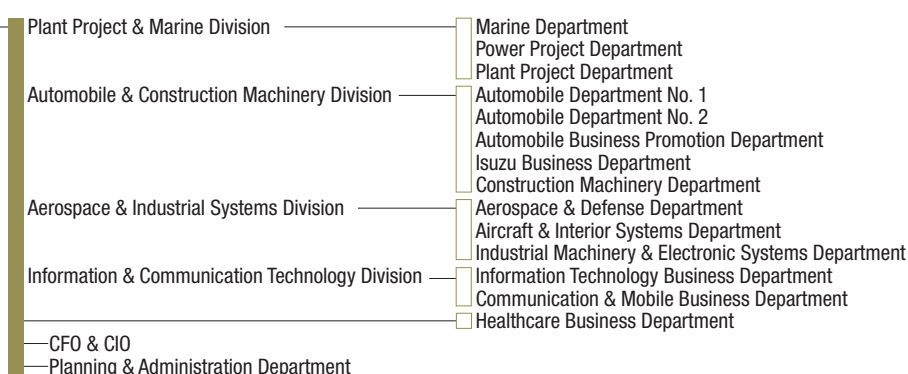


HMC : Headquarters Management Committee
 CSO : Chief Strategy Officer
 CAO : Chief Administrative Officer

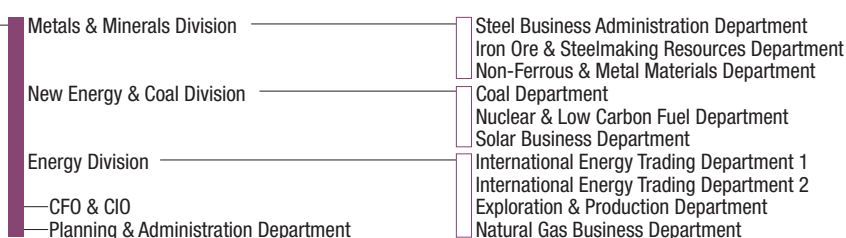
CCO : Chief Compliance Officer
 CFO : Chief Financial Officer
 CIO : Chief Information Officer



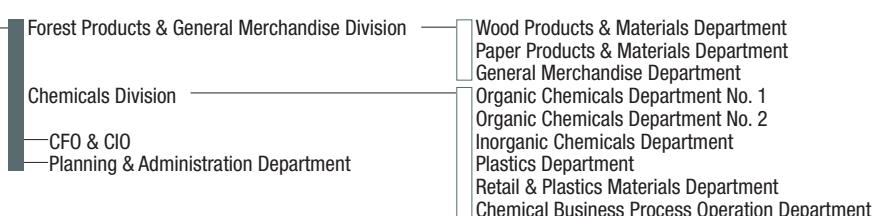
Textile Company	
Number of Employees	
Consolidated	10,887
Non-consolidated	386
Number of Subsidiaries and Associates	
Domestic	23
Overseas	16



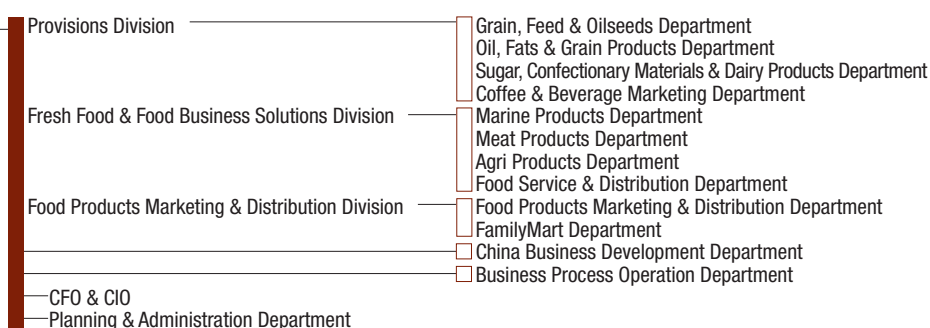
ICT & Machinery Company	
Number of Employees	
Consolidated	20,672
Non-consolidated	657
Number of Subsidiaries and Associates	
Domestic	45
Overseas	50



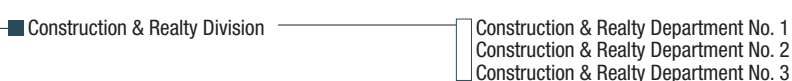
Energy, Metals & Minerals Company	
Number of Employees	
Consolidated	4,706
Non-consolidated	309
Number of Subsidiaries and Associates	
Domestic	15
Overseas	22



Chemicals, Forest Products & General Merchandise Company	
Number of Employees	
Consolidated	9,894
Non-consolidated	297
Number of Subsidiaries and Associates	
Domestic	22
Overseas	46



Food Company	
Number of Employees	
Consolidated	7,451
Non-consolidated	386
Number of Subsidiaries and Associates	
Domestic	23
Overseas	27



Construction & Realty Division	
Number of Employees	
Consolidated	1,050
Non-consolidated	120
Number of Subsidiaries and Associates	
Domestic	14
Overseas	6

Others	
Number of Employees	
Consolidated	7,975
Non-consolidated	2,146
Number of Subsidiaries and Associates	
Domestic	17
Overseas	67

Total	
Number of Employees	
Consolidated	62,635
Non-consolidated	4,301
Number of Subsidiaries and Associates	
Domestic	159
Overseas	234

* The numbers of employees, subsidiaries, and associates are as of March 31, 2011.

* Operational structure information of the number of employees, subsidiaries, and associates (Division Company, etc.) is as of April 1, 2011.

* The number of consolidated employees is based on actual working employees excluding temporary staff.

* Others of the number of non-consolidated employees includes a total of 1,272 employees: employees temporary relocated to other companies (domestic 632, overseas 298), employees and trainees assigned to overseas posts (342).

* The criteria to count group companies is changed so that the number of companies directly invested by ITOCHU or its overseas trading subsidiaries are shown above.

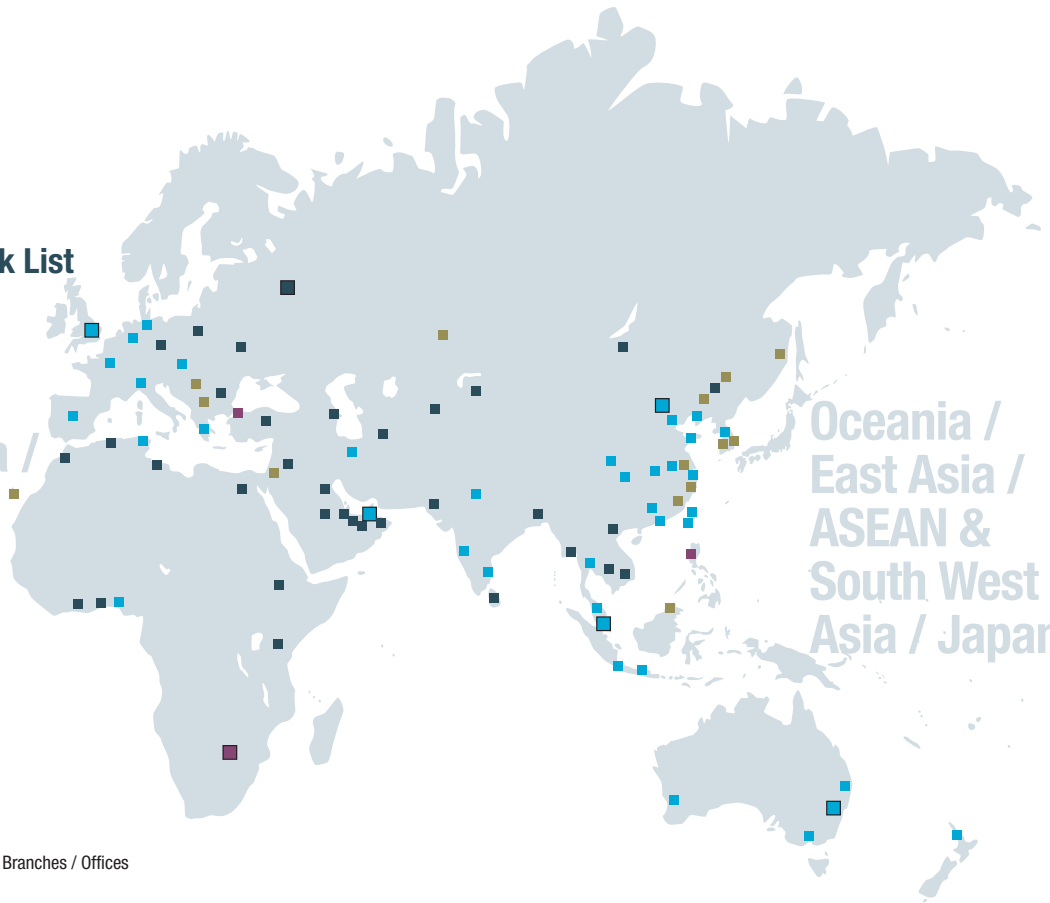
Global Network / Bank List

(As of July 1, 2011)

Global Network

Europe / Africa /
Middle East /
CIS

Oceania /
East Asia /
ASEAN &
South West
Asia / Japan



- Overseas Regional Headquarters
- Overseas Trading Subsidiaries and their Branches / Offices
- Overseas Branches
- Overseas Liaison Offices
- Others

North America / Latin America

North America

ITOCHU International Inc.
22nd and 23rd Floors, Bank of America Plaza, 335
Madison Avenue, New York
N.Y. 10017, U.S.A.
Telephone : 1-212-818-8000
Facsimile : 1-212-818-8543
■ New York, Chicago, San Francisco,
Los Angeles, Washington, Houston, Portland,
Vancouver, Mexico City

Latin America

ITOCHU BRASIL S.A.
Av. Paulista 37
19 andar, Vila Mariana,
São Paulo CEP 01311-902, BRAZIL
Telephone : 55-11-3170-8501
Facsimile : 55-11-3170-8549
■ São Paulo, Rio de Janeiro, Panama, Buenos Aires,
Bogota, Santiago, Caracas, Quito
■ Lima

Europe / Africa / Middle East / CIS

Europe

ITOCHU Europe PLC
The Broadgate Tower 20 Primrose Street,
London EC2A 2EW, U.K.
Telephone : 44-20-7947-8000
Facsimile : 44-20-7947-8240/8241
■ London, Düsseldorf, Hamburg, Paris, Milano, Madrid,
Athens, Budapest, Tunis
■ Alger, Casablanca, Praha, Bucharest, Warszawa

Africa

ITOCHU Corporation, Johannesburg Branch
2nd Floor Block No. 9, Fourways Golf Park, Roos Street,
Fourways, 2055, Johannesburg, SOUTH AFRICA
Telephone : 27-11-465-0030
Facsimile : 27-11-465-0635/0604
■ Lagos
■ Johannesburg
■ Abidjan, Accra, Nairobi, Addis Ababa

Middle East

ITOCHU MIDDLE EAST FZE
LOB 12 - Office No. 119 & 121, P.O.Box 61422, Jebel
Ali Free Zone, Dubai, U.A.E.
Telephone : 971-4-302-0000
Facsimile : 971-4-335-5321
■ Dubai, Tehran
■ Dubai, Istanbul
■ Cairo, Amman, Ankara, Riyadh, Dammam, Kuwait,
Muscat, Doha, Tripoli, Karachi, Abu Dhabi

CIS

ITOCHU Corporation, Moscow Representative Office
Savvinskaya Office Building, 9th Floor, Savvinskaya
Nab., 15, Moscow, 119435, RUSSIAN FEDERATION
Telephone : 7-495-961-1456
Facsimile : 7-495-961-1447/1448
■ Moscow, Almaty, Kiev, Ashgabat, Tashkent, Baku

Oceania / East Asia / ASEAN & South West Asia / Japan

Oceania

ITOCHU Australia Ltd.
Level 29, Grosvenor Place, 225 George Street, Sydney,
N.S.W. 2000, AUSTRALIA
Telephone : 61-2-9239-1500
Facsimile : 61-2-9241-3955
■ Sydney, Melbourne, Perth, Brisbane, Auckland

East Asia

ITOCHU (China) Holding Co., Ltd.
Room 501, 5/f. No. 2 Office Building,
China Central Place, No. 79, Jian Guo
Road, Chaoyang District, Beijing,
THE PEOPLE'S REPUBLIC OF CHINA
(ZIP code: 100025)
Telephone : 86-10-6599-7000
Facsimile : 86-10-6599-7111
■ Beijing, Shanghai, Dalian, Tianjin, Qingdao,
Chongqing, Hong Kong, Guangzhou, Nanjing,
Sichuan, Wuhan, Taipei, Kaohsiung, Seoul
■ ChangChun, Ulaanbaatar

ASEAN & South West Asia

ITOCHU Singapore Pte., Ltd.
9 Raffles Place, #41-01 Republic Plaza, SINGAPORE
048619
Telephone : 65-6230-0400
Facsimile : 65-6230-0560
■ Singapore, Kuala Lumpur, Jakarta, Surabaya,
Bangkok, New Delhi, Mumbai, Chennai
■ Kuala Lumpur, Manila
■ Jakarta, Hanoi, Ho Chi Minh City, Yangon, Phnom
Penh, Colombo, Dhaka



Japan

Headquarters
Tokyo

5-1, Kita-Aoyama 2-chome
Minato-ku, Tokyo 107-8077, Japan
Telephone : 81-3-3497-2121
Facsimile : 81-3-3497-4141

Osaka (from August, 2011)
1-3, Umeda 3-chome
Kita-ku, Osaka 530-8448, Japan
Telephone : 81-6-7638-2121
Facsimile : 81-6-7638-3220

Nagoya, Kyushu, Chugoku, Hokkaido, Tohoku, Hokuriku, Toyama



Bank List

ITOCHU has financial transactions with the following banks.

North America

Citibank, N.A.
JPMorgan Chase Bank
Bank of America, N.A.
Canadian Imperial Bank of Commerce
Comerica Bank
Wells Fargo Capital Finance

Latin America

Grupo Financiero Banamex, S.A. de C.V.
Helm Bank S.A.

Europe & Africa

Credit Agricole
Standard Chartered Bank
BNP Paribas
ING Bank N.V.
The Royal Bank of Scotland plc
Societe Generale
Barclays Bank PLC
Deutsche Bank
Intesa Sanpaolo S.p.A.
Investec Bank Limited
Rabobank Nederland
The Standard Bank of South Africa Limited
Unicredit

Middle East

SAMBA Financial Group
Union National Bank

Oceania

Australia and New Zealand Banking Group Limited
National Australia Bank Limited
Westpac Banking Corporation

Asia

The Hongkong and Shanghai Banking Corporation Limited
Bangkok Bank Public Company Limited
Bank of China
Bank of Communications
CIMB Thai Bank Public Company Limited
Industrial and Commercial Bank of China
Kasikornbank Public Company Limited
Malayan Banking Berhad
RHB Bank Berhad

Japan

Mizuho Corporate Bank, Ltd.
Sumitomo Mitsui Banking Corporation
The Bank of Tokyo-Mitsubishi UFJ, Ltd.
The Sumitomo Trust and Banking Co., Ltd.
Mitsubishi UFJ Trust and Banking Corporation
Mizuho Trust & Banking Co., Ltd.
The Chuo Mitsui Trust and Banking Company, Limited
Development Bank of Japan
Japan Finance Corporation,
Japan Bank for International Cooperation
Shinkin Central Bank
The Norinchukin Bank
Aozora Bank, Ltd.
Shinsei Bank, Ltd.
Resona Bank, Limited

Major Subsidiaries and Associated Companies

Individual subsidiary and associated company information as of March 31, 2011 and operational structure information (Division Company, etc.) as of April 1, 2011

	Name	Voting Shares (%)	Operations	Fiscal Year-End Month		
Textile Company						
Subsidiaries	Domestic	ROY-NE CO., LTD.	99.9	Manufacture and wholesale of woven and knitted products	3	
		SANKEI CO., LTD.	90.5	Wholesale of garment materials	2	
		JAVA HOLDINGS CO., LTD.	65.0	Holding company of retail of ladies' & kids' apparel brand	3	
		LEILIAN CO., LTD.	61.1	Retail of women's apparel	3	
		ITOCHU MODEPAL CO., LTD.	100.0	Manufacture and wholesale of apparel	3	
		UNICO CORPORATION	100.0	Manufacture and wholesale of uniforms	3	
		JOI'X CORPORATION	100.0	Manufacture and wholesale of men's apparel	7	
		BMI HOLDINGS CO., LTD.	100.0	Holding company of brand business	3	
		MAGASseek Corporation	64.4	Retail web site of fashion apparel by PC and mobile	3	
		SCABAL JAPAN Co., Ltd.	80.0	Import and sale of SCABAL brand products	3	
		ITOCHU FASHION SYSTEM Co., Ltd.	100.0	Comprehensive consulting in the fashion industry	3	
		ITOCHU HOME FASHION CORPORATION	97.9	Manufacture and wholesale of home furnishings	3	
		CI Shopping Service Co., Ltd.	100.0	Sale of everyday items aimed at ITOCHU Group employees and families	3	
		CI TEXTILE SERVICE CO., LTD.	100.0	Outsourcing of administrative duties for delivery and accounting, production control and quality control	3	
		Overseas	ITOCHU Textile Prominent (ASIA) Ltd. (Hong Kong S.A.R., China)	100.0	Wholesale of materials, yarns, textile, and apparel	3
		PROMINENT (VIETNAM) CO., LTD. (Vietnam)	100.0	Quality control of textile and apparel	12	
		UNIMAX SAIGON CO., LTD. (Vietnam)	80.0	Manufacture of uniforms	12	
		ITOCHU TEXTILE (CHINA) CO., LTD. (China)	100.0	Production control and wholesale of textile materials, fabrics, and apparel	12	
Associates	Domestic	MARUKO CO., LTD.	25.1	Manufacture and wholesale of lady's underwear, etc.	8	
		DESCENTE, LTD.	25.7	Manufacture and wholesale of sportswear, etc.	3	
		DEAN & DELUCA JAPAN Co., Ltd.	20.4	Operation of cafeteria chain and other new business	2	
		T.KAWABE & CO., LTD.	25.3	Manufacture and wholesale of handkerchiefs, scarves, and other accessory goods	3	
		Watakayu Seimoa Corporation	25.0	Total outsourcing service mainly linen supply for medical & welfare institutions	6	
		AYAHA CORPORATION	33.5	Manufacture of tire cords, etc.	3	
		Overseas	Thai shikibo co., ltd. (Thailand)	30.0	Manufacture of cotton yarn	12
		<input type="checkbox"/> SUNRISE (SHENGZHOU) TEXTILES CO., LTD. (China)	25.0	Manufacture and wholesale of shirting fabric	12	
		<input type="checkbox"/> SUNRISE (SHENGZHOU) KNITS CO., LTD. (China)	25.0	Manufacture and wholesale of knitting goods	12	
			Dalian Yawen Underwear Co., Ltd. (China)	28.0	Manufacture of women's underwear	12
			Paul Smith Group Holdings Limited (U.K.)	40.4	Holding company of Paul Smith Group	6
			Shanshan Group Co., Ltd. (China)	28.0	Holding company of Shanshan Group, operating a textile business, electronic components, etc.	12

Newly consolidated subsidiaries in the fiscal year ended March 2011

ICT & Machinery Company

Subsidiaries	Domestic	ITOCHU Plantech Inc.	100.0	Export and import of small-to-medium-scale plant and equipment and domestic environmental and energy solution businesses	3	
		IMECS Co., Ltd.	100.0	Ownership and operation of ships, chartering, ship machinery, secondhand ships, and administration management of overseas shipping companies	3	
		ITOCHU Automobile Corporation	100.0	Export / import and inter-third trade of car parts	3	
		ITOCHU CONSTRUCTION MACHINERY CO., LTD.	100.0	Sales and rental of construction machinery	3	
		ITOCHU AVIATION, CO., LTD.	100.0	Import / export and wholesale of aircraft, aircraft part, and related equipment	3	
		ITOCHU MACHINE-TECHNOS CORPORATION *1	100.0	Import / export and wholesale of industrial machinery	3	
		ITOCHU Techno-Solutions Corporation	54.1	Sales, maintenance and support of computers and network systems; commissioned software development; information processing services	3	
		Excite Japan Co., Ltd.	57.9	Internet information service	3	
		ITC NETWORKS CORPORATION	60.3	Distribution and retail business of mobile phones	3	
		Century Medical, Inc.	100.0	Import and sale of medical equipment	3	
		ACRONET Corp.	100.0	CRO business	3	
		IML Corporation	100.0	CSO business, PET center business	3	
		Overseas	I-Power Investment Inc. (U.S.A.)	100.0	Investment company in the power industry	12
			Tyr Energy, Inc. (U.S.A.)	100.0	Power generation business in North America	12
			NAES Corporation (U.S.A.)	100.0	Power plant operation and maintenance services provider for independent power producers and utilities	12
			MCL Group Limited (U.K.)	100.0	Warehousing and financing of motor vehicles	3
			IM AUTOTRADE HOLDING G.m.b.H (Austria)	100.0	Wholesale and inter-third trade of motor vehicles and motorcycles	12
			ITOCHU Automobile America Inc. (U.S.A.)	100.0	Retail, distribution, and trading of motor vehicles	3
			Auto Investment Inc. (U.S.A.)	100.0	Retail of motor vehicles	3
			PT. SUZUKI Finance Indonesia (Indonesia)	70.0	Automobile finance company	12
		VEHICLES MIDDLE EAST FZCO (U.A.E.)	100.0	Trade finance for motor vehicles	12	
		EURASIA LOGISTICS LTD.(Hungary)	70.7	Transportation and warehousing	12	
		MULTIQUIP INC. (U.S.A.)	100.0	Distribution and manufacturing of light construction equipment and generators	12	
		ITOCHU AirLease B.V. (Netherlands)	100.0	Lease of commercial aircraft	3	

	Name	Voting Shares (%)	Operations	Fiscal Year-End Month	
Associates	Domestic	Malha Gas Investment Co., Ltd.	30.0	Investment in the project for the construction, ownership, and operation of gas pipelines	3
		YANASE & CO., LTD.	22.0	Sales and repair of automobiles	9
		Isuzu Motors Sales Ltd. *2	25.0	Commercial vehicle life cycle business	3
		Century Tokyo Leasing Corporation	20.2	Diversified leasing business, various types of financing, and International business	3
		JAMCO Corporation	33.2	Maintenance of aircraft and manufacture of aircraft interior	3
		SUNCALL CORPORATION	26.9	Manufacture and sales of optical communication devices, electronic devices, and assembly	3
		MYSTAR ENGINEERING CORP.	20.3	Maintenance & engineering service for mechatronics & facilities	3
		■ SPACE SHOWER NETWORKS INC.	37.0	Music channel on cable / satellite television	3
		Asurion Japan K.K.	33.3	Mobile insurance agency	12
		GOODMAN Co., Ltd.	36.8	Import, development, manufacturing, and sale of medical equipment	6
		Japan Medical Dynamic Marketing Inc.	30.0	Import, development, manufacturing, and sale of medical equipment	5
		Overseas			
		SICHUAN GANGHONG ENTERPRISE MANAGEMENT CO., LTD. (China)	40.0	Sales and repair of automobiles	12
		"SUZUKI MOTOR RUS" LLC (Russia)	50.0	Import and Wholesale of motor vehicles, motorcycles and spare parts	12
		Komatsu Southern Africa (Pty) Ltd. (Republic of South Africa)	20.0	Sales and service of construction and mining equipment	3
		PT Hexindo Adiperkasa Tbk (Indonesia)	25.1	Sales and service of construction machinery	3

*1 On April 1, 2010, ITOCHU Sanki Corporation and ITOCHU MECHATRONICS CORPORATION merged to form ITOCHU MACHINE-TECHNOS CORPORATION.

*2 On October 1, 2010, the name of Isuzu Network Co., Ltd. was changed to Isuzu Motors Sales Ltd.

■ Associated company changed from subsidiary in the fiscal year ended March 2011

Energy, Metals & Minerals Company

Subsidiaries	Domestic	ITOCHU ENEX CO., LTD.	53.6	Wholesale of petroleum products and gas	3
		ITOCHU Metals Corporation	100.0	Import / export and wholesale of non-ferrous / light metals, products, and steel scrap, development of recycle business	3
		ITOCHU Oil Exploration Co., Ltd.	100.0	Exploration and production of oil, gas, and other hydrocarbon resources	3
		JB BioEnergy Inc.	100.0	Investment in projects of bioethanol in Brazil	12
		Ecosystem Japan Co., Ltd.	82.7	Sales and installation of photovoltaic systems and eco-sensitive products	3
		Overseas			
		ITOCHU Minerals & Energy of Australia Pty Ltd (Australia)	100.0	Investment and sales in projects of iron ore, coal, and bauxite mining, manufacture of alumina and oil exploration	3
		ITOCHU Oil Exploration (Azerbaijan) Inc. (Cayman Islands, British West Indies)	100.0	Exploration and production of crude oil and gas	12
		ITOCHU PETROLEUM CO., (SINGAPORE) PTE. LTD. (SINGAPORE)	100.0	International trade of crude oil and petroleum products	12
		IPC EUROPE LTD. (U.K.)	100.0	International trade of crude oil and petroleum products	12
Associates	Domestic	Marubeni-Itchu Steel Inc.	50.0	Import / export and wholesale of steel products	3
		NISSHO Petroleum Gas Corporation	25.0	Wholesale of LPG and petroleum products	3
		Japan Ohanet Oil & Gas Co., Ltd.	35.0	Exploration and production of gas and condensate	12
		Brazil Japan Iron Ore Corporation	47.7	Investment in projects of iron ore in Brazil	3
		Overseas			
		Chemoil Energy Limited (Hong Kong S.A.R., China)	37.5	International trade of petroleum products	12
		IPC (USA), Inc. (U.S.A.)	50.0	International trade of crude oil and petroleum products	12
		Enolia Solar Systems S.A. (Greece)	40.4	Photovoltaic system integrator	12
		Scatec Solar AS (Norway)	37.5	Photovoltaic system integrator	12

Operational Structure

	Name	Voting Shares (%)	Operations	Fiscal Year-End Month		
Chemicals, Forest Products & General Merchandise Company						
Subsidiaries	Domestic	ITOCHU Kenzai Corp.	90.8	Wholesale of wood products and building materials	3	
		ITC Green & Water Corp. *3	100.0	Designing and installation of water treatment system, landscape and gardening, and greenery business	3	
		ITOCHU Pulp & Paper Corp.	100.0	Wholesale of paper, paper boards, and various materials	3	
		ITOCHU Ceratech Corp.	100.0	Manufacture and sale of ceramic raw materials and products	3	
		ITOCHU Windows Co., Ltd.	66.0	Manufacture and sale of insulating glass	3	
		ITR Corp.	100.0	Wholesale and retail of tires	3	
		IFA Co., LTD.	100.0	Wholesale of shoes and bags	3	
		ITOCHU CHEMICAL FRONTIER Corporation	100.0	Wholesale of fine chemicals and related raw materials	3	
		ITOCHU PLASTICS INC.	100.0	Development and wholesale of plastics and related products	3	
		C.I. Kasei Co., Ltd.	97.6	Manufacture of PVC pipe and film and related materials	3	
		The Japan Cee-Bee Chemical Co., Ltd.	80.0	Manufacture and processing of metal pretreatment chemicals	3	
		VCJ Corporation	80.0	Wholesale of daily necessities and plastic products for retailers	3	
		Chemical Logitec Co., Ltd.	100.0	Management of chemical storage warehouses and transportation of chemicals and other cargos	3	
		Overseas	CIPA Lumber Co. Ltd. (Canada)	100.0	Manufacture of veneer	12
			Pacific Woodtech Corporation (U.S.A.)	100.0	Manufacture of LVL & I-Joist	12
			PrimeSource Building Products, Inc. (U.S.A.)	100.0	Wholesale of building materials	12
			P. T. ANEKA BUMI PRATAMA (Indonesia)	100.0	Processing of natural rubber	12
			Stapleton's (Tyre Services) Ltd. (U.K.)	100.0	Wholesale and retail of tires	12
			ITOCHU Plastics Pte., Ltd. (Singapore)	100.0	Wholesale of plastic resins	12
			Plastrubion Limited (U.K.)	100.0	Wholesale of synthetic resins	12
		RUBBERNET (ASIA) PTE LTD. (Singapore)	80.0	Sale of crude rubber	12	
		ITOCHU Chemicals America Inc. (U.S.A.)	100.0	Wholesale of chemical products and synthetic resins	12	
		Hangzhou New Huahai Business & Trading Co., Ltd. (China)	85.0	Wholesale of cosmetics and daily goods, and sale of cosmetics, skincare products, toiletry products, and other daily goods	12	
		PTAGENT. CORPORATION (China)	100.0	Wholesale of PTA	12	
Associates	Domestic	Japan Brazil Paper and Pulp Resources Development Co., Ltd.	25.9	Investment in CENIBRA, one of the largest eucalyptus pulp manufacturers in Brazil	3	
		DAIKEN CORPORATION	25.5	Manufacture of building materials and construction parts	3	
		TAKIRON Co., Ltd.	27.7	Manufacture of flat and corrugated plastic sheets	3	
		TOHO EARTHTECH, INC.	34.2	Exploration and production of natural gas and iodine	3	
		Ningbo PTA Investment, Co., Ltd	35.0	Investment in manufacture of PTA in China	3	
		Overseas	DAIKEN NEW ZEALAND LIMITED (New Zealand)	49.0	Manufacture of MDF	3
			SOUTH EAST FIBRE EXPORTS PTY. LTD. (Australia)	37.5	Manufacture of woodchip	12
			THAITECH RUBBER CORPORATION LTD. (Thailand)	33.0	Processing of natural rubber	12
			YOKOHAMA RUSSIA L.L.C. (Russia)	20.0	Wholesale of tires	12
			NARENDRA PLASTIC PVT. LTD. (India)	29.9	Manufacture of plastics bags	3
			SUMIKA POLYMER COMPOUNDS (EUROPE) LTD. (U.K.)	25.0	Sale and manufacture of compound of plastic raw materials	12
			Shanghai Baoling Plastics Co., Ltd. (China)	22.6	Manufacture of plastic products	12
			Shanghai Jinpu Plastic Packaging Material Co., Ltd. (China)	30.0	Manufacture of polypropylene films	12
			Tetra Chemicals (Singapore) Pte. Ltd. (Singapore)	40.0	Sale and manufacture of MTBE (Methyl t-Butyl Ether)	12
			SUMIPEX (THAILAND) CO., LTD. (Thailand)	49.0	Manufacture of PMMA sheet	3
			NCT Holland B.V. (Netherlands)	40.0	Trading and distribution of the plastics materials based on Europe and Middle East	12
			BRUNEI METHANOL COMPANY SDN. BHD. (Brunei)	25.0	Manufacture of methanol in Brunei	12
			TODA AMERICA, INC. (U.S.A.)	50.0	Sale and manufacture of cathode materials for Lithium Ion Batteries	3
			TODA ADVANCED MATERIALS INC. (Canada)	50.0	Sale and manufacture of precursor materials for use in Lithium Ion Batteries cathodes	3
			<input type="checkbox"/> UNICHARM Consumer Products (China) Co., Ltd. (China)	20.0	Production and sales of baby care, feminine care and other products	12

*3 On April 1, 2010, the name of ITOCHU Forestry Corp. was changed to ITC Green & Water Corp.

Newly consolidated subsidiary in the fiscal year ended March 2011

	Name	Voting Shares (%)	Operations	Fiscal Year-End Month	
Food Company					
Subsidiaries	Domestic	ITOCHU Feed Mills Co., Ltd.	85.9	Manufacture and wholesale of compound feeds	3
		ITOCHU Sugar Co., Ltd.	100.0	Manufacture and processing of sugar and by-products	3
		I-FOODS Co., Ltd.	100.0	Import and wholesale of food materials	3
		ITOCHU Rice Corporation	100.0	Wholesale of rice	3
		Japan Nutrition Co., Ltd.	100.0	Manufacture and wholesale of feed and feed additive	3
		Yayoi Foods Co., Ltd.	93.2	Manufacture of frozen prepared foods	3
		ITOCHU Fresh Corporation Inc.	100.0	Processing and wholesale of fish, meat, and agri-products	3
		ITOCHU SHOKUJIN Co., Ltd.	51.7	Wholesale and distribution of foods	3
		NIPPON ACCESS, INC.	93.8	Wholesale and distribution of foods	3
		<input type="checkbox"/> China Foods Investment Corp.	74.1	Business management of Ting Hsin and its group companies	3
Associates	Overseas	OILSEEDS INTERNATIONAL LTD. (U.S.A.)	100.0	Safflower oil manufacture	7
		Quality Technology International, Inc. (QTI) (U.S.A.)	100.0	Develop high added-value feed materials, sell feed additives in USA.	12
	Domestic	Fuji Oil Co., Ltd.	25.7	Integrated manufacturer of cooking oil and soybean protein	3
		Japan Foods Co., Ltd.	40.4	Production of soft drinks	3
		SHIBUSHI SILO CO., LTD.	25.0	Harbor transport and warehousing business	3
		KUMESHIMA SUGAR CO., LTD.	34.8	Production and sales of raw sugar	6
		Prima Meat Packers, Ltd.	39.6	Production and marketing of meat, ham, sausage, and processed foods	3
		KI Fresh Access, Inc.	33.5	Wholesale and distribution of fresh fruits, vegetables, and processed products	3
		SHOW-WA Co., Ltd.	20.0	Wholesale of foods	3
		FamilyMart Co., Ltd.	31.7	Operation of a convenience store chain, using the name FamilyMart, and a franchise system	2
	Overseas	PALMAJU EDIBLE OIL SDN. BHD. (Malaysia)	30.0	Refining of palm oil	12
		CGB ENTERPRISES, INC. (U.S.A.)	50.0	Handling of grain and operation of barges	5
	ASAHI BREWERIES ITOCHU (HOLDINGS) LIMITED (Hong Kong S.A.R., China)	40.0	Holding company of Chinese beer manufacturers	12	
	EGT, LLC (U.S.A.)*4	29.0	Grain terminal business in the west coast of the US	12	
	P. T. ANEKA TUNA INDONESIA (Indonesia)	47.0	Production of canned and pouched tuna	12	
	WINNER FOOD PRODUCTS LTD. (Hong Kong S.A.R., China)	26.0	Manufacture and wholesale of processed foods	12	
	TAIWAN DISTRIBUTION CENTER CO., LTD. (Taiwan)	39.4	Wholesale of foods and sundries	12	
	TING HSIN (CAYMAN ISLANDS) HOLDING CORP. (Cayman Islands, British West Indies)	25.2	Holding company of processed foods manufacturers, food services, and distribution services in China and Taiwan	12	

*4 On April 5, 2010, the name of EGT Development, LLC was changed to EGT, LLC
 Newly consolidated subsidiary in the fiscal year ended March 2011

Construction & Realty Division

Subsidiaries	Domestic	ITOCHU Property Development, Ltd.	99.8	Development and sale of housing (apartments, condominiums, and homes)	3
		ITOCHU HOUSING Co., Ltd.	100.0	Real estate agent and property consultant	3
		ITOCHU Urban Community Ltd.	100.0	Operation and management of real estate property	3
		ITOHPIA HOME Co., Ltd.	100.0	Planning and construction of homes	3
		AD Investment Management Co., Ltd.	66.0	Asset management for Advance Residence Investment Corporation	3
Associates	Domestic	CENTRAL ENGINEERING & CONSTRUCTION Co., Ltd.	50.0	Engineering and ventilation construction	3
		CENTURY 21 REAL ESTATE OF JAPAN LTD.	49.7	Headquarters of real estate franchise system	3

Operational Structure

	Name	Voting Shares (%)	Operations	Fiscal Year-End Month	
Headquarters Business Organization					
Subsidiaries	Domestic	ITOCHU Finance Corporation	99.1	Loan and other finance-related business	3
		ITOCHU Orico Insurance Services Co., Ltd.	65.0	Insurance agency	3
		I&T Risk Solutions Co., Ltd.	91.2	Insurance broking services and risk consulting	3
		ITOCHU LOGISTICS CORP.	99.0	Comprehensive logistics services (3PL, warehousing, trucking, international freight forwarding, customs clearance, and NVOCC)	3
	Overseas	ITOCHU Finance (Asia) Ltd. (Hong Kong S.A.R., China)	100.0	Proprietary financial investment and development of new financial business in Asia	2
		COSMOS SERVICES CO., LTD. (Hong Kong S.A.R., China)	100.0	Consulting and broking of insurance and reinsurance	3
		COSMOS SERVICES (AMERICA) INC. (U.S.A.)	100.0	Consulting and broking of insurance	12
		SIAM COSMOS SERVICES CO., LTD. (Thailand)	100.0	Consulting and broking of insurance	12
		ITOCHU LOGISTICS (CHINA) CO., LTD. (China) ^{*5}	100.0	Comprehensive logistics services (3PL, warehousing, trucking, import/export, customs clearance, and value-added services)	12
		Guangzhou Global Logistics Corp. (China)	77.7	Comprehensive logistics services (3PL, warehousing, trucking, and value-added services)	12
Associates	Domestic	POCKETCARD Co., Ltd.	27.0	Credit card business	2
		Orient Corporation	23.7	Consumer credit, credit card business	3
		Superex Corporation	41.9	Management of logistics center operation	3
		eGuarantee, Inc.	31.7	Account Receivables protection services for general corporations and financial institutions	3
	Overseas	VIETNAM HI-TECH TRANSPORTATION CO., LTD. (Vietnam)	20.0	Port operation and inland transportation in Vietnam	12
		TINGTONG (CAYMAN ISLANDS) HOLDING CORP. (Cayman Islands, British West Indies)	50.0	Comprehensive logistics services in China (3PL, warehousing, trucking, and value-added services)	12

*5 On June 1, 2010, the name of Beijing Pacific Logistics Co., Ltd. was changed to ITOCHU LOGISTICS (CHINA) CO., LTD.

Headquarters

Subsidiaries	Domestic	ITOCHU Capital Securities, Ltd.	100.0	Structuring and distribution of investment products	3
		FX PRIME Corporation	56.4	Online foreign exchange brokerage	3
		ITC Investment Partners Corporation	98.5	Asset management business	3
	Overseas	ITOCHU Finance (Europe) PLC (U.K.)	100.0	Proprietary financial investment and development of new financial business in Europe	2
		ITOCHU TREASURY CENTRE ASIA PTE. LTD. (Singapore)	100.0	Financial services	3
		ITOCHU TREASURY CENTRE EUROPE PLC (U.K.)	100.0	Financial services	12
		ITOCHU Treasury Center Americas Inc. (U.S.A.)	100.0	Financial services	12

Headquarters, Overseas Trading Subsidiaries and their Subsidiaries

	ITOCHU International Inc. (U.S.A.)	100.0	Wholesale and investment	12
	Telerent Leasing Corporation (U.S.A.)	100.0	Distribution and lease of televisions to hotels and hospitals	12
	Master-Halco, Inc. (U.S.A.)	100.0	Manufacture and distribution of fence materials	12
	Enprotech Corp. (U.S.A.)	100.0	Maintenance and repair of industrial machinery in automotive, steel, and bottling industries	12
	ITOCHU Europe PLC (U.K.)	100.0	Wholesale and investment	12
	ITOCHU Singapore Pte., Ltd. (Singapore)	100.0	Wholesale and investment	3
	ITOCHU Korea LTD. (Korea)	100.0	Wholesale and investment	12
	ITOCHU (Thailand) Ltd. (Thailand)	100.0	Wholesale and investment	3
	ITOCHU Hong Kong Ltd. (Hong Kong S.A.R., China)	100.0	Wholesale and investment	3
	ITOCHU Latin America, S.A. (Panama)	100.0	Wholesale and investment	12
	ITOCHU BRASIL S.A. (Brazil)	100.0	Wholesale and investment	12
	ITOCHU MIDDLE EAST FZE (U.A.E.)	100.0	Wholesale and investment	3
	ITOCHU Australia Ltd. (Australia)	100.0	Wholesale and investment	3
	ITOCHU (China) Holding Co., Ltd. (China)	100.0	Wholesale and investment	12
	Beijing ITOCHU-Huatang Comprehensive Processing Co., Ltd. (China)	90.0	Reprocessing, sorting, packaging, and shipping of products in the apparel, food, and living categories	12
	ITOCHU TAIWAN CORPORATION (Taiwan)	100.0	Wholesale and investment	3