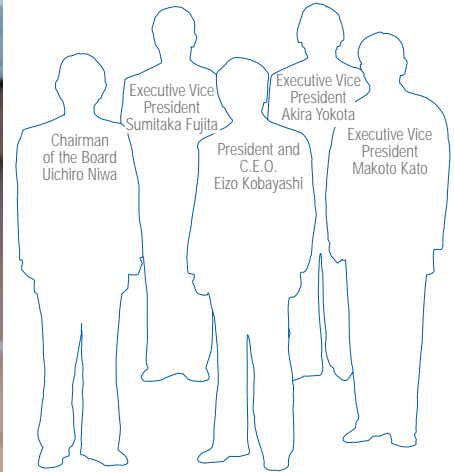




## Corporate Officers



### Directors

#### Chairman of the Board

##### Uichiro Niwa

1962 Joined ITOCHU Corporation  
2004 Chairman

#### President and C.E.O.

##### Eizo Kobayashi

1972 Joined ITOCHU Corporation  
2004 President and C.E.O.

#### Executive Vice Presidents

##### Makoto Kato

Chief Operating Officer, Division  
Companies Operation  
1964 Joined ITOCHU Corporation  
2001 Executive Vice President

##### Sumitaka Fujita

Chief Administration Officer;  
Chief Financial Officer;  
Chief Compliance Officer;  
Chief Information Officer  
1965 Joined ITOCHU Corporation  
2001 Executive Vice President

##### Akira Yokota

President, Energy, Metals & Minerals  
Company  
1967 Joined ITOCHU Corporation  
2003 Executive Vice President

#### Senior Managing Directors

##### Yoichi Okuda

President, Aerospace, Electronics &  
Multimedia Company  
1970 Joined ITOCHU Corporation  
2004 Senior Managing Director

##### Kouhei Watanabe

President, Food Company  
1971 Joined ITOCHU Corporation  
2004 Senior Managing Director

#### Managing Directors

##### Akira Kodera

President, Finance, Realty, Insurance &  
Logistics Services Company  
1970 Joined ITOCHU Corporation  
2004 Managing Director

##### Jiro Takemori

President, Machinery Company  
1971 Joined ITOCHU Corporation  
2004 Managing Director

##### Toshihito Tamba

President, Chemicals, Forest Products &  
General Merchandise Company  
1972 Joined ITOCHU Corporation  
2003 Managing Director

##### Shigeki Nishiyama

Chief Corporate Planning Officer;  
General Manager, Corporate Planning  
& Administration Division  
1974 Joined ITOCHU Corporation  
2004 Managing Director

##### Masahiro Okafuji

President, Textile Company  
1974 Joined ITOCHU Corporation  
2004 Managing Director

### Board of Corporate Auditors

#### Corporate Auditors

##### Tsutomu Miyakushi

1968 Joined ITOCHU Corporation  
2003 Standing Corporate Auditor

##### Masahiro Asano

1970 Joined ITOCHU Corporation  
2001 Standing Corporate Auditor

##### Nobuyoshi Umeno

1968 Joined ITOCHU Corporation  
2004 Standing Corporate Auditor

##### Katsuhiko Kondo

1996 President, Dai-Ichi Kangyo Bank,  
Limited (currently Mizuho Financial  
Group, Inc.)  
1997 Corporate Advisor  
2000 Corporate Auditor, ITOCHU Corporation

##### Haruo Sakaguchi

1989 Vice Chairman, Japan Federation of Bar  
Association  
1990 Chairman, Osaka Bar Association  
2001 Chairman, Osaka Public Bid Monitoring  
Committee  
2003 Corporate Auditor, ITOCHU Corporation

## Executive Officers

### Managing Executive Officers

#### Takeshi Tanimura

General Manager of Nagoya Area;  
General Manager, Planning &  
Development Dept.  
1999 Joined ITOCHU Corporation  
2001 Managing Executive Officer

#### Akihisa Matsumoto

Executive Vice President, Energy, Metals  
& Minerals Company  
1970 Joined ITOCHU Corporation  
2004 Managing Executive Officer

#### Satoshi Tanioka

Chief Executive for European Operation;  
C.E.O., ITOCHU Europe PLC.;  
C.E.O., ITOCHU Deutschland GmbH.  
1971 Joined ITOCHU Corporation  
2004 Managing Executive Officer

### Executive Officers

#### Masayoshi Araya

General Manager for Oceania;  
Managing Director & C.E.O., ITOCHU  
Australia Ltd.  
1968 Joined ITOCHU Corporation  
2001 Executive Officer

#### Etsuro Nakanishi

Executive Vice President, Textile  
Company;  
Chief Operating Officer, Textile Division  
1971 Joined ITOCHU Corporation  
2001 Executive Officer

#### Masao Kasama

Deputy Chief Officer for International  
Operation (Asian Region)  
1971 Joined ITOCHU Corporation  
2001 Executive Officer

#### Kiyoshi Sasaki

General Manager, Finance Division  
1969 Joined ITOCHU Corporation  
2002 Executive Officer

#### Toru Ota

General Manager, Secretariat Division  
1970 Joined ITOCHU Corporation  
2002 Executive Officer

#### Yoshio Akamatsu

Executive Vice President & Chief  
Administrative Officer, ITOCHU  
International Inc.;  
President, ITOCHU Canada Ltd.  
1974 Joined ITOCHU Corporation  
2002 Executive Officer

#### Masahiro Nakagawa

General Manager, Human Resources  
Division  
1974 Joined ITOCHU Corporation  
2002 Executive Officer

#### Yosuke Minamitani

Chief Operating Officer, Chemicals  
Division  
1974 Joined ITOCHU Corporation  
2002 Executive Officer

#### Shigeharu Tanaka

Chief Operating Officer, Food Products  
Marketing & Distribution Division  
1974 Joined ITOCHU Corporation  
2002 Executive Officer

#### Tsuneharu Takeda

Chief Officer for Kansai District  
Operation  
1967 Joined ITOCHU Corporation  
2003 Executive Officer

#### Saichi Nakazawa

Senior Vice President, Energy, Metals &  
Minerals Company  
2003 Joined ITOCHU Corporation  
2003 Executive Officer

#### Hiroshi Kitamura

President & C.E.O., ITOCHU  
International Inc.  
1971 Joined ITOCHU Corporation  
2003 Executive Officer

#### Nobuo Kuwayama

General Manager for China;  
Chairman & C.E.O., ITOCHU  
SHANGHAI Ltd.  
1971 Joined ITOCHU Corporation  
2003 Executive Officer

#### Minoru Akimitsu

General Manager, IT Planning Division  
1973 Joined ITOCHU Corporation  
2003 Executive Officer

#### Takanobu Furuta

Chief Operating Officer, Plant & Project  
Division  
1973 Joined ITOCHU Corporation  
2003 Executive Officer

#### Yoshihisa Aoki

Chief Operating Officer, Provisions  
Division  
1974 Joined ITOCHU Corporation  
2003 Executive Officer

#### Hiroo Inoue

Chief Operating Officer, IT &  
Telecommunication Division  
1975 Joined ITOCHU Corporation  
2003 Executive Officer

#### Yoshihisa Suzuki

Chief Operating Officer, Aerospace &  
Electronic Systems Division  
1979 Joined ITOCHU Corporation  
2003 Executive Officer

#### Yoshio Matsumi

General Manager, Innovative  
Technology Business Development  
Office  
1969 Joined ITOCHU Corporation  
2004 Executive Officer

#### Kazutomo Shima

Senior Vice President, Textile Company;  
Chief Operating Officer, Apparel  
Division  
1971 Joined ITOCHU Corporation  
2004 Executive Officer

#### Yoichi Kobayashi

Chief Operating Officer, Metals, Mineral  
Resources & Coal Division  
1973 Joined ITOCHU Corporation  
2004 Executive Officer

#### Tadayuki Seki

Chief Financial Officer, Food Company  
1973 Joined ITOCHU Corporation  
2004 Executive Officer

#### Akitomo Noto

Chief Operating Officer, Fresh Food &  
Food Business Solutions Division  
1973 Joined ITOCHU Corporation  
2004 Executive Officer

#### Toyoshige Yamada

Chief Operating Officer, Industrial Textile  
& Lifestyle Division  
1973 Joined ITOCHU Corporation  
2004 Executive Officer

#### Taizo Hamaguchi

Senior Vice President, Food Company  
1973 Joined ITOCHU Corporation  
2004 Executive Officer

#### Nobuyuki Kaneko

Chief Operating Officer, Media Business  
Division  
1974 Joined ITOCHU Corporation  
2004 Executive Officer

#### Kazutoshi Maeda

General Manager, Legal Division  
1974 Joined ITOCHU Corporation  
2004 Executive Officer

#### Kenichi Kamiyoshi

Chief Operating Officer, Textile Material  
Division  
1974 Joined ITOCHU Corporation  
2004 Executive Officer

#### Shuichi Morozumi

Chief Operating Officer, Forest Products  
& General Merchandise Division  
1975 Joined ITOCHU Corporation  
2004 Executive Officer

#### Takeyoshi Ide

Chief Operating Officer, Automobile  
Division  
1975 Joined ITOCHU Corporation  
2004 Executive Officer

#### Takao Shiomi

Chief Operating Officer, Logistics  
Services Division  
1975 Joined ITOCHU Corporation  
2004 Executive Officer

Note: The above biographies are lists of the year of employment, except corporate auditors from outside, and the year of the assumption of the current position.

(As of July 1, 2004)