

## Changes of Directors and Executive Officers

### 1. Retiring of Directors and Executive Officers

**7 persons (As of March 31, 2013)**

Name	As of March 31, 2013	Current
Tatsuo Fujino	Adviser	Senior Managing Executive Officer
Takeshi Kumekawa	Adviser	Senior Managing Executive Officer
Yoshiharu Matsumoto	Adviser	Senior Managing Executive Officer
Shintaro Ishimaru	Adviser	Senior Managing Executive Officer
Kiyoshi Yamaguchi	Adviser	Executive Officer
Hidefumi Suzuki	Adviser	Executive Officer
Masahiko Takasaka	Adviser	Executive Officer

### 2. Newly Appointed Executive Officers

**6 persons (As of April 1, 2013)**

Name	Current
Executive Officer Noriyuki Hayata	General Manager, Planning and Administration Department, Machinery Company
Executive Officer Shigeji Sugimoto	SVP & General Manager, Machinery Division, ITOCHU International Inc.
Executive Officer Akihiro Ueda	Deputy Chief Operating Officer, Chemical Division; General Manager, Plastics Department
Executive Officer Isao Kubo	EVP & CAO, ITOCHU International Inc; General Manager, Corporate Planning Division, ITOCHU International Inc; President & CEO, ITOCHU CANADA LTD.
Executive Officer Yasuyuki Harada	Deputy Chief Operating Officer, Forest Products & General Merchandise Division ; General Manager, General Merchandise Department
Executive Officer Mitsuru Ike (Chino)	Deputy General Manager, Legal Division; General Manager, Legal Department No.3

### 3. Reappointment of Executive Officers

#### \* Promoted Executive Officers

Name	As of April 1, 2013	Current
* Tadayuki Seki	Executive Vice President CFO	Senior Managing Executive Officer CFO
Koji Takayanagi	Senior Managing Executive Officer CSO	Senior Managing Executive Officer CSO; General Manager, Corporate Planning & Administration Division
Toru Matsushima	Managing Executive Officer CAO	Managing Executive Officer CAO & CCO
Junichi Sasaki	Managing Executive Officer CEO for ASEAN & South West Asia Bloc; CEO for Oceania; President & CEO, ITOCHU Singapore Pte Ltd.; General Manager, ITOCHU Corporation Singapore Branch; Managing Director & CEO, ITOCHU Australia Ltd.	Managing Executive Officer CEO for ASEAN & South West Asia Bloc; President & CEO, ITOCHU Singapore Pte Ltd.; General Manager, ITOCHU Corporation Singapore Branch
Masahiro Imai	Managing Executive Officer Chief Executive for European Operation; CEO, ITOCHU Europe PLC	Managing Executive Officer Chief Operating Officer, Plant Project, Marine & Aerospace Division
Nobuyuki Kizukuri	Managing Executive Officer Executive Vice President, ICT, General Products & Realty Company; Chief Operating Officer, Construction, Realty & Fiancial Business Division	Managing Executive Officer Chief Operating Officer, Construction, Realty & Financial Business Division
* Yutaka Washizu	Managing Executive Officer Executive Vice President , Metals & Minerals Company; Chief Operating Officer, Metals & Mineral Resources Division	Executive Officer Chief Operating Officer, Metals & Mineral Resources Division
* Fumihiko Kobayashi	Managing Executive Officer General Manager, Human Resources & General Affairs Division	Executive Officer General Manager, Human Resources & General Affairs Division
* Kazutaka Yoshida	Managing Executive Officer Chief Operating Officer, Automobile, Construction Machinery & Industrial Systems Division	Executive Officer Chief Operating Officer, Automobile, Construction Machinery & Industrial Systems Division
Masanori Toyoshima	Executive Officer Chief Operating Officer, Energy Division No.1	Chief Operating Officer, Energy Division
Harutoshi Okita	Executive Officer Chief Operating Officer, Plant Project, Marine & Aerospace Division	Executive Officer Chief Operating Officer, Coal, Nuclear & Solar Division
Yozo Kubo	Executive Officer Executive Vice President, Textile Company; Chief Operating Officer, Apparel Division 1	Executive Officer Executive Vice President, Textile Company; Chief Operating Officer, Apparel Division
Masahiko Kameoka	Executive Officer Executive Vice President, Food Company; Chief Operating Officer, Food Products Marketing & Distribution Division	Executive Officer Chief Operating Officer, Food Products Marketing & Distribution Division
Noriyuki Hayata	Executive Officer General Manager, Secretariat	General Manager, Planning and Administration Department, Machinery Company
Shigeji Sugimoto	Executive Officer General Manager for Chubu Area	SVP & General Manager, Machinery Division, ITOCHU International Inc.

Name	As of April 1, 2013	Current
Isao Kubo	Executive Officer General Manager, Corporate Planning & Administration Division	EVP & CAO, ITOCHU International Inc.; General Manager, Corporate Planning Division, ITOCHU International Inc.; President & CEO, ITOCHU CANADA LTD.
Mitsuru Ike (Chino)	Executive Officer General Manager, Legal Division	Deputy General Manager, Legal Division; General Manager, Legal Department No.3

Of the 37 current Executive Officers, all 30 Executive Officers excluding the 7 retiring Executive Officers (See "1. Retiring of Directors and Executive Officers" ) will be reappointed as Executive Officers.

**4. Newly Appointed Executive Councillors                    3 persons (As of April 1, 2013)**

Name	Current
Kenichi Oshitani	President & CEO, ITOCHU PULP AND PAPER CORPORATION
Yoshiyuki Fujioka	Senior Corporate Planning Officer for European Operation; Group Director, Food Group, ITOCHU Europe PLC
Kazuo Ooguchi	Vice President, SANKEI COMPANY LIMITED

CFO : Chief Financial Officer                    CIO : Chief Information Officer  
CAO : Chief Administrative Officer            CCO : Chief Compliance Officer  
CSO : Chief Strategy Officer

## Corporate Officers

\*Indicates a Representative Director

As of April 1, 2013

Directors 14, Auditors 5, Executive Officers 36

Directors : 14

Name	Title
Eizo Kobayashi	Chairman
* Masahiro Okafuji	President & Chief Executive Officer
* Yoichi Kobayashi	Director
* Tadayuki Seki	Director
* Yoshihisa Aoki	Director
* Koji Takayanagi	Director
* Toru Matsushima	Director
* Yuji Fukuda	Director
* Ichiro Nakamura	Director
* Tomofumi Yoshida	Director
* Hitoshi Okamoto	Director
* Takao Shiomi	Director
Yuko Kawamoto	Director
Kazuyuki Sugimoto	Director

Auditors : 5

Name	Title
Yoshio Akamatsu	Corporate Auditor
Kazutoshi Maeda	Corporate Auditor
Ryozo Hayashi	Corporate Auditor
Keiji Torii	Corporate Auditor
Masahiro Shimojo	Corporate Auditor

Executive Officers : 36

Name	Title
Masahiro Okafuji	President & Chief Executive Officer
Yoichi Kobayashi	Executive Vice President
Tadayuki Seki	Executive Vice President
Yoshihisa Aoki	Senior Managing Executive Officer
Koji Takayanagi	Senior Managing Executive Officer
Toru Matsushima	Managing Executive Officer
Yuji Fukuda	Managing Executive Officer
Kimio Kitamura	Managing Executive Officer
Shuichi Koseki	Managing Executive Officer
Ichiro Nakamura	Managing Executive Officer
Tomofumi Yoshida	Managing Executive Officer
Junichi Sasaki	Managing Executive Officer
Hitoshi Okamoto	Managing Executive Officer
Kunihiko Tamano	Managing Executive Officer

Name	Title
Eiichi Yonekura	Managing Executive Officer
Takao Shiomi	Managing Executive Officer
Masahiro Imai	Managing Executive Officer
Nobuyuki Kizukuri	Managing Executive Officer
Yutaka Washizu	Managing Executive Officer
Fumihiko Kobayashi	Managing Executive Officer
Kazutaka Yoshida	Managing Executive Officer
Masanori Toyoshima	Executive Officer
Harutoshi Okita	Executive Officer
Yozo Kubo	Executive Officer
Kunihiro Nakade	Executive Officer
Masahiko Kameoka	Executive Officer
Ichiro Tsuge	Executive Officer
Kazunori Ishii	Executive Officer
Kazuya Saito	Executive Officer
Tsuyoshi Hachimura	Executive Officer
Noriyuki Hayata	Executive Officer
Shigeji Sugimoto	Executive Officer
Akihiro Ueda	Executive Officer
Isao Kubo	Executive Officer
Yasuyuki Harada	Executive Officer
Mitsuru Ike(Chino)	Executive Officer

February 5, 2013

ITOCHU Corporation

**Personnel Changes**

Name	As of April 1, 2013	Current
Hiroshi Oka	General Manager, Planning & Administration Department, Textile Company	CEO, CONVERSE FOOTWEAR CO.,LTD.
Hideo Nakanishi	Chief Operating Officer, Apparel Division 2	Chief Operating Officer, Textile Material & Fabric Division
Hisao Yakushiji	General Manager, Planning & Administration Department, Machinery Company	Deputy General Manager, Legal Division; Manager, Compliance Department, Legal Division
Koichi Kawaguchi	Chief Operating Officer, Coal, Nuclear & Solar Division	Deputy Chief Operating Officer, Coal, Nuclear & Solar Division
Ryohei Suda	General Manager, Planning & Administration Department, Energy & Chemicals Company	General Manager, Natural Gas Business Department
Masanori Mitsuhashi	Chief Operating Officer, Energy Division No. 2	Deputy Chief Operating Officer, Energy Division; General Manager, Exploration & Production Department
Naoto Chiba	Chief Operating Officer, Fresh Food Division	Chief Operating Officer, Fresh Food & Food Business Solutions Division
Yoshiyuki Fujioka	General Manager, Research & Business Development Division	Senior Corporate Planning Officer for European Operation; Group Director, Food Group, ITOCHU Europe PLC

Kazuo Tachikawa	General Manager for Kyushu Area; General Manager, Chemicals Department, Kyushu Branch; Manager, Kyushu Plastics Section, Chemicals Department, Kyushu Branch	Director, Sakhalin Oil and Gas Development Co., Ltd.
-----------------	---	---

## FY2013 Organizational Changes

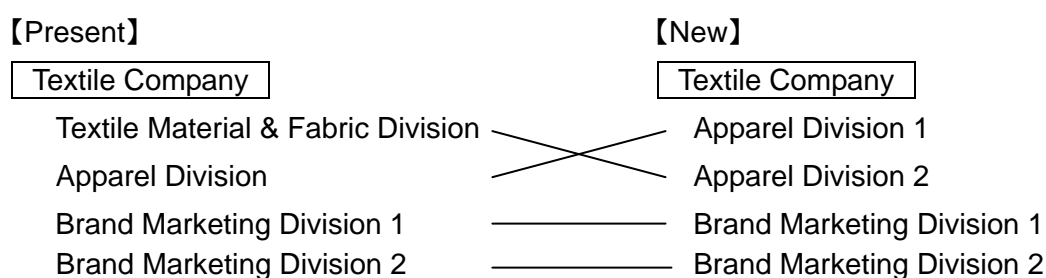
ITOCHU Corporation has announced organizational changes taking effect as of April 1, 2013.

### I. Organizational Changes of Divisions and Departments

#### 1. Reorganization of Divisions

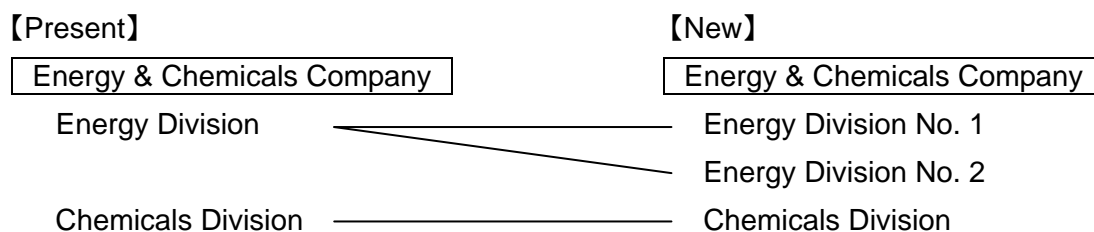
##### Textile Company

- Textile Material & Fabric Division will be renamed Apparel Division 2.
- Apparel Division will be renamed Apparel Division 1.



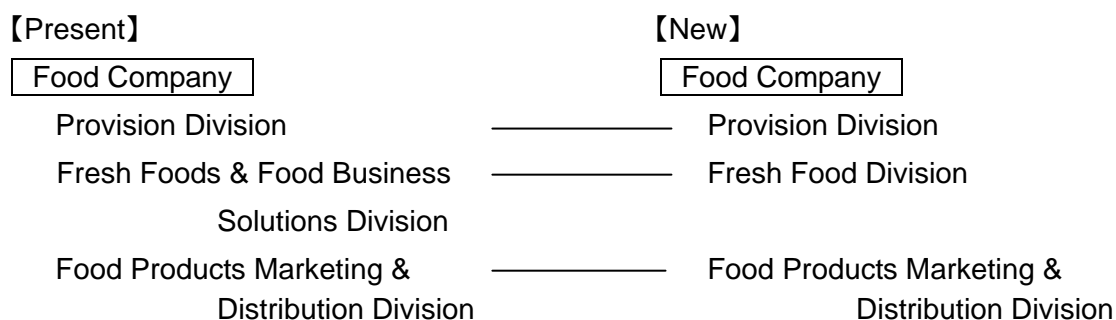
##### Energy & Chemicals Company

- Energy Division will be reorganized into Energy Division No. 1 and Energy Division No. 2.



##### Food Company

- Fresh Foods & Food Business Solutions Division will be renamed Fresh Food Division.





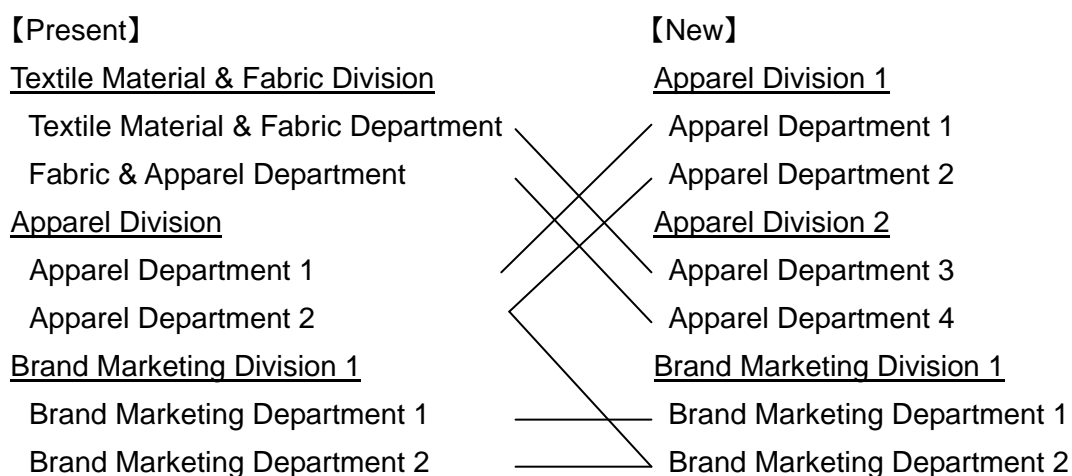
## 2. Reorganization of Departments

### Apparel Division 1 and Brand Marketing Division 1

- A part of the operations of Apparel Department 2 will be transferred to Brand Marketing Department 2.

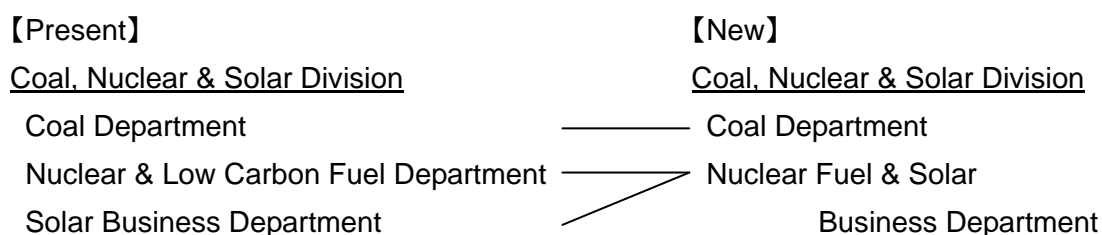
### Apparel Division 2

- Textile Material & Fabric Department and Fabric & Apparel Department will be renamed respectively Apparel Department 3 and Apparel Department 4.



### Coal, Nuclear & Solar Division

- Nuclear & Low Carbon Fuel Department and Solar Business Department will be merged into Nuclear Fuel & Solar Business Department.



### Energy Division No. 1

- International Energy Trading Department and LP Gas, Project Development Department will be merged into Petroleum Trading Department.

### Energy Division No. 2

- Exploration & Production Department will be reorganized into E&P Project Coordinating Department and E&P Project Development Department.

**【Present】**

**【New】**

Energy Division

Energy Division No. 1

International Energy Trading Department

Petroleum Trading Department

LP Gas, Project Development Department

Natural Gas Business Department

Exploration & Production Department

Energy Division No. 2

Natural Gas Business Department

E&P Project Coordinating Department

E&P Business Development Department

Chemicals Division

- Chemical Business Process Operation Department will be abolished.

Provision Division, Fresh Food Division and Food Products Marketing & Distribution Division

- Sugar, Confectionary Materials & Dairy Products Department, Coffee & Beverage Marketing Department, Agri Products Department, Food Service & Distribution Department and Food Products Marketing & Distribution Department will be reorganized into Sugar, Confectionary Materials, Coffee & Dairy Products Department, Agri Products Department, Food Products Marketing & Distribution Department, Food DCM Solution Department and Food Products Marketing & Development Department.
- FamilyMart Department will be renamed CVS Business Department.

Note. "DCM" is an abbreviation of "Demand Chain Management".

**【Present】**

**【New】**

Provision Division

Provision Division

Grain, Feed & Oilseeds Department

Grain, Feed & Oilseeds Department

Oil, Fats & Grain Products Department

Oil, Fats & Grain Products Department

Sugar, Confectionary Materials &  
Dairy Products Department

Sugar, Confectionary Materials,  
Coffee & Dairy Products Department

Coffee & Beverage Marketing Department

Fresh Foods & Food Business

Fresh Food Division

Solutions Division

Marine Products Department

Marine Products Department

Meat Products Department

Meat Products Department

Agri Products Department

Agri Products Department

Food Products Marketing &

Food Service & Distribution Department

Distribution Division

Food Products Marketing &

Food Products Marketing &

Distribution Division

Distribution Department

Food Products Marketing &

Food DCM Solution Department

Distribution Department

FamilyMart Department

Food Products Marketing &

Development Department

CVS Business Department

## II. Changes of Administrative Organizations

### 1. CSO

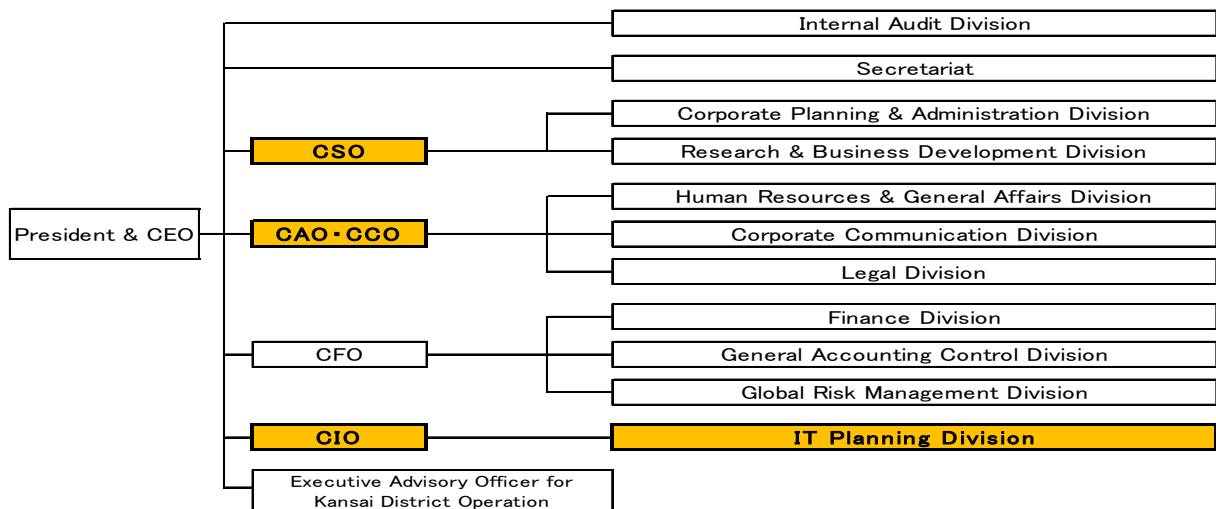
- Present function of CIO will be operated by CSO. Therefore, IT Planning Division will operate under the CSO.

### 2. CAO/CCO

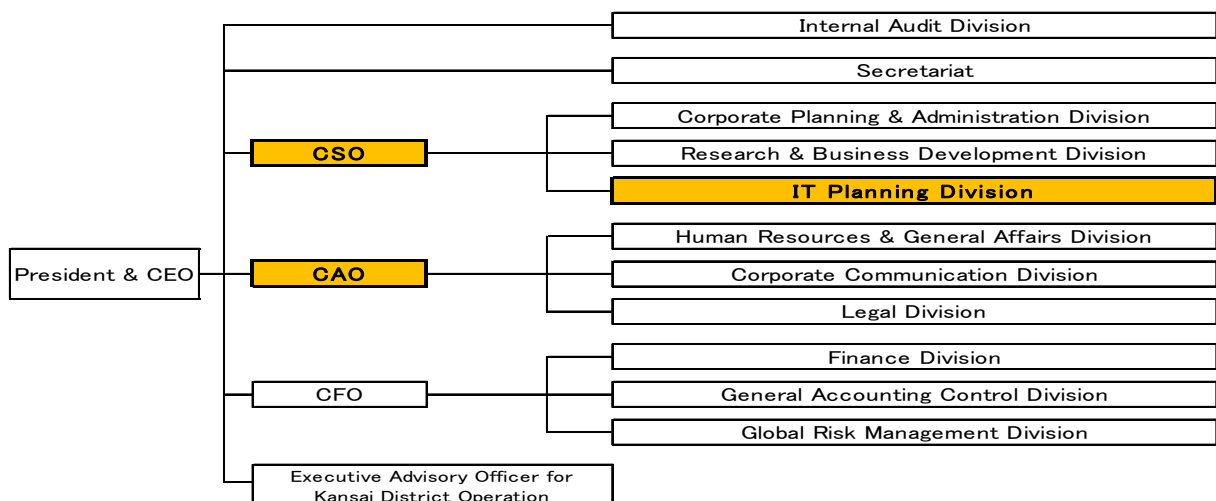
- Present function of CCO will be operated by CAO. Therefore, CAO/CCO will be renamed CAO.

CSO	: Chief Strategy Officer	CIO	: Chief Information Officer
CAO	: Chief Administrative Officer	CCO	: Chief Compliance Office

#### 【Present (~Mar.31.2013)】



#### 【New (Apr.1.2013~)】



## III. Domestic Office

### Nagoya Branch

- Nagoya Branch will be renamed Chubu Branch.