



FY2018 Organizational Changes

ITOCHU Corporation has announced organizational changes taking effect as of April 1st, 2018.

◆ Domestic

I. Divisions

Textile Company

- 「Apparel Division 1」 and 「Apparel Division 2」 will be reorganized into 「Apparel Division」.

【Present】

Textile Company

Apparel Division 1

Apparel Division 2

【New】

Textile Company

Apparel Division



Machinery Company

- 「Automobile Division」 and 「Construction Machinery & Industrial Machinery Division」 will be reorganized into 「Automobile, Construction Machinery & Industrial Machinery Division」.

【Present】

Machinery Company

Automobile Division

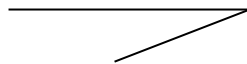
Construction Machinery

& Industrial Machinery Division

【New】

Machinery Company

**Automobile, Construction Machinery
& Industrial Machinery Division**



Metals & Minerals Company

- 「Mineral Resources Division」 and 「Steel, Non-Ferrous & Solar Division」 will be reorganized into 「Metal & Mineral Resources Division」.

【Present】

Metals & Minerals Company

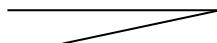
Mineral Resources Division

Steel, Non-Ferrous & Solar Division

【New】

Metals & Minerals Company

Metal & Mineral Resources Division





II .Departments

Textile Company

- Reorganization of 「Apparel Department」.

【Present】

Textile Company

Apparel Division 1

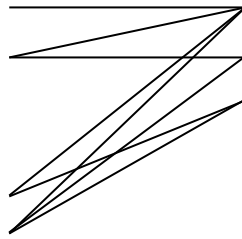
Apparel Department 1

Apparel Department 2

Apparel Division 2

Apparel Department 3

Apparel Department 4



【New】

Textile Company

Apparel Division

Apparel Department 1

Apparel Department 2

Apparel Department 3

Machinery Company

- 「Construction Machinery Department」 and 「Industrial Machinery & Healthcare Business Department」 will be reorganized as 「Construction, Industrial Machinery & Healthcare Business Department」.

【Present】

Machinery Company

Automobile Division

Automobile Department No.1

Isuzu Business Department No.1

Isuzu Business Department No.2

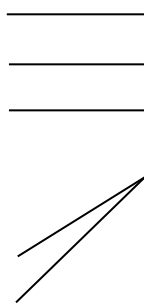
Construction Machinery

& Industrial Machinery Division

Construction Machinery Department

Industrial Machinery & Healthcare

Business Department



【New】

Machinery Company

Automobile, Construction Machinery

& Industrial Machinery Division

Automobile Department No.1

Isuzu Business Department No.1

Isuzu Business Department No.2

Construction, Industrial Machinery

& Healthcare Business Department



Metals & Minerals Company

- 「Iron Ore & Steelmaking Resources Department」, 「Coal & Nuclear Fuel Department」 and 「Non-Ferrous & Metal Materials Department」 will be operated in the 「Metal & Mineral Resources Division」.

【Present】

Metals & Minerals Company

Mineral Resources Division

Iron Ore & Steelmaking

Resources Department

Coal & Nuclear Fuel Department

Steel, Non-Ferrous & Metal Materials Division

Non-Ferrous & Metal Materials Department

【New】

Metals & Minerals Company

Metal & Mineral Resources Division

Iron Ore & Steelmaking

Resources Department

Coal & Nuclear Fuel Department

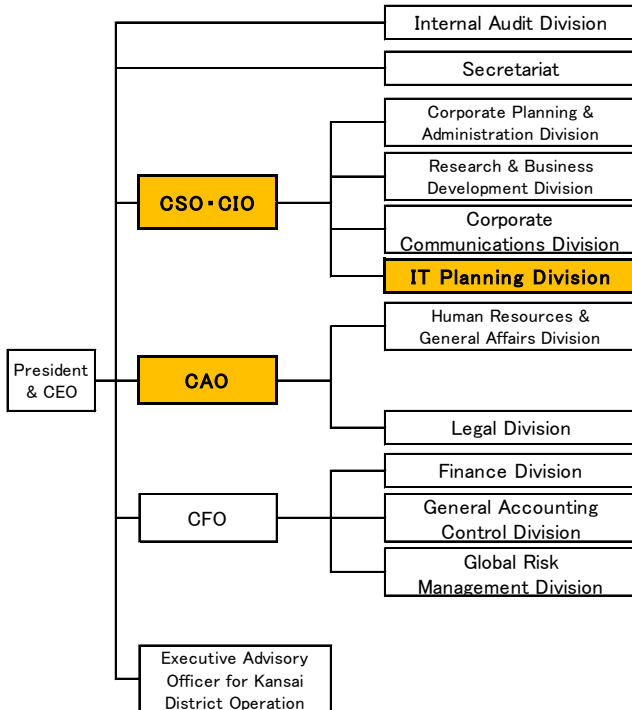
Non-Ferrous & Metal Materials Department

III. Administrative Organizations

CAO・CIO

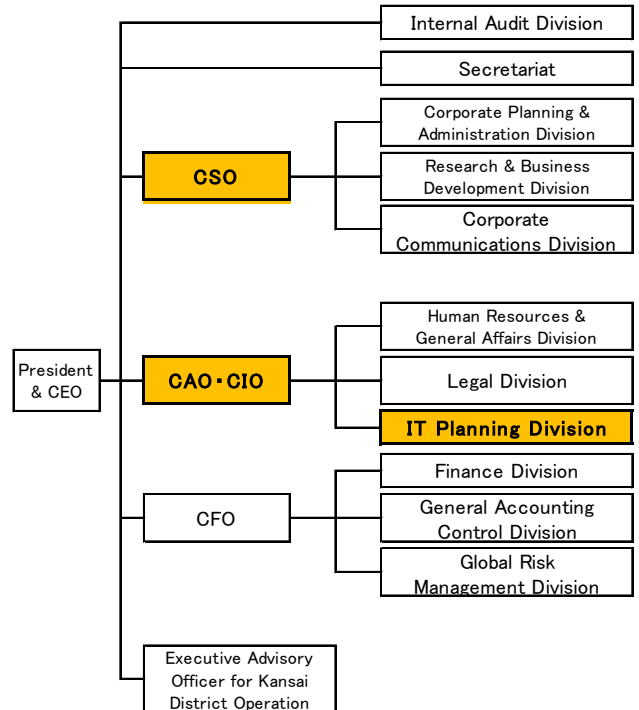
- 「CSO・CIO」 will be renamed as 「CSO」, 「CAO」 will be renamed as 「CAO・CIO」.
- 「IT Planning Division」 will be operated in the 「CAO・CIO」.

【Present】



CSO : Chief Strategy Officer
CAO : Chief Administrative Officer

【New】



CIO : Chief Information Officer
CFO : Chief Financial Officer