

## Editing Policy

### ITOCHU Corporation's Perspectives on Sustainability

ITOCHU Corporation believes that responding to the expectation of society through business activities keeps our Sustainability and further growth. This report presents our initiatives for promotion of Sustainability.

#### Referenced Guidelines

GRI Standards 2016 issued by Global Sustainability Standards Board (GSSB)  
Environmental Reporting Guidelines (2012 version) issued by the Ministry of the Environment of Japan  
ISO 26000 (Guidance on social responsibility)

A side-by-side comparison of GRI Standards and the UN Global Compact can be found at:  
[www.itochu.co.jp/en/csr/report/gri/](http://www.itochu.co.jp/en/csr/report/gri/)

#### Reporting Period

This report principally covers actual data for the fiscal year beginning on April 1, 2019, and ended on March 31, 2020 (FYE 2020). However, some of the most recent information on our activities and initiatives are also included.

#### Publication Information

Publication: September 2020  
Next publication (scheduled): August 2021  
Previous publication: August 2019

#### Reporting Boundary

This report covers ITOCHU Corporation (9 domestic offices and 94 overseas offices) and its major group companies.

#### Corporate Profile

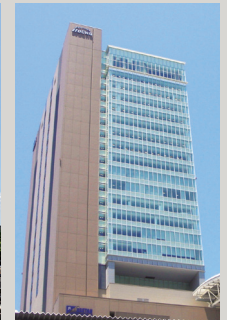
**Company name** ITOCHU Corporation  
**Founded** 1858  
**Incorporated** December 1, 1949  
**Headquarters**  
**Tokyo** 5-1, Kita-Aoyama 2-chome, Minato-ku, Tokyo 107-8077, Japan  
**Osaka** 1-3, Umeda 3-chome, Kita-ku, Osaka 530-8448, Japan

**Chairman & CEO** Masahiro Okafuji  
**Common Stock** 253,448 million yen  
**Number of offices** Domestic offices 9  
Overseas offices 94  
**Number of employees\*** Consolidated 128,146  
Non-consolidated 4,261  
(As of March 31, 2020)

\* The number of consolidated employees is based on actual working employees excluding temporary staff.



Tokyo Headquarters



Osaka Headquarters (North Gate Building)

#### Inquiries

ITOCHU Corporation  
Sustainability Management Department  
TEL : +81-3-3497-4069  
FAX : +81-3-3497-7547  
E-mail : [csr@itochu.co.jp](mailto:csr@itochu.co.jp)

### Disclosure of Sustainability-related Information

To make information on ITOCHU's sustainability initiatives widely accessible, information is disclosed through the following media.



#### Corporate Website Sustainability Pages

Information is disclosed regarding ITOCHU Corporation's sustainability activities in a format that provides detailed coverage across a wide range of themes. Moreover, information on activities conducted during the current year is disseminated on a timely basis.

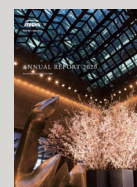
[www.itochu.co.jp/en/csr/](http://www.itochu.co.jp/en/csr/)



#### ESG Report

Wide-ranging information covered in detail on the website Sustainability pages is published in PDF format as an annual ESG Report. The reports provide an ongoing perspective of ITOCHU's sustainability activities.

[www.itochu.co.jp/en/csr/report/](http://www.itochu.co.jp/en/csr/report/)



#### Annual Report

Aimed at investors and other stakeholders, we provide particularly important reporting on ITOCHU's Sustainability activities, along with information such as management results and future growth strategies, in a comprehensive manner from a perspective based on the characteristics of the business activities of a sogo shosha.

[www.itochu.co.jp/en/ir/](http://www.itochu.co.jp/en/ir/)

## Contents

Editing Policy / Corporate Profile / Contents	1	Sustainability at the ITOCHU Group	
Top Commitment : Chairman & CEO	3	Policy & Basic Approach	7
Top Commitment : President & COO	4	Structure and System	8
Message from Chief Administrative Officer	5	Initiatives	10
		Stakeholder Relations	29

## Environment

Environmental Policy	32	Water Resources Conservation	63
Environmental Management	33	Approaches to Conservation of Biodiversity	70
Climate Change	39	ITOCHU's Clean-tech Business	76
Prevention of Pollution and Resource Circulation	54		

## Society

Labor Practices	86	Respect and Consideration for Human Rights	127
Employee Training	106	Responsibilities to Customers	135
Occupational Safety and Health Management	113	Sustainability in the Value Chain	146

## Governance

Corporate Governance	169	Compliance	204
Risk Management	198		
Evaluation by Society	213		
Independent Assurance Report	216		