

# Metals & Minerals Company

We contribute to the growth of the global economy through the stable supply of mineral resources and of steel and non-ferrous metal products to Japan and other countries.

## CSR at the Metals & Minerals Company

### Promoting CSR through the development and stable supply of mineral resources

We promote CSR throughout the entire ITOCHU Group, while pursuing the following missions:

1. the development and stable supply of mineral resources
2. initiatives for solar- and recycling-related businesses that are ecological to the earth

### CSR Action Plans: Key points of our fiscal 2013 action plans

As a global company, we will promote environmental management and businesses that are environmentally friendly both domestically and at overseas Group companies. We will also continue to promote CSR education and training.

For details, please visit the following website:  
<http://www.itochu.co.jp/en/csr/activities/actionplan/#action03>

## Business Areas

### Metals & Mineral Resources Division

This division operates a supply chain for metals and mineral resources that consists of operations of large-scale iron ore and alumina projects; the development of metal resources, such as base metals and rare metals; and trading in iron ore and non-ferrous metal products.



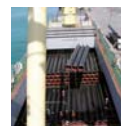
### Coal, Nuclear & Solar Division

This division handles coking coal for steel mills, and fuels for power utilities, such as thermal coal, uranium, and biomass. It is also involved in the trading of greenhouse gas emission credits, and the photovoltaic power generation/solar thermal power generation businesses.



### Steel Business Coordination Department

This department manages and supervises all operations related to Marubeni-Itochu Steel Inc., a steel trading company. The department is working to develop synergies with Marubeni-Itochu Steel by leveraging the steel trading company's strong distribution network, which has more than 100 affiliates in Japan and overseas.



## Contributing to Society and the Environment through Our Businesses

### Integrated Recycling Business at Dalian Changxing Island, China

We, together with a major Japanese recycling company and Chinese partners, established an integrated recycling business for steel, nonferrous scrap, consumer electronics, home appliances and plastics, Dalian New Green Recycle & Resources Corporation, at Dalian Changxing Island Harbor Industrial Zone in China in 2010.

Dalian New Green, as the only recycling facility licensed by the Chinese Government at Dalian Changxing Island Harbor Industrial Zone, is planning to install cutting-edge equipment and sophisticated Japanese environmental technology to further improve operations. The aim is to set this facility apart as a model for all integrated recycling centers built in China in the future.



Rendering of the completed facility

### Partnership with Abengoa Solar of Spain in the Solar Thermal Power Generation Business

In 2010, a partnership was formed with a major Spanish solar thermal power generator, Abengoa Solar, S.A., to develop solar power projects in Asian and European markets. An agreement was also reached to jointly construct two 50-megawatt concentrating solar thermal power plants in Extremadura in southern Spain and carry out power generation business. ITOCHU will take a 30% stake. Commercial operation is scheduled to start in 2012, with power generated at these plants sold to the grid based on the Spanish feed-in tariff system\*. Taking advantage of abundant sunlight in Extremadura, the two plants will produce enough energy to meet the electricity needs of about 52,000 average homes and achieve emissions reductions totaling approximately 63,000 tons of CO<sub>2</sub> per year.

\* A system for purchasing electricity at preferential rates designed to promote the use of renewable energy sources



Two concentrating solar thermal power plants jointly operated with Abengoa Solar