

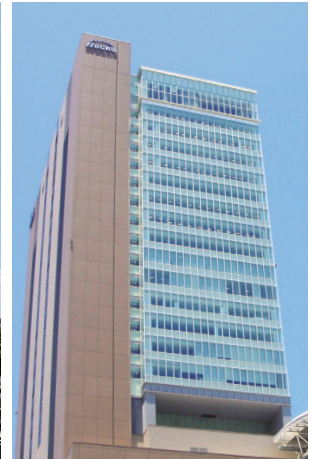
Corporate Profile

Company name	ITOCHU Corporation
Founded	1858
Incorporated	December 1, 1949
Headquarters	Tokyo: 5-1, Kita-Aoyama 2-chome, Minato-ku, Tokyo 107-8077, Japan Osaka: 1-3, Umeda 3-chome, Kita-ku, Osaka 530-8448, Japan
President & CEO	Masahiro Okafuji
Common Stock	¥202,241 million
Number of offices	Domestic offices 9 Overseas offices 112
Number of employees*	Consolidated 110,487 Non-consolidated 4,262 (As of March 31, 2015)

* The number of consolidated employees is based on actual working employees excluding temporary staff.



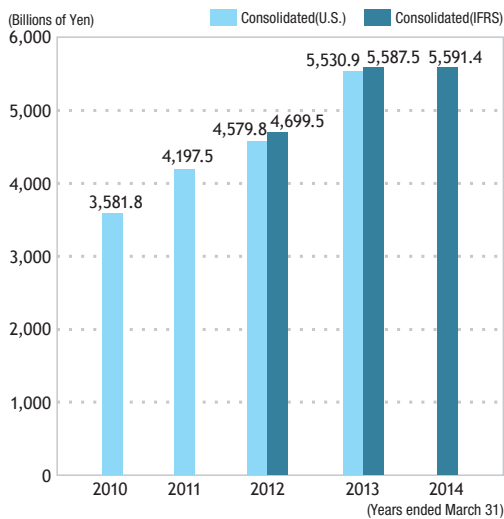
Tokyo Headquarters



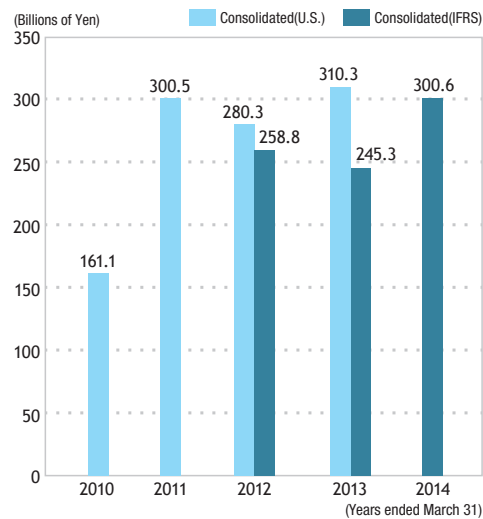
Osaka Headquarters
(North Gate Building)

Financial Overview

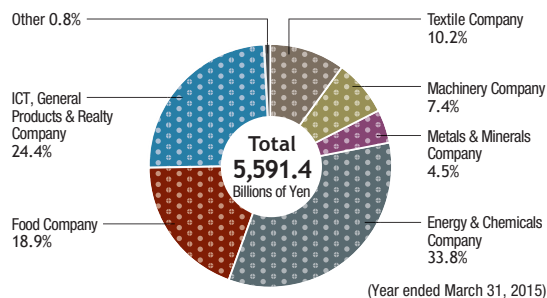
Revenue



Net Income / Profit Attributable to ITOCHU



Revenue by Division Company (Consolidated·IFRS)



Revenue by Region (Consolidated·IFRS)

