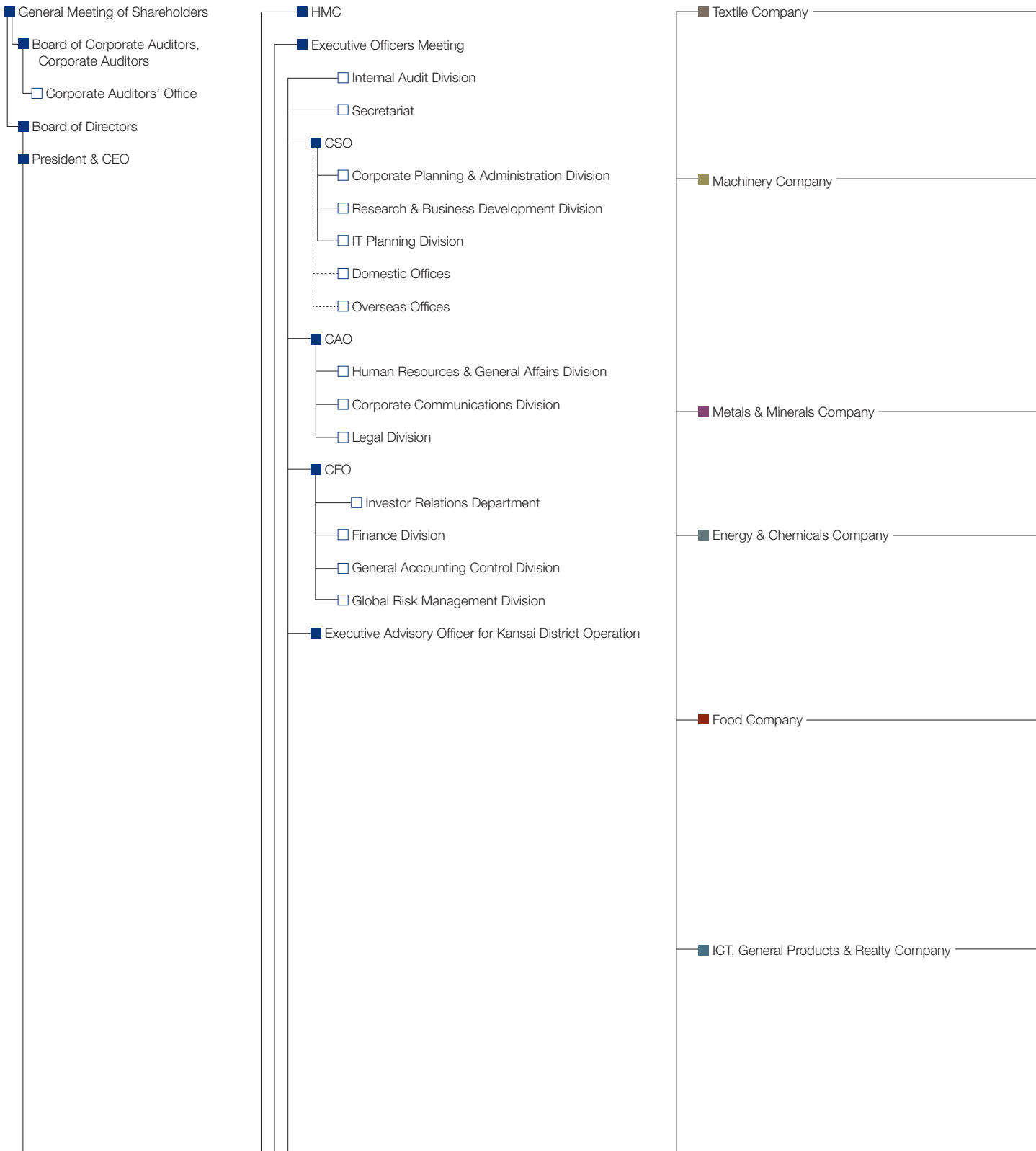


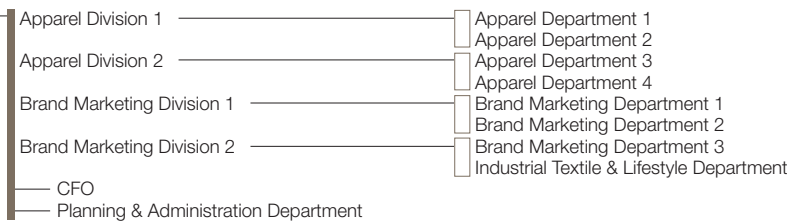
# Operational Structure

## Organizational Structure As of July 1, 2013

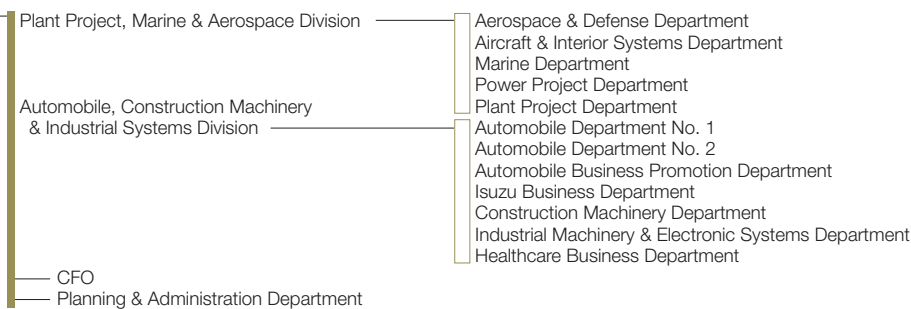


HMC : Headquarters Management Committee  
 CSO : Chief Strategy Officer

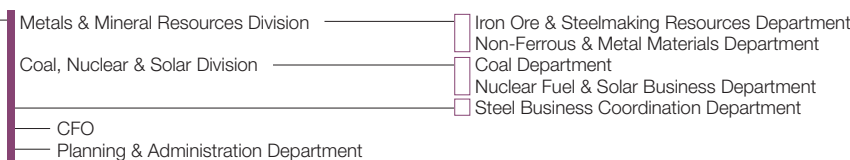
CAO : Chief Administrative Officer  
 CFO : Chief Financial Officer



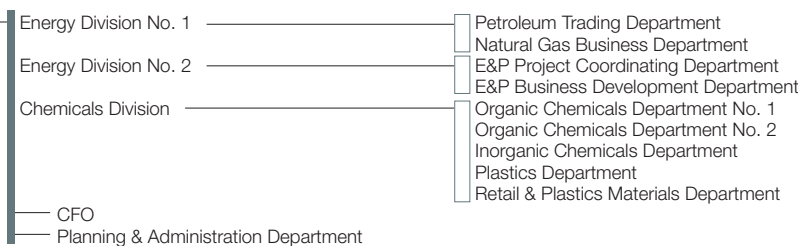
Textile Company	
Number of Employees	
Consolidated	20,101
Non-consolidated	402
Number of Subsidiaries and Associates	
Domestic	23
Overseas	17



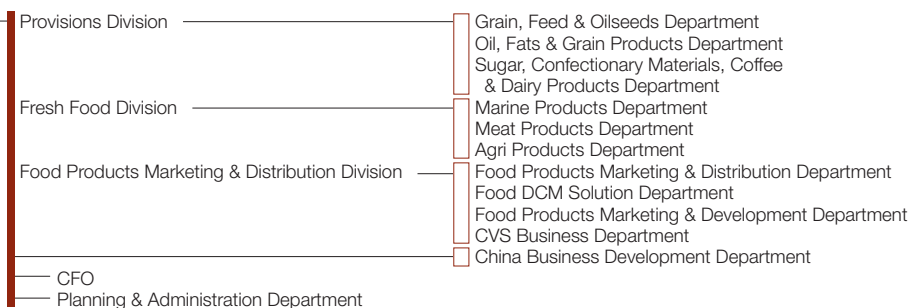
Machinery Company	
Number of Employees	
Consolidated	11,749
Non-consolidated	468
Number of Subsidiaries and Associates	
Domestic	27
Overseas	42



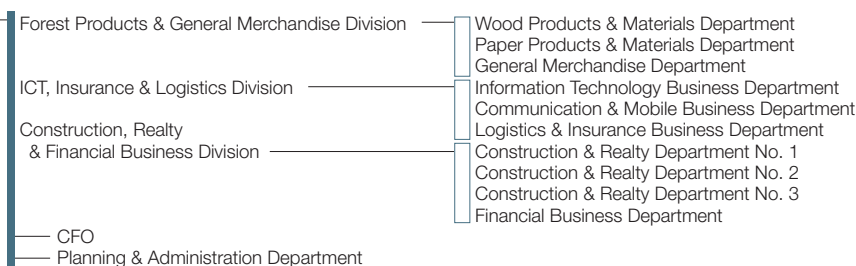
Metals & Minerals Company	
Number of Employees	
Consolidated	774
Non-consolidated	197
Number of Subsidiaries and Associates	
Domestic	6
Overseas	9



Energy & Chemicals Company	
Number of Employees	
Consolidated	8,523
Non-consolidated	333
Number of Subsidiaries and Associates	
Domestic	23
Overseas	32



Food Company	
Number of Employees	
Consolidated	6,995
Non-consolidated	389
Number of Subsidiaries and Associates	
Domestic	20
Overseas	25



ICT, General Products & Realty Company	
Number of Employees	
Consolidated	25,828
Non-consolidated	407
Number of Subsidiaries and Associates	
Domestic	42
Overseas	37

Others	
Number of Employees	
Consolidated	3,543
Non-consolidated	2,023
Number of Subsidiaries and Associates	
Domestic	4
Overseas	49

Total	
Number of Employees	
Consolidated	77,513
Non-consolidated	4,219
Number of Subsidiaries and Associates	
Domestic	145
Overseas	211

\* The numbers of employees, subsidiaries, and associates are as of March 31, 2013.

\* The number of consolidated employees is based on actual working employees excluding temporary staff.

\* Others of the number of non-consolidated employees includes a total of 1,548 employees; employees temporarily relocated to other companies (domestic 886, overseas 322), employees and trainees assigned to overseas posts (340).

\* The criteria to count subsidiaries and associates were changed so that the number of companies directly invested by ITOCHU or its overseas trading subsidiaries are shown above.

## Global Network As of July 1, 2013

### North America / Latin America

#### North America

ITOCHU International Inc.  
22nd and 23rd Floors, 335 Madison Avenue, New York,  
N.Y. 10017, U.S.A.  
Telephone : 1-212-818-8000  
Facsimile : 1-212-818-8282  
■ New York, Chicago, San Francisco, Los Angeles, Washington,  
Houston, Portland, Vancouver, Mexico City

#### Latin America

ITOCHU BRASIL S.A.  
Av. Paulista 37, 19 andar, Vila Mariana, São Paulo  
CEP 01311-902, BRAZIL  
Telephone : 55-11-3170-8501  
Facsimile : 55-11-3170-8549  
■ São Paulo, Rio de Janeiro, Panama, Buenos Aires, Bogota,  
Santiago, Caracas, Quito  
■ Lima

### Europe / Africa / Middle East / CIS

#### Europe

ITOCHU Europe PLC  
The Broadgate Tower 20 Primrose Street, London EC2A 2EW, U.K.  
Telephone : 44-20-7947-8000  
Facsimile : 44-20-7947-8240/8241  
■ London, Düsseldorf, Hamburg, Paris, Milano, Madrid, Budapest,  
Tunis  
■ Alger, Casablanca, Praha, Bucharest, Warszawa

#### Africa

ITOCHU Corporation, Johannesburg Branch  
2nd Floor Block A, The Pivot, Montecasino Boulevard, Fourways,  
2055, Johannesburg, SOUTH AFRICA  
Telephone : 27-11-465-0030  
Facsimile : 27-11-465-0635/0604  
■ Lagos  
■ Johannesburg  
■ Accra, Nairobi, Addis Ababa

#### Middle East

ITOCHU Corporation, Dubai Branch  
201 The Spectrum Building, Al Qutaeyat Road, Oud Metha,  
P.O.Box 3572, Dubai, U.A.E.  
Telephone : 971-4-302-0000  
Facsimile : 971-4-335-0101  
■ Dubai, Tehran  
■ Dubai, Istanbul  
■ Cairo, Amman, Ankara, Riyadh, Al Khobar, Kuwait, Muscat, Doha,  
Tripoli, Karachi, Abu Dhabi

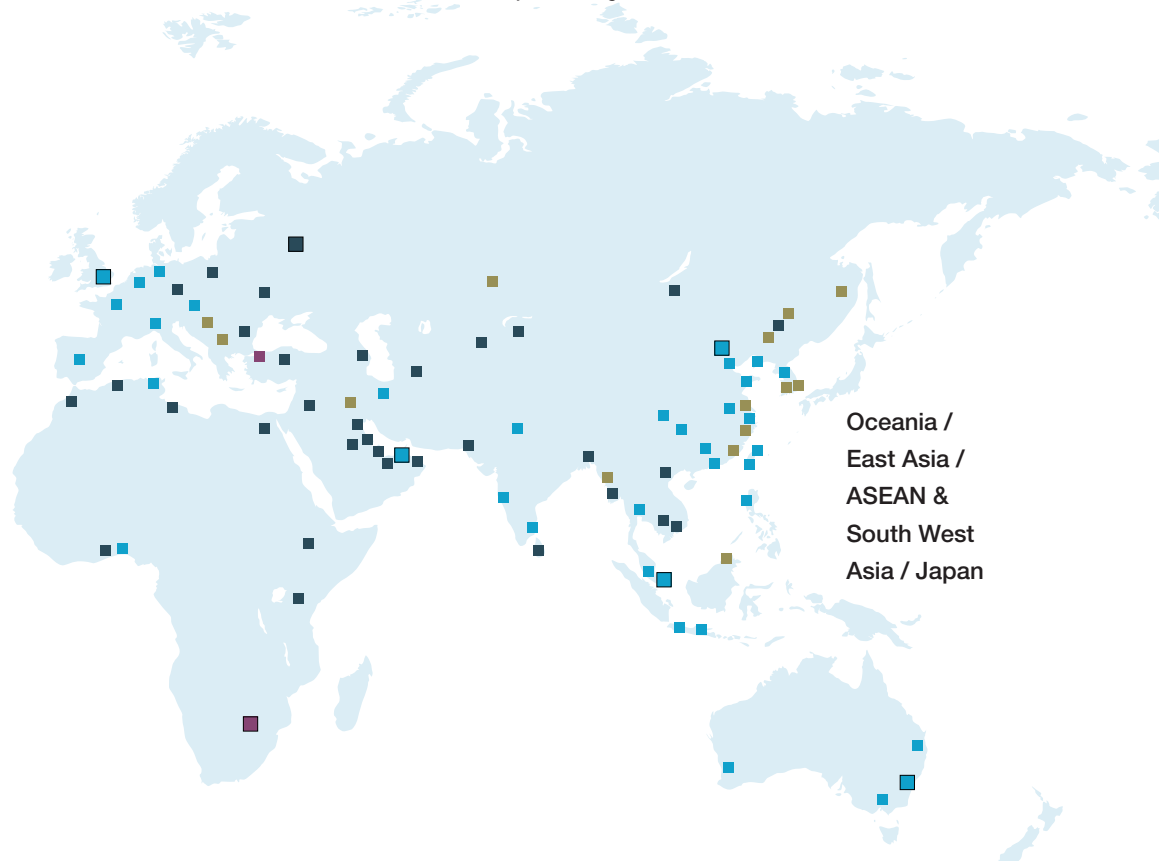
#### CIS

ITOCHU Corporation, Moscow Representative Office  
Savvinskaya Office Building, 9th Floor, Savvinskaya Nab., 15,  
Moscow, 119435, RUSSIAN FEDERATION  
Telephone : 7-495-961-1456  
Facsimile : 7-495-961-1447/1448  
■ Moscow, Almaty, Kiev, Ashgabat, Tashkent, Baku

### Europe / Africa / Middle East / CIS

### Oceania / East Asia / ASEAN & South West Asia / Japan

- Overseas Regional Headquarters
- Overseas Trading Subsidiaries and their Branches / Offices
- Overseas Branches
- Overseas Liaison Offices
- Others



## Oceania / East Asia / ASEAN & South West Asia / Japan

### Oceania

ITOCHU Australia Ltd.  
 Level 31, Grosvenor Place, 225 George Street, Sydney,  
 N.S.W. 2000, AUSTRALIA  
 Telephone : 61-2-9239-1500  
 Facsimile : 61-2-9241-3955  
 ■ Sydney, Melbourne, Perth, Brisbane

### East Asia

ITOCHU (China) Holding Co., Ltd.  
 Room 501, 5/f. No. 2 Office Building, China Central Place,  
 No. 79, Jian Guo Road, Chaoyang District, Beijing,  
 THE PEOPLE'S REPUBLIC OF CHINA (ZIP code: 100025)  
 Telephone : 86-10-6599-7000  
 Facsimile : 86-10-6599-7111  
 ■ Beijing, Shanghai, Dalian, Tianjin, Qingdao, Chongqing, Hong Kong,  
 Guangzhou, Nanjing, Sichuan, Taipei, Kaohsiung, Seoul  
 ■ Changchun, Ulaanbaatar

### ASEAN & South West Asia

ITOCHU Singapore Pte Ltd  
 9 Raffles Place, #41-01 Republic Plaza, SINGAPORE 048619  
 Telephone : 65-6230-0400  
 Facsimile : 65-6230-0560  
 ■ Singapore, Kuala Lumpur, Jakarta, Surabaya, Bangkok,  
 New Delhi, Mumbai, Chennai, Manila  
 ■ Manila  
 ■ Jakarta, Hanoi, Ho Chi Minh City, Yangon, Phnom Penh,  
 Colombo, Dhaka

### Japan

Headquarters  
 Tokyo  
 5-1, Kita-Aoyama 2-chome,  
 Minato-ku, Tokyo 107-8077, Japan  
 Telephone : 81-3-3497-2121  
 Facsimile : 81-3-3497-4141

### Osaka

1-3, Umeda 3-chome,  
 Kita-ku, Osaka 530-8448, Japan  
 Telephone : 81-6-7638-2121  
 Facsimile : 81-6-7638-3220

Chubu, Kyushu, Chugoku & Shikoku, Hokkaido, Tohoku, Hokuriku, Toyama



## Major Subsidiaries and Associated Companies As of March 31, 2013

	Name	Voting Shares (%)	Operations		
<b>Textile Company</b>					
Subsidiaries	Domestic	SANKEI CO., LTD.	100.0	Manufacture and wholesale of garment materials	
		LEILIAN CO., LTD.	99.4	Retail of women's apparel	
		UNICO CORPORATION	100.0	Manufacture and wholesale of uniforms	
		JAVA HOLDINGS CO., LTD.	65.0	Holding company of retail of ladies' & kids' apparel brand	
		ITOCHU MODEPAL CO., LTD.	100.0	Manufacture and wholesale of apparel	
		ROY-NE CO., LTD.	99.9	Manufacture and wholesale of woven and knitted products	
		JOI'X CORPORATION	100.0	Manufacture and wholesale of men's apparel	
		BMI HOLDINGS CO., LTD.	100.0	Holding company of brand business	
		SCABAL JAPAN Co., Ltd.	80.0	Import and sale of SCABAL brand products	
		ITOCHU FASHION SYSTEM Co., Ltd.	100.0	Comprehensive consulting in the fashion industry	
		ITOCHU HOME FASHION CORPORATION	100.0	Manufacture and wholesale of home furnishings	
		CI Shopping Service Co., Ltd.	100.0	Sale of everyday items aimed at ITOCHU Group employees and families	
		CI TEXTILE SERVICE CO., LTD.	100.0	Outsourcing of administrative duties for delivery, production control, and quality control	
		Overseas	ITOCHU Textile Prominent (ASIA) Ltd. (Hong Kong S.A.R., China)	100.0	Production control and wholesale of textile materials, fabrics, and apparel
		ITOCHU TEXTILE (CHINA) CO., LTD. (China)	100.0	Production control and wholesale of textile materials, fabrics, and apparel	
		UNIMAX SAIGON CO., LTD. (Vietnam)	80.0	Manufacture of uniforms	
		<input type="checkbox"/> Bramhope Group Holdings Ltd. (U.K.)	100.0	Manufacture and wholesale of apparel products	
Associates	Domestic	MARUKO CO., LTD.	26.5	Manufacture and wholesale of lady's underwear, etc.	
		DESCENTE, LTD.	25.7	Manufacture and wholesale of sportswear, etc.	
		<input checked="" type="checkbox"/> MAGASseek Corporation	25.0	Retail website of fashion apparel by PC and mobile	
		T.KAWABE & CO., LTD.	25.7	Manufacture and wholesale of handkerchiefs, scarves, and other accessory goods	
		Watakyu Seimoa Corporation	25.0	Total outsourcing service mainly linen supply for medical & welfare institutions	
		<input type="checkbox"/> TERAOKA SEISAKUSHO CO., LTD.	25.4	Manufacture of adhesive tape	
		AYAHA CORPORATION	33.5	Manufacture of tyre cords, etc.	
		Overseas	Shandong Ruyi Science & Technology Group Co., Ltd. (China)	31.7	Holding company of Shandong Ruyi Technology Group, operating a textile business, etc.
			Thai shikibo co., ltd. (Thailand)	30.0	Manufacture of cotton yarn
			Paul Smith Group Holdings Limited (U.K.)	40.4	Holding company of Paul Smith Group
		Shanshan Group Co., Ltd. (China)	30.0	Holding company of Shanshan Group, operating a textile business, electronic components, etc.	

■ Associated company changed from subsidiary in the fiscal year ended March 31, 2013

Newly consolidated subsidiary and associated company in the fiscal year ended March 31, 2013

## Machinery Company

Subsidiaries	Domestic	ITOCHU Plantech Inc.	100.0	Export and import of small-to-medium-scale plant and equipment and domestic environmental and energy solution businesses	
		IMECS Co., Ltd.	100.0	Ownership and operation of ships, chartering, ship machinery, secondhand ships, and administration management of overseas shipping companies	
		ITOCHU AVIATION, CO., LTD.	100.0	Import / export and wholesale of aircraft, aircraft part, and related equipment	
		JAPAN AEROSPACE CORPORATION	100.0	Import / export and wholesale of aircraft, its parts and related equipment, helicopter engines, defense related systems and products, and security related systems	
		ITOCHU Automobile Corporation	100.0	Export / import and inter-third trade of car parts	
		<input type="checkbox"/> Toyo Advanced Technologies Co., Ltd.	70.0	Manufacturing and sales of machine tools and automobile parts	
		ITOCHU CONSTRUCTION MACHINERY CO., LTD.	100.0	Sales and rental of construction machinery	
		ITOCHU MACHINE-TECHNOS CORPORATION	100.0	Import / export and wholesale of industrial machinery	
		Century Medical, Inc.	100.0	Import and sale of medical equipment	
		ACRONET Corporation	100.0	CRO business	
		Overseas	I-Power Investment, Inc. (U.S.A.)	100.0	Investment company in the power industry
			Tyr Energy, Inc. (U.S.A.)	100.0	Power generation business in North America
			NAES Corporation (U.S.A.)	100.0	Power plant operation and maintenance services provider for independent power producers and utilities
			Enprotech Corp. (U.S.A.)	100.0	Maintenance and repair of industrial machinery in automobile, steel, and bottling industries
			IM AUTOTRADE HOLDING G.m.b.H (Austria)	100.0	Wholesale and inter-third trade of automobiles and motorcycles
			ITOCHU Automobile America Inc. (U.S.A.)	100.0	Trading and distribution of automobiles
			Auto Investment Inc. (U.S.A.)	100.0	Sales and repair of automobiles
			PT. SUZUKI Finance Indonesia (Indonesia)	70.0	Automobile and motorcycle finance company
			VEHICLES MIDDLE EAST FZCO (U.A.E.)	100.0	Trade finance for automobiles
		EURASIA LOGISTICS LTD. (Hungary)	70.7	Transportation and warehousing	
		MULTIQUIP INC. (U.S.A.)	100.0	Distribution and manufacturing of light construction equipment and generators	
		Telerent Leasing Corporation (U.S.A.)	100.0	Distribution and lease of televisions to hotels and hospitals	

Newly consolidated subsidiary in the fiscal year ended March 31, 2013

	Name	Voting Shares (%)	Operations	
Associates	Domestic	Malha Gas Investment Co., Ltd.	30.0	Investment in the project for the construction, ownership, and operation of gas pipelines
		JAMCO Corporation	33.2	Maintenance of aircraft and manufacture of aircraft interior
		Isuzu Motors Sales Ltd.	25.0	Commercial vehicle life cycle business
		YANASE & CO., LTD.	25.7	Sales and repair of automobiles
		Century Tokyo Leasing Corporation	25.1	Diversified leasing business, various types of financing, and international business
		SUNCALL CORPORATION	27.1	Manufacture and sales of optical communication devices, electronic devices, and assembly
		GOODMAN Co., Ltd.	36.8	Import, development, manufacturing, and sale of medical equipment
		Japan Medical Dynamic Marketing, Inc.	30.0	Import, development, manufacturing, and sale of medical equipment
	Overseas	PT. BHIMASENA POWER INDONESIA (Indonesia)	32.0	IPP (Independent Power Producer) in Indonesia
		KS Drilling Pte. Ltd. (Singapore)	20.0	Oil drilling services
		SICHUAN GANGHONG ENTERPRISE MANAGEMENT CO., LTD. (China)	49.0	Sales and repair of automobiles
		"SUZUKI MOTOR RUS" LLC (Russia)	50.0	Import and wholesale of automobiles, motorcycles, and spare parts
		Komatsu Southern Africa (Pty) Ltd. (Republic of South Africa)	20.0	Sales and service of construction and mining equipment
		PT Hexindo Adiperkasa Tbk (Indonesia)	25.0	Sales and service of construction machinery

### Metals & Minerals Company

Subsidiaries	Domestic	ITOCHU Metals Corporation	100.0	Import / export and wholesale of non-ferrous / light metals, products, and steel scrap, development of recycle business
		Brazil Japan Iron Ore Corporation	67.5	Investment in projects of iron ore in Brazil
		ITOCHU Mineral Resources Development Corporation	100.0	Consulting and technical services in the mining industry
	Overseas	ITOCHU Minerals & Energy of Australia Pty Ltd (Australia)	100.0	Investment and sales in projects of iron ore, coal, and bauxite mining and manufacture of alumina
		ITC Platinum Development Ltd (U.K.)	75.0	Managing business of the exploration and development of Platinum Group Metals (PGMs) and Nickel of the Platreef Project in South Africa
		ITOCHU Coal Americas Inc. (U.S.A.)	100.0	Owning an interest of coal mining and transport infrastructure
Associates	Domestic	Marubeni-Itochu Steel Inc.	50.0	Import / export and wholesale of steel products
		Ecosystem Japan Co., Ltd.	49.3	Sales and installation of photovoltaic systems and eco-sensitive products
	Overseas	Scatec Solar AS (Norway)	37.5	Photovoltaic system integrator

■ Associated company changed from subsidiary in the fiscal year ended March 2013

### Energy & Chemicals Company

Subsidiaries	Domestic	ITOCHU ENEX CO., LTD.	54.0	Wholesale of petroleum products and gas
		ITOCHU Oil Exploration Co., Ltd.	100.0	Exploration and production of oil, gas, and other hydrocarbon resources
		JB BioEnergy Inc.	100.0	Investment in projects of bioethanol in Brazil
		ITOCHU CHEMICAL FRONTIER Corporation	100.0	Wholesale of fine chemicals and related raw materials
		ITOCHU PLASTICS INC.	100.0	Development and wholesale of plastics and related products
		C.I. Kasei Co., Ltd.	97.6	Manufacture of PVC pipe and film and related materials
	Overseas	ITOCHU Oil Exploration (Azerbaijan) Inc. (Cayman Islands, British West Indies)	100.0	Exploration and production of crude oil and gas
		CIECO Exploration and Production (UK) Limited (U.K.)	100.0	Exploration and production of crude oil and gas
		ITOCHU PETROLEUM CO., (SINGAPORE) PTE. LTD. (Singapore)	100.0	International trade of crude oil and petroleum products
		IPC EUROPE LTD. (U.K.)	100.0	International trade of crude oil and petroleum products
		IPC (USA), Inc. (U.S.A.)	100.0	International trade of crude oil and petroleum products
		JD Rockies Resources Ltd (U.S.A.)	100.0	Holding interest of Shale Oil block and Investment to Samson Resources Corporation
		ITOCHU Plastics Pte., Ltd. (Singapore)	100.0	Wholesale of plastic resins
	PTAGENT. CORPORATION (China)	100.0	Wholesale of PTA (purified terephthalic acid)	

	Name	Voting Shares (%)	Operations
Associates	Domestic	NISSHO Petroleum Gas Corporation	25.0 Wholesale of LPG and petroleum products
		Japan Ohanet Oil & Gas Co., Ltd.	35.0 Exploration and production of gas and condensate
		Ningbo PTA Investment, Co., Ltd.	35.0 Investment in manufacture of PTA in China
		<input type="checkbox"/> TODA KOGYO CORP.	22.1 Manufactures iron oxide products including magnetic powder, ferrite and materials
		TAKIRON Co., Ltd.	28.9 Manufacture of flat and corrugated plastic sheets
		Kureha Battery Materials Japan Co., Ltd.	20.0 Manufacture of materials for Lithium-Ion Batteries
	Overseas	Isla Petroleum & Gas Corporation (the Philippines)	40.0 Domestic LPG distribution business in the Philippines
		NCT Holland B.V. (Netherlands)	40.0 Trading and distribution of the plastics materials based on Europe and Middle East
		BRUNEI METHANOL COMPANY SDN. BHD. (Brunei)	25.0 Manufacture of methanol in Brunei

Newly consolidated associated company in the fiscal year ended March 31, 2013

## Food Company

Subsidiaries	Domestic	ITOCHU Feed Mills Co., Ltd.	99.9 Compound feeds manufacturer
		ITOCHU Sugar Co., Ltd.	100.0 Sugar and sugar related by-products manufacturer
		ITOCHU Food Sales and Marketing Co., Ltd.	100.0 Food materials importer and wholesaler
		Japan Nutrition Co., Ltd.	100.0 Feed and feed additives wholesaler
		I-SILO HOLDINGS CO., LTD.	100.0 Holding company of grain terminals
		<input type="checkbox"/> Dole International Holdings, Inc.	100.0 Investment in Asian fresh produce business and worldwide packaged foods business
		ITOCHU-SHOKUHIN Co., Ltd.	51.7 Wholesale and distribution of foods
		NIPPON ACCESS, INC.	93.8 Wholesale and distribution of foods
		China Foods Investment Corp.	74.1 Business management of Ting Hsin and its group companies
		Overseas	UNEX (GUATEMALA), S.A. (Guatemala)
OILSEEDS INTERNATIONAL LTD. (U.S.A.)	100.0 Vegetable oil manufacturer		
Quality Technology International, Inc. (QTI) (U.S.A.)	100.0 High value-added feed materials and feed additives wholesaler		
Associates	Domestic	Fuji Oil Co., Ltd.	25.7 Integrated manufacturer of vegetable oil and related products
		Japan Foods Co., Ltd.	37.0 Manufacture of soft drinks
		KUMESHIMA SUGAR CO., LTD.	34.8 Manufacture and sales of raw sugar
		Prima Meat Packers, Ltd.	39.6 Manufacture and marketing of meat, ham, sausage, and processed foods
		KI Fresh Access, Inc.	33.5 ECR*1-type dedicated produce service center operations for food supermarkets, as well as wholesale and distribution of fresh fruits, vegetables, and processed products
		SHOW-WA Co., Ltd.	20.0 Wholesale of foods
		FamilyMart Co., Ltd.	31.7 Operation of a convenience store chain, using the name FamilyMart, and a franchise system
		<input type="checkbox"/> CONFEX CO., LTD.	25.0 Wholesale and distribution of confectionery products
	Overseas	CGB ENTERPRISES, INC. (U.S.A.)	50.0 Grain company in US midwest
		EGT, LLC (U.S.A.)	29.0 Grain terminal operator in US west coast
		P.T. ANEKA COFFEE INDUSTRY (Indonesia)	26.8 Coffee processor and exporter
		BFA HOLDINGS PTY LTD. (Australia)	45.0 Holding company of dairy products manufacturer
		P. T. ANEKA TUNA INDONESIA (Indonesia)	47.0 Manufacture of canned and pouched tuna
<input type="checkbox"/> HYLIFE GROUP HOLDINGS LTD. (Canada)	33.4 Genetics, commercial breed, and manufacture of pork		
	TAIWAN DISTRIBUTION CENTER CO., LTD. (Taiwan)	39.4 Wholesale of foods and sundries	

Newly consolidated subsidiary and associated companies in the fiscal year ended March 31, 2013

\*1 Efficient consumer response (ECR): Promoting distribution efficiency by linking manufacturers, wholesalers, and retailers, thereby responding to customer demands for lower prices

	Name	Voting Shares (%)	Operations	
<b>ICT, General Products &amp; Realty Company</b>				
Subsidiaries	Domestic	ITOCHU Kenzal Corp.	100.0 Wholesale of wood products and building materials	
		ITOCHU Pulp & Paper Corp.	100.0 Wholesale of paper, paper boards, and various materials	
		ITOCHU Ceratech Corp.	100.0 Manufacture and sale of ceramic raw materials and products	
		ITOCHU Windows Co., Ltd.	66.0 Manufacture and sale of insulating glass	
		ITR Co., Ltd.	100.0 Wholesale and retail of tyres	
		ITOCHU Techno-Solutions Corporation	56.6 Sales, maintenance, and support of computers and network systems; commissioned software development; information processing services	
		Excite Japan Co., Ltd.	57.4 Internet information service	
		ITOCHU Orico Insurance Services Co., Ltd.	65.0 Insurance agency	
		I&T Risk Solutions Co., Ltd.	95.0 Insurance broking services and risk consulting	
		ITOCHU LOGISTICS CORP.	99.0 Comprehensive logistics services (3PL, warehousing, trucking, international freight forwarding, customs clearance, and NVOCC)	
		ITOCHU Property Development, Ltd.	99.8 Development and sale of housing (apartments, condominiums, and homes)	
		ITOCHU HOUSING Co., Ltd.	100.0 Real estate agent and property consultant	
		ITOCHU Urban Community Ltd.	100.0 Operation and management of real estate property	
		ITOHPIA HOME Co., Ltd.	100.0 Planning and construction of homes	
		AD Investment Management Co., Ltd.	66.0 Asset management for Advance Residence Investment Corporation	
		Overseas	CIPA Lumber Co. Ltd. (Canada)	100.0 Manufacture of veneer
			Pacific Woodtech Corporation (U.S.A.)	100.0 Manufacture of LVL & I-Joist
			PrimeSource Building Products, Inc. (U.S.A.)	100.0 Wholesale of building materials
			ITOCHU BUILDING PRODUCTS CO., INC. (U.S.A.)	100.0 Wholesale of building materials
			□ ITOCHU FIBRE LIMITED (U.K.)	100.0 Distribution and trading of pulp and paper materials and investment in METSA FIBRE
			P. T. ANEKA BUMI PRATAMA (Indonesia)	100.0 Processing of natural rubber
			RUBBERNET (ASIA) PTE LTD. (Singapore)	80.0 Sale of crude rubber
			European Tyre Enterprise Limited (U.K.)	100.0 Headquarters of Stapleton's and Kwik-Fit group management
			COSMOS SERVICES CO., LTD. (Hong Kong S.A.R., China)	100.0 Consulting and broking of insurance and reinsurance
			ITOCHU LOGISTICS (CHINA) CO., LTD. (China)	100.0 Comprehensive logistics services (3PL, warehousing, trucking, import / export, customs clearance, and value-added services)
			ITOCHU Finance (Asia) Ltd. (Hong Kong S.A.R., China)	100.0 Proprietary financial investment and development of new financial business in Asia
Associates	Domestic	Japan Brazil Paper and Pulp Resources Development Co., Ltd.	32.1 Investment in CENIBRA, one of the largest eucalyptus pulp manufacturers in Brazil	
		DAIKEN CORPORATION	25.5 Manufacture of building materials and construction parts	
		Adways Co., Ltd.	22.6 Internet advertising & application software development for smartphones	
		SPACE SHOWER NETWORKS INC.	36.4 Music channel on cable / satellite television	
		■ ITC NETWORKS CORPORATION*2	48.3 Distribution and retail business of mobile phones	
		Asurion Japan K.K.	33.3 Mobile insurance agency	
		eGuarantee, Inc.	25.2 Account receivables protection services for general corporations and financial institutions	
		CENTRAL ENGINEERING & CONSTRUCTION Co., Ltd.	50.0 Engineering and ventilation construction	
		CENTURY 21 REAL ESTATE OF JAPAN LTD.	49.7 Headquarters of real estate franchise system	
		POCKETCARD Co., Ltd.	27.0 Credit card business	
		Orient Corporation	22.6 Consumer credit, credit card business	
		Overseas	SOUTH EAST FIBRE EXPORTS PTY. LTD. (Australia)	37.5 Manufacture of woodchip
			THAITECH RUBBER CORPORATION LTD. (Thailand)	33.0 Processing of natural rubber
			YOKOHAMA RUSSIA L.L.C. (Russia)	20.0 Wholesale of tyres
			Unicharm Consumer Products (China) Co., Ltd. (China)	20.0 Production and sales of baby care, feminine care, and other products
			TINGTONG (CAYMAN ISLANDS) HOLDING CORP. (Cayman Islands, British West Indies)	50.0 Comprehensive logistics services in China (3PL, warehousing, trucking, and value-added services)
			United Asia Finance Limited (Hong Kong S.A.R., China)	25.1 Consumer loan business (Hong Kong, China)

■ Associated company changed from subsidiary in the fiscal year ended March 31, 2013

□ Newly consolidated subsidiary in the fiscal year ended March 31, 2013

\*2 On October 1, 2013, the name of ITC NETWORKS CORPORATION will be changed to CONEXIO Corporation.



	Name	Voting Shares (%)	Operations
<b>Headquarters</b>			
Subsidiaries	Overseas		
	ITOCHU FINANCE (EUROPE) PLC (U.K.)	100.0	Financial investments in Europe
	ITOCHU TREASURY CENTRE ASIA PTE. LTD. (Singapore)	100.0	Financial services
	ITOCHU TREASURY CENTRE EUROPE PLC (U.K.)	100.0	Financial services
	ITOCHU Treasury Center Americas Inc. (U.S.A.)	100.0	Financial services

### Headquarters, Overseas Trading Subsidiaries and their Subsidiaries

Subsidiaries	ITOCHU International Inc. (U.S.A.)	100.0	Wholesale and investment
	Master-Halco, Inc. (U.S.A.)	100.0	Manufacture and distribution of fence materials
	ITOCHU Europe PLC (U.K.)	100.0	Wholesale and investment
	ITOCHU Singapore Pte Ltd (Singapore)	100.0	Wholesale and investment
	ITOCHU Korea LTD. (Korea)	100.0	Wholesale and investment
	ITOCHU (Thailand) Ltd. (Thailand)	100.0	Wholesale and investment
	ITOCHU Hong Kong Ltd. (Hong Kong S.A.R., China)	100.0	Wholesale and investment
	ITOCHU Latin America, S.A. (Panama)	100.0	Wholesale and investment
	ITOCHU BRASIL S.A. (Brazil)	100.0	Wholesale and investment
	ITOCHU MIDDLE EAST FZE (U.A.E.)	100.0	Wholesale and investment
	ITOCHU Australia Ltd. (Australia)	100.0	Wholesale and investment
	ITOCHU (China) Holding Co., Ltd. (China)	100.0	Wholesale and investment
	Beijing ITOCHU-Huatang Comprehensive Processing Co., Ltd. (China)	90.0	Reprocessing, sorting, packaging, and shipping of products in the food and living categories
	ITOCHU TAIWAN CORPORATION (Taiwan)	100.0	Wholesale and investment

# Corporate Information / Stock Information

As of March 31, 2013

**Company Name:**

ITOCHU Corporation

**Fiscal Year:**

From April 1 to March 31

**Founded:**

1858

**General Meeting of Shareholders:**

Late June

**Incorporated:**

1949

**Number of Share Trading Unit (*Tangen*):**

100

**Common Stock:**

¥202,241 million

**Transfer Agent of Common Stock:**

Sumitomo Mitsui Trust Bank, Limited

**Tokyo Head Office:**

5-1, Kita-Aoyama 2-chome,  
Minato-ku, Tokyo 107-8077, Japan  
Telephone: 81 (3) 3497-2121

**Stock Listings:**

Tokyo, Osaka\*, Nagoya, Fukuoka, Sapporo

\* The cash-equities markets of the Osaka Securities Exchange were merged into the Tokyo Stock Exchange on July 16, 2013.

**Osaka Head Office:**

1-3, Umeda 3-chome,  
Kita-ku, Osaka 530-8448, Japan  
Telephone: 81 (6) 7638-2121

**Stock Code:**

8001

**Number of Common Stock Issued:**

1,584,889,504

**Offices:** (As of April 1, 2013)

Domestic : 9

Overseas : 115

**Number of Shareholders:**

133,905

**Number of Employees\*:**

Consolidated : 77,513

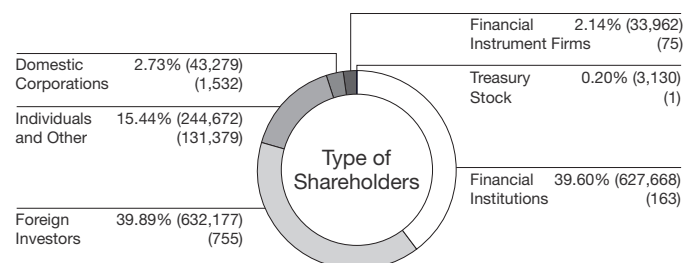
Non-consolidated : 4,219

\* The number of consolidated employees is based on actual working employees excluding temporary staff.

The number of non-consolidated employees includes employees temporarily relocated to other companies (domestic 886, overseas 322) and employees and trainees assigned to overseas posts (340).

**Breakdown of Shareholders:**

% (Number of shares held, 1,000 shares) (Number of shareholders)


**Website:**
<http://www.itochu.co.jp/en/>
**Major Shareholders:**

Name	Number of shares held (1,000 shares)	Share holding ratio (%)
Japan Trustee Services Bank, Ltd. (trust account)	89,859	5.67
The Master Trust Bank of Japan, Ltd. (trust account)	72,747	4.59
Mitsui Sumitomo Insurance Co., Ltd.	37,750	2.38
The Chase Manhattan Bank, N.A. London S.L. Omnibus Account	36,925	2.33
SSBT OD05 OMNIBUS ACCOUNT-TREATY CLIENTS	34,719	2.19
Nippon Life Insurance Company	34,056	2.15
JPMorgan Chase Bank 380055	29,370	1.85
NIPPONKOA Insurance Co., Ltd.	27,556	1.74
Asahi Mutual Life Insurance Company	27,530	1.74
Tokio Marine & Nichido Fire Insurance Co., Ltd.	23,878	1.51

**Forward-Looking Statements**

This Annual Report contains forward-looking statements regarding ITOCHU Corporation's corporate plans, strategies, forecasts, and other statements that are not historical facts. They are based on current expectations, estimates, forecasts and projections about the industries in which ITOCHU Corporation operates. As the expectations, estimates, forecasts and projections are subject to a number of risks, uncertainties and assumptions, including without limitation, changes in economic conditions; fluctuations in currency exchange rates; changes in the competitive environment; the outcome of pending and future litigation; and the continued availability of financing; financial instruments and financial resources, they may cause actual results to differ materially from those presented in such forward-looking statements. ITOCHU Corporation, therefore, wishes to caution that readers should not place undue reliance on forward-looking statements, and, further that ITOCHU Corporation undertakes no obligation to update any forward-looking statements as a result of new information, future events or other developments.