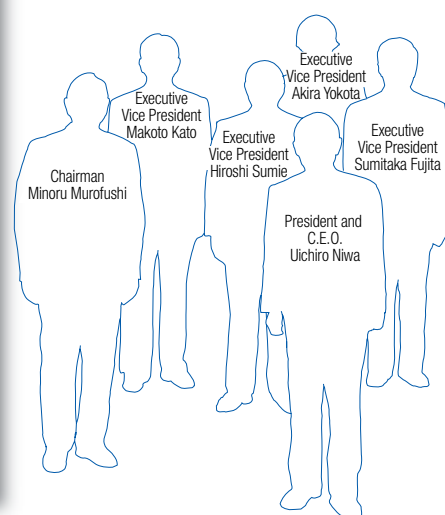


Corporate Officers



Board of Directors

Chairman of The Board, President and C.E.O.

Uichiro Niwa

1962 Joined ITOCHU Corporation
1998 President and C.E.O.

Chairman

Minoru Murofushi

1956 Joined ITOCHU Corporation
1996 Chairman

Executive Vice Presidents

Hiroshi Sumie

President, Energy, Metals & Minerals
Company
1961 Joined ITOCHU Corporation
1997 Executive Vice President

Makoto Kato

President, Textile Company;
Supervisory Officer for Consumer and
Retail-Related
1964 Joined ITOCHU Corporation
2001 Executive Vice President

Sumitaka Fujita

Chief Financial Officer; Chief
Compliance Officer; Supervisory
Officer for Administrative Divisions;
Finance, Accounting, Credit & Human
Resources
1965 Joined ITOCHU Corporation
2001 Executive Vice President

Akira Yokota

President, Plant, Automobile &
Industrial Machinery Company
1967 Joined ITOCHU Corporation
2003 Executive Vice President

Managing Directors

Yoichi Okuda

President, Aerospace, Electronics &
Multimedia Company
1970 Joined ITOCHU Corporation
2003 Managing Director

Hiroshi Ueda

President, Finance, Realty, Insurance
& Logistics Services Company
1967 Joined ITOCHU Corporation
2002 Managing Director

Kouhei Watanabe

President, Food Company
1971 Joined ITOCHU Corporation
2002 Managing Director

Eizo Kobayashi

Corporate Planning, Affiliate
Administration, General Affairs &
Legal; Chief Information Officer
1972 Joined ITOCHU Corporation
2003 Managing Director

Toshihito Tamba

President, Chemicals, Forest Products
& General Merchandise Company
1972 Joined ITOCHU Corporation
2003 Managing Director

Note:
The above biographies are lists of the year of employ-
ment, except corporate auditors from outside, and the
year of the assumption of the current position.

Board of Corporate Auditors

Corporate Auditors

Toshio Konishi

1968 Joined ITOCHU Corporation
2001 Standing Corporate Auditor

Masahiro Asano

1970 Joined ITOCHU Corporation
2001 Standing Corporate Auditor

Tsutomu Miyakushi

1968 Joined ITOCHU Corporation
2003 Standing Corporate Auditor

Katsuhiko Kondo

1996 President, Dai-Ichi Kangyo Bank,
Limited (currently Mizuho Financial Group,
Inc.)
1997 Corporate Advisor
2000 Corporate Auditor, ITOCHU Corporation

Haruo Sakaguchi

1989 Vice Chairman, Japan Federation of Bar
Association
Chairman, Osaka Bar Association
2001 President, Public Bid Monitoring
Committee
2003 Corporate Auditor, ITOCHU Corporation

Executive Officers

Managing Executive Officers

Sokichi Sasaki

General Manager for China; Chairman
& General Manager for ITOCHU
(China) Holding Co., Ltd.

Nobuyoshi Umeno

Deputy Chief Financial Officer; General
Manager, General Accounting Control
Division

Takeshi Tanimura

General Manager of Nagoya Area

Akira Kodera

Executive Vice President, Textile
Company

Jiro Takemori

Executive Vice President, Plant,
Automobile & Industrial Machinery
Company

Hiroyuki Isaka

Executive Vice President, Food
Company; Advisory Officer, Corporate
Communication Division

Shigeki Nishiyama

General Manager, Corporate Planning
& Administration Division

Executive Officers

Satoshi Tanioka

Senior Vice President, Textile
Company (Material Group)

Masayoshi Araya

General Manager for Oceania;
Managing Director & C.E.O., ITOCHU
Australia Ltd.; Managing Director &
C.E.O., ITOCHU New Zealand Ltd.

Tadao Nakamura

Deputy Chief Administrative Officer,
Human Resources & Affiliate
Administration

Tetsuo Mori

General Manager, General Affairs
Division

Akihisa Matsumoto

Executive Vice President, Energy,
Metals & Minerals Company; Chief
Operating Officer, Energy Division

Etsuro Nakanishi

Chief Operating Officer, Textile Division

Masao Kasama

Chief Executive for European
Operation; C.E.O., ITOCHU Europe
PLC.

Kiyoshi Sasaki

General Manager, Finance Division

Toru Ota

General Manager, Secretariat

Shigeru Tsujimura

Chief Operating Officer, Construction
& Realty Division

Ryota Honjo

Chief Executive Representative for
ASEAN & South-West Asia; Chairman
& Managing Director, ITOCHU Hong
Kong Ltd.

Hiroshi Tomita

General Manager, Human Resources
Division

Yoshio Akamatsu

Chief Officer for Asian Region
Strategy; General Manager, China
Market Global Development Office

Masahiro Okafuji

Senior Vice President, Textile
Company (Brand Marketing Group)

Masahiro Nakagawa

Executive Vice President, Aerospace,
Electronics & Multimedia Company

Yosuke Minamitani

Chief Operating Officer, Chemicals
Division

Shigeharu Tanaka

Senior Vice President, Food
Company; Chief Operating Officer,
Food Products Marketing &
Distribution Division No.1

Tsuneharu Takeda

Chief Operating Officer, Kansai District
Operations

Saichi Nakazawa

Assistant, Chief Administrative Officer

Hiroshi Kitamura

President & C.E.O., ITOCHU
International Inc.

Nobuo Kuwayama

Chief Operating Officer, Textile Material
Division

Minoru Akimitsu

General Manager, IT Planning Division

Takanobu Furuta

Chief Operating Officer, Plant &
Project Division

Hiroshi Arai

General Manager of Corporate
Planning & Administration Department,
Energy, Metals & Minerals Company

Yoshihisa Aoki

Senior Vice President, Food
Company; Chief Operating Officer,
Grain & Foodstuff Division No.2

Hiroo Inoue

Chief Operating Officer, IT &
Telecommunication Division

Yoshihisa Suzuki

Chief Operating Officer, Aerospace &
Electronic Systems Division

(As of July 1, 2003)