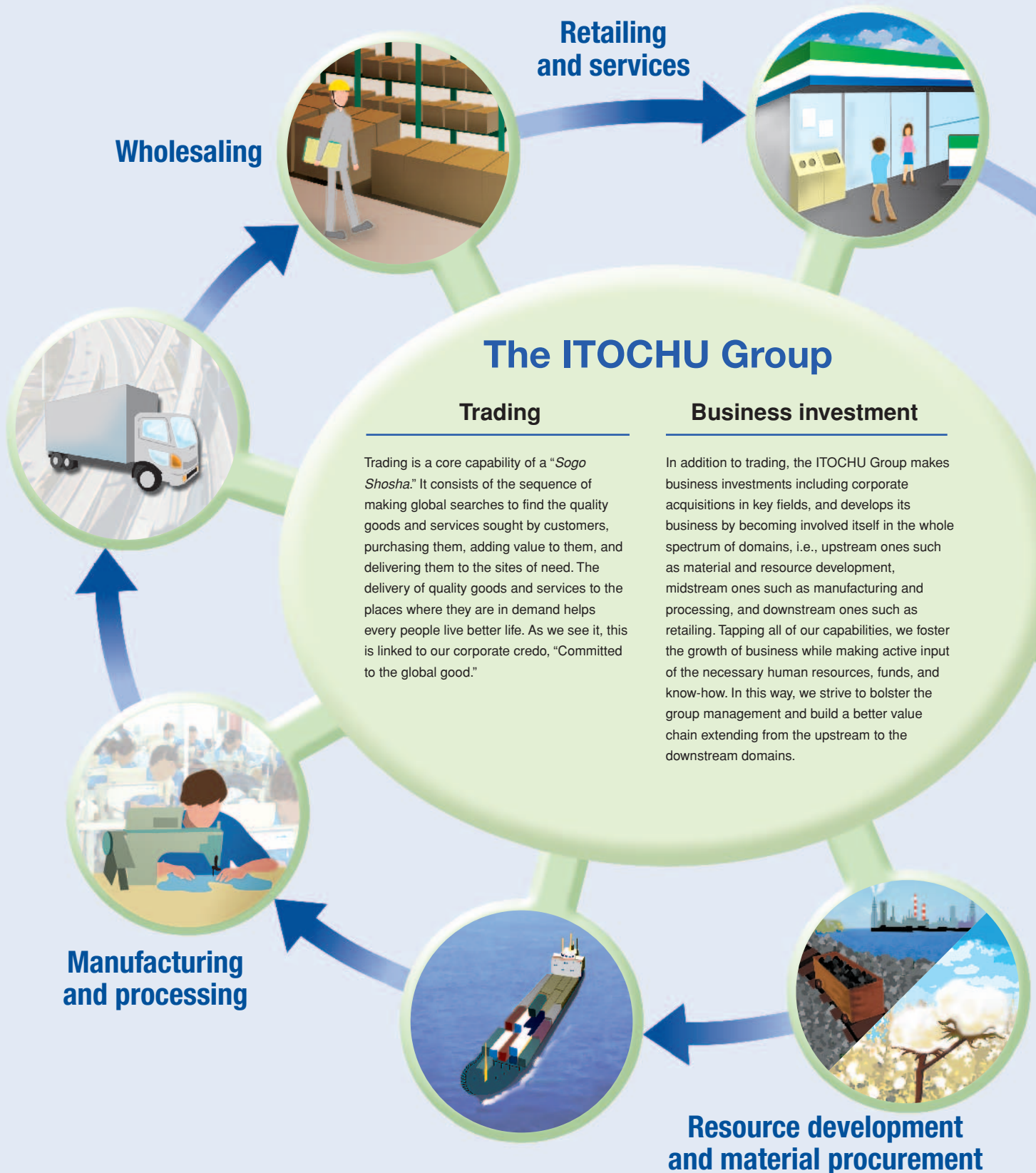


Business Outline of the ITOCHU Group

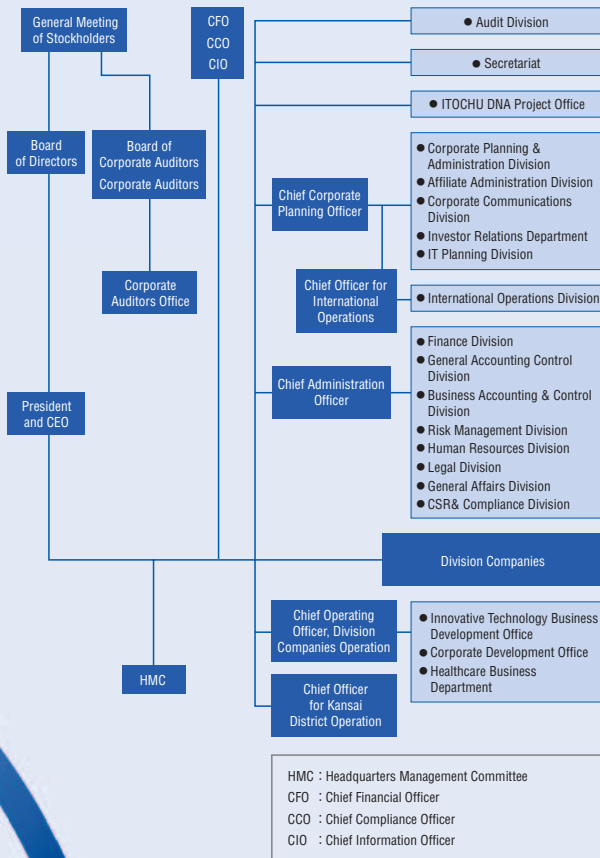
Business outline of the ITOCHU Group

The ITOCHU Group provides a diversity of goods and services that support people's life, and consequently has a total involvement extending from raw materials and other upstream domains to retailing and other downstream ones. We organize trading, business investment, and the related business, thereby adding further value to them. Taking full advantage of these capabilities as a "Sogo Shosha (general trading company)," we are developing business around the world.

We are also set apart by our well-balanced development of business in a wide range of industries and fields (see page 6).



Organization chart



Outline of Division Companies

Textile Company	Major group companies
<p>The Textile Company is developing business with a synergy stretching from procurement of textile materials to apparel as the final products, industrial goods, brands, and advanced technology. It has the biggest brand business of all Japan's "Sogo Shosha." Engaged mainly in trading, it has been expanding its business in upstream and midstream domains in recent years by establishing channels to downstream parties with a focus on apparel and distribution.</p>	<ul style="list-style-type: none"> itochu fashion system co., Ltd. Prominent Apparel Ltd. Roy-ne Co., Ltd. JOI'X Corporation TOMMY HILFIGER JAPAN CORPORATION
Machinery Company	Major group companies
<p>In keeping with its mission of developing local communities and contributing to the international society, the Machinery Company is engaged in improvement and maintenance of the infrastructure overseas as well as in trading and business investment in fields including automobile, ship, construction machinery, and industrial machinery.</p> <p>Concern for the environment is a priority as it develops machinery-related businesses in such fields as water resources, the environment, renewable energy, and alternative energy sources.</p>	<ul style="list-style-type: none"> ITOCHU Plantech Inc. ITOCHU Automobile Corporation ITOCHU SANKI CORPORATION MCL Group Limited ITOCHU Automobile America Inc. Century Leasing System, Inc.
Aerospace, Electronics & Multimedia Company	Major group companies
<p>The Company's IT & Business Solutions Division and Media Business Division are helping to make life more convenient and efficient through business investment mainly in the fields of IT services, contents, and mobile services. Its Aerospace & Electronic Systems Division engages mainly in trading, and is doing business through activities such as sales and leasing of aircraft, and sale of aerospace instruments and security equipment.</p>	<ul style="list-style-type: none"> ITOCHU Aviation Co., Ltd. ITOCHU Techno-Solutions Corporation Excite Japan Co., Ltd. ITC NETWORKS CORPORATION NANO Media Inc. SPACE SHOWER NETWORKS INC.
Energy, Metals & Minerals Company	Major group companies
<p>The Energy, Metals & Minerals Company is operating businesses through synergetic activities in "natural resource development" and "trading". It is engaged in development and stable supply of mineral resources and energy, resource recycling business, and creation of new energy with low environmental impact. It is contributing to the steady supply of mineral resources and energy to Japan and other countries, economic advancement in producing countries, and creation of recycling-oriented societies through resource recycling.</p>	<ul style="list-style-type: none"> ITOCHU Non-Ferrous Materials Co., Ltd. ITOCHU Petroleum Japan Ltd. ITOCHU Minerals & Energy of Australia Pty Ltd ITOCHU Oil Exploration (Azerbaijan) Inc. Marubeni-Itochu Steel Inc. ITOCHU ENEX CO., LTD. i-Recycle Inc.
Chemicals, Forest Products & General Merchandise Company	Major group companies
<p>The Chemicals, Forest Products & General Merchandise Company consists of the Forest Products & General Merchandise Division, which handles lumber, housing materials, paper, pulp, afforestation, natural rubber, tires, glass, cement, and other materials, and the Chemicals Division, which deals in organic and inorganic chemicals, plastics, and other chemical products. Its customers and business range from industries to consumers, and from the upstream to the downstream markets. It is dedicated to making life more safe and convenient for people around the world.</p>	<ul style="list-style-type: none"> ITOCHU Kenzai Corporation ITOCHU Pulp & Paper Corp. ITOCHU CHEMICAL FRONTIER Corporation ITOCHU PLASTICS INC. DAIKEN CORPORATION TAKIRON Co., Ltd. C.I. KASEI Co., Ltd.
Food Company	Major group companies
<p>The Food Company is building a food value chain spanning the sectors of food resource development, production and processing, intermediate distribution, and retailing in Japan and other countries, through the combination of trading and business investment. Its mission is the stable supply of safe foods to protect lives of people.</p>	<ul style="list-style-type: none"> ITOCHU SHOKUJIN Co., Ltd. NIPPON ACCESS, INC. Japan Foods Co., Ltd. Fuji Oil Co., Ltd. YAYOI FOODS CO., LTD.
Finance, Realty, Insurance & Logistics Services Company	Major group companies
<p>The Company's Financial Services Division does business in corporate solutions applying financing methodologies. Besides business in housing, its Construction & Realty Division makes extensive use of real estate funds in the areas of logistics and commercial facilities. Its Insurance Services Division has an agency business in insurance and reinsurance, and is also engaged in underwriting. Its Logistics Services Division handles physical distribution inside and outside the ITOCHU Group, and is also active in China, other Asian countries, and Central and Eastern Europe.</p>	<ul style="list-style-type: none"> ITOCHU Finance Corporation ITOCHU PROPERTY DEVELOPMENT, LTD. ITOCHU URBAN COMMUNITY LTD. CENTURY 21 REAL ESTATE OF JAPAN, LTD. i-LOGISTICS CORP. Orient Corporation

Committed to the global good.