

# Business Outline of the ITOCHU Group

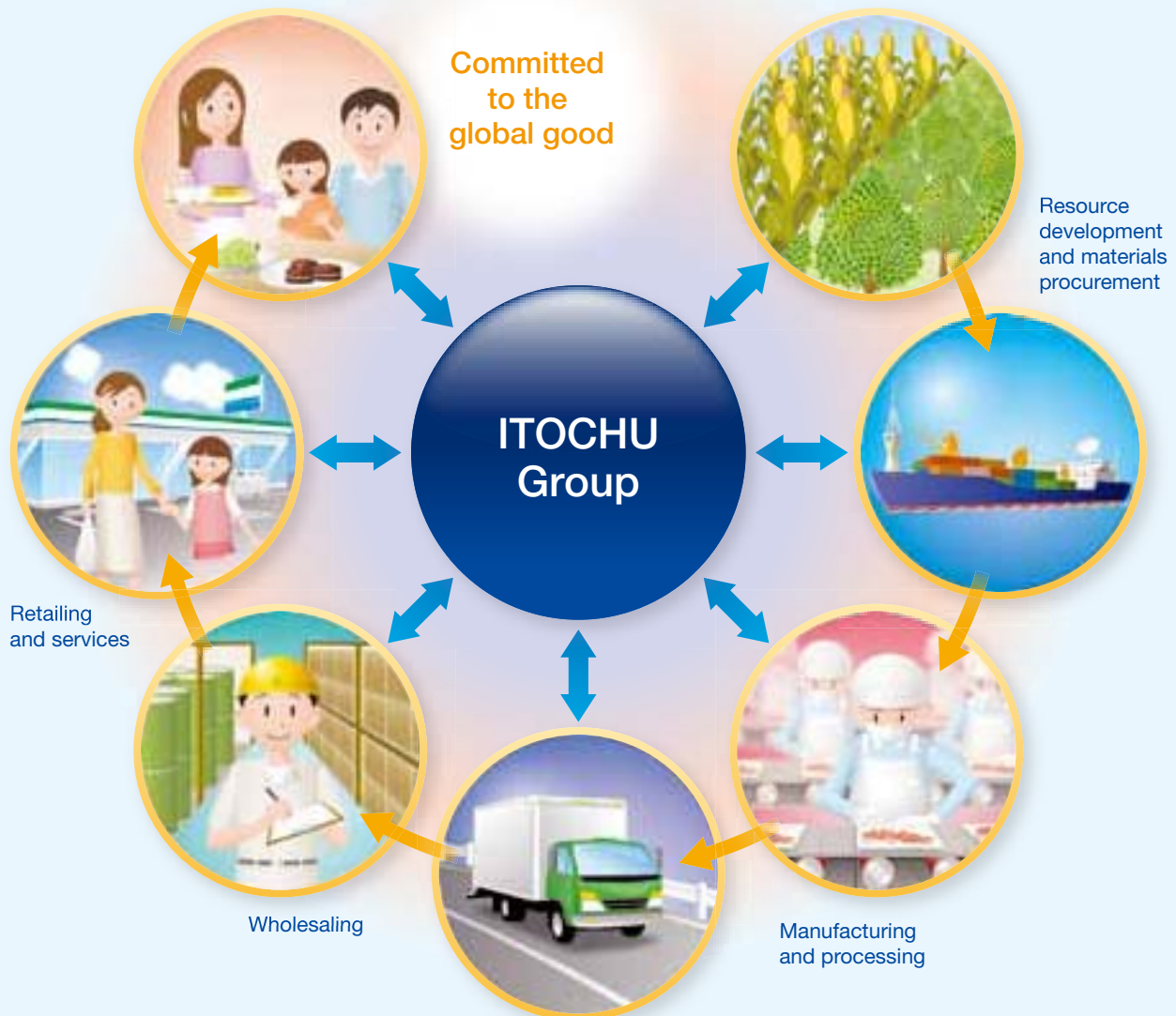
The businesses of the ITOCHU Group comprehensively encompass upstream raw materials business areas through to downstream retail business areas, enabling it to provide a wide variety of goods and services that support people's everyday lives. In order to advance businesses worldwide, we make the fullest use of our capabilities as a *Sogo Shosha*. In other words, we trade, invest in businesses, and add value to these businesses through their overall coordination. Further, a feature of the ITOCHU Group is its well-balanced business portfolio, which covers a broad range of industries and business areas.

## Trading

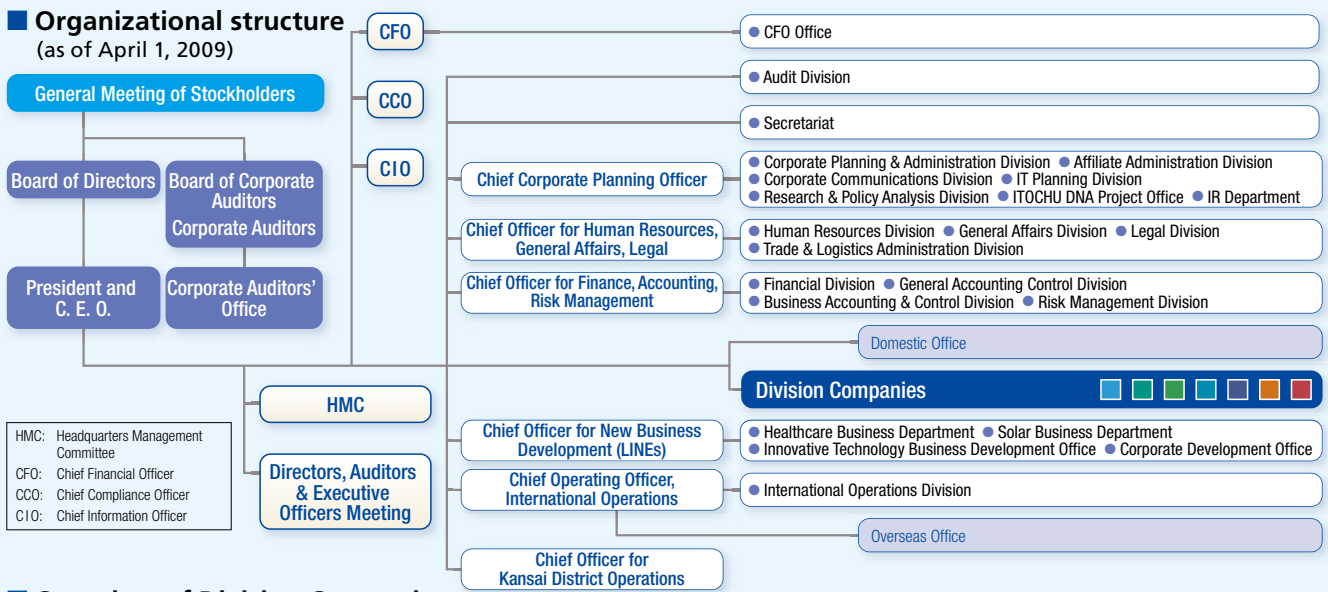
Trading is our core capability. It is to find in-demand, quality goods and services worldwide, purchase them, add value to them, and deliver them to places where they are in demand. Delivering quality goods and services to those who need them helps enrich everyone's life physically and spiritually and realizes our mission *Committed to the global good*.

## Business Investment

As well as trading, the ITOCHU Group develops businesses across a wide area by investing in or acquiring companies in key business areas and participating in their management. Those initiatives include upstream raw materials and natural resources development, midstream manufacturing and processing, and downstream retailing. By drawing on our diverse capabilities and deploying personnel, capital, and expertise to develop businesses, we strengthen group corporate management and build sound value chains linking upstream through to downstream businesses.



## Organizational structure (as of April 1, 2009)



## Overview of Division Companies

ITOCHU Corporation adopts a Division Company system in which each Division Company is responsible for corporate management in its business area. The resulting fast, flexible decision making enables us to operate businesses that cater to demand in a wide range of industries and business areas.

Summary of business	Major products and services	Major group companies	Report page
<p><b>Textile Company</b></p> <p>The Division Company globally develops businesses that range from raw materials to apparel and fashion goods and its activities cover a broad spectrum of consumer-related businesses. While the Textile Company expands brand businesses, which is one of its core businesses, to overseas market, it also promotes further development of advanced technologies and focuses on new sales channels such as television and Internet shopping. By taking on the challenges of creating new business models, the Company aims to gain stable earnings and continuous growth.</p>	Textile raw materials, industrial textiles, textiles, apparel, fashion goods, branded products and services such as apparel, food, and living	<ul style="list-style-type: none"> <li>ITOCHU FASHION SYSTEM Co., Ltd.</li> <li>ROY-NE CO., LTD.</li> <li>JOI'X CORPORATION</li> <li>ITOCHU TEXTILE (CHINA) CO., LTD.</li> <li>Prominent Apparel Ltd.</li> <li>Sankei Co., Ltd.</li> </ul>	P25
<p><b>Machinery Company</b></p> <p>With a mission to contribute to the development of local communities and international society, the Machinery Company develops infrastructure overseas as well as investing in businesses and trading in areas that include automobiles, ships, construction machinery, and industrial machinery. Also, the Division Company develops environment-friendly businesses, including trading in equipment related to water resources, environment and energy conservation, and the development of businesses related to renewable and alternative energy sources.</p>	Gas, oil and petrochemical plants, ships, automobiles, railway rolling stock, power generation equipment, construction machinery, industrial machinery, equipment related to water resources, environment, and energy conservation	<ul style="list-style-type: none"> <li>ITOCHU Plantech Inc.</li> <li>ITOCHU Automobile Corporation</li> <li>ITOCHU CONSTRUCTION MACHINERY CO., LTD.</li> <li>MCL Group Limited</li> <li>ITOCHU Automobile America Inc.</li> <li>Century Tokyo Leasing Corporation</li> </ul>	P27
<p><b>ICT, Aerospace &amp; Electronics Company (former Aerospace, Electronics &amp; Multimedia Company)</b></p> <p>The Division Company contributes to the safety and convenience of society as well as to an improved efficiency through efforts in businesses of a broad scope ranging from IT services, media contents and the mobile business in the ICT &amp; Media Division up to the sales or lease of aircraft, aerospace-related equipment, equipment related to security and electronic systems, as well as the field of industrial machinery in the Aerospace &amp; Industrial Systems Division.</p>	Entertainment and content business, mobile telephone business, IT services and related equipment, computer/information processing equipment and system, e-business, aircraft & aerospace equipment, security and electronic system equipment, industrial machinery	<ul style="list-style-type: none"> <li>ITOCHU Aviation Co., Ltd.</li> <li>ITOCHU Techno-Solutions Corporation</li> <li>Excite Japan Co., Ltd.</li> <li>ITC NETWORKS CORPORATION</li> <li>NANO Media Inc.</li> <li>SPACE SHOWER NETWORKS INC.</li> <li>ITOCHU Sanki Corporation</li> </ul>	P29
<p><b>Energy, Metals &amp; Minerals Company</b></p> <p>Centered on business investment and trading, this Division Company is involved in the development and stable supply of mineral resources and energy, natural resource recycling business, and the development of new energy that minimizes the environmental burden. The Division Company provides stable supplies of mineral resources and energy to Japan and other countries and contributes to the economic development of resource-producing countries and the creation of a recycling society through resource recycling.</p>	Crude oil, petroleum products, LPG, LNG, nuclear fuel, iron ore, coal, aluminum, steel scrap, steel products, DME related products	<ul style="list-style-type: none"> <li>ITOCHU Metals Corporation</li> <li>ITOCHU Minerals &amp; Energy of Australia Pty Ltd</li> <li>ITOCHU Oil Exploration (Azerbaijan) Inc.</li> <li>Marubeni-Itchu Steel Inc.</li> <li>ITOCHU ENEX CO., LTD.</li> </ul>	P31
<p><b>Chemicals, Forest Products &amp; General Merchandise Company</b></p> <p>The Division Company consists of the Forest Products &amp; General Merchandise Division which handles housing materials, pulp and paper, crude rubber, tires and other materials in consumer-related businesses related to "living and consumption," and the Chemicals Division which handles a wide family of products ranging from resource-based raw materials up to medical products and electronic materials. Striving to develop businesses closely tailored to customer needs on a broad basis, from upstream industries through to downstream consumers, this Division Company is also aggressively pushing an expansion into new fields such as medical care, the environment and new energies.</p>	Housing materials, logs and lumber, chips, pulp, paper, crude rubber, tires, ceramic products, shoes, basic chemicals, fine chemicals, medical products, inorganic chemicals, plastics, various consumer products	<ul style="list-style-type: none"> <li>ITOCHU KENZAI CORPORATION</li> <li>ITOCHU PULP &amp; PAPER CORP.</li> <li>ITOCHU CHEMICAL FRONTIER Corporation</li> <li>ITOCHU PLASTICS INC.</li> <li>C.I. KASEI CO., LTD.</li> <li>DAIKEN CORPORATION</li> <li>TAKIRON Co., LTD.</li> </ul>	P33
<p><b>Food Company</b></p> <p>The Division Company combines trading and business investment in Japan and overseas to develop food value chains that extend from food resource development, production, and processing through to intermediate distribution and retailing. The Food Company's mission is to protect people's lives by providing a stable supply of safe food.</p>	Wheat, barley, flour, rice, starch, vegetable oil, soybeans, corn, soybean oil, rapeseed oil, sugar, sweeteners, isomerized sugar syrup, dairy products, coffee, liquor, cacao, fruit juice, beverages, marine products, livestock products, fruit and vegetables, frozen vegetables, frozen seafood, commercial-use ingredients, processed food, confectionery, frozen food, canned food, pet food	<ul style="list-style-type: none"> <li>ITOCHU-SHOKUJIN Co., Ltd.</li> <li>NIPPON ACCESS, INC.</li> <li>Japan Foods Co., Ltd.</li> <li>FUJI OIL CO., LTD.</li> <li>FamilyMart Co., Ltd.</li> <li>YOSHINOYA HOLDINGS</li> <li>Yayoi Foods Co., Ltd.</li> </ul>	P35
<p><b>Finance, Realty, Insurance &amp; Logistics Services Company</b></p> <p>The Financial &amp; Insurance Services Division advances business in the areas of corporate financial solutions, insurance and reinsurance agent businesses, etc. The Construction &amp; Realty Division is engaged in businesses including the development of housing, logistics facilities, commercial facilities, and office facilities that uses real estate securitization methods (real estate funds). The Logistics Services Division is responsible for logistics inside and outside the ITOCHU Group. In particular, the Division is developing integrated logistics value chains overseas.</p>	Foreign exchange, credit card business, fund (securitization) business, insurance agent business and insurance broker business, real estate securitization business, housing-related business, international general logistics	<ul style="list-style-type: none"> <li>ITOCHU Finance Corporation</li> <li>ITOCHU PROPERTY DEVELOPMENT, LTD.</li> <li>ITOCHU Urban Community Ltd.</li> <li>CENTURY 21 REAL ESTATE OF JAPAN LTD.</li> <li>i-LOGISTICS CORP.</li> <li>Orient Corporation</li> </ul>	P37