

# STOCK INFORMATION

As of March 31, 2005

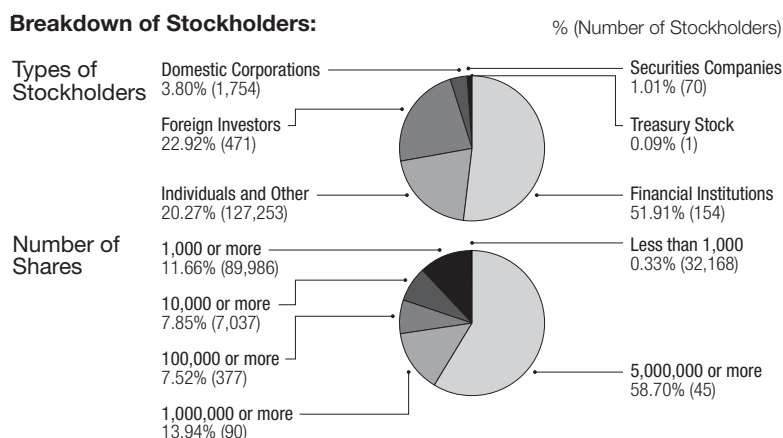
**Transfer Agent of Common Stock:**  
The Chuo Mitsui Trust & Banking Co., Ltd.

**Stock Listings:**  
Tokyo, Osaka, Nagoya, Fukuoka, Sapporo

**General Meeting of Stockholders:**  
June 29, 2005

**Number of Common Stock Issued:**  
1,584,889,504

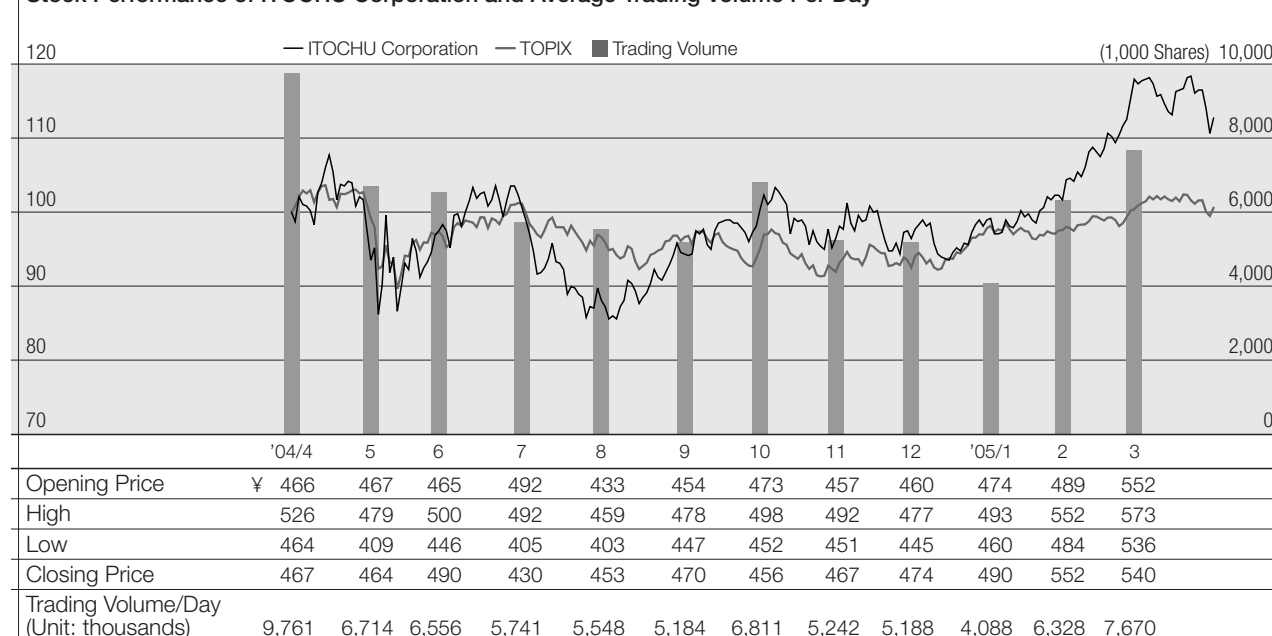
**Number of Stockholders:**  
129,703



**Major Stockholders:**

Stock holders	Number of stocks held (1,000 shares)	Stock holding ratio (%)
Japan Trustee Services Bank, Ltd. (trust account) .....	192,872	12.17
The Master Trust Bank of Japan, Ltd. (trust account) .....	111,641	7.04
Mizuho Corporate Bank, Ltd. ....	49,000	3.09
Mitsui Sumitomo Insurance Co., Ltd. ....	48,651	3.07
Tokio Marine & Nichido Fire Insurance Co., Ltd. ....	42,565	2.69
Nippon Life Insurance Company .....	41,057	2.59
NIPPONKOA Insurance Co., Ltd. ....	39,748	2.51
Asahi Mutual Life Insurance Company .....	27,530	1.74
Japan Trustee Services Bank, Ltd. (trust account 4) .....	26,832	1.69
State Street Bank and Trust Company 505103 .....	24,585	1.55

**Stock Performance of ITOCHU Corporation and Average Trading Volume Per Day**



Share price on April 1, 2004 (¥479) = 100